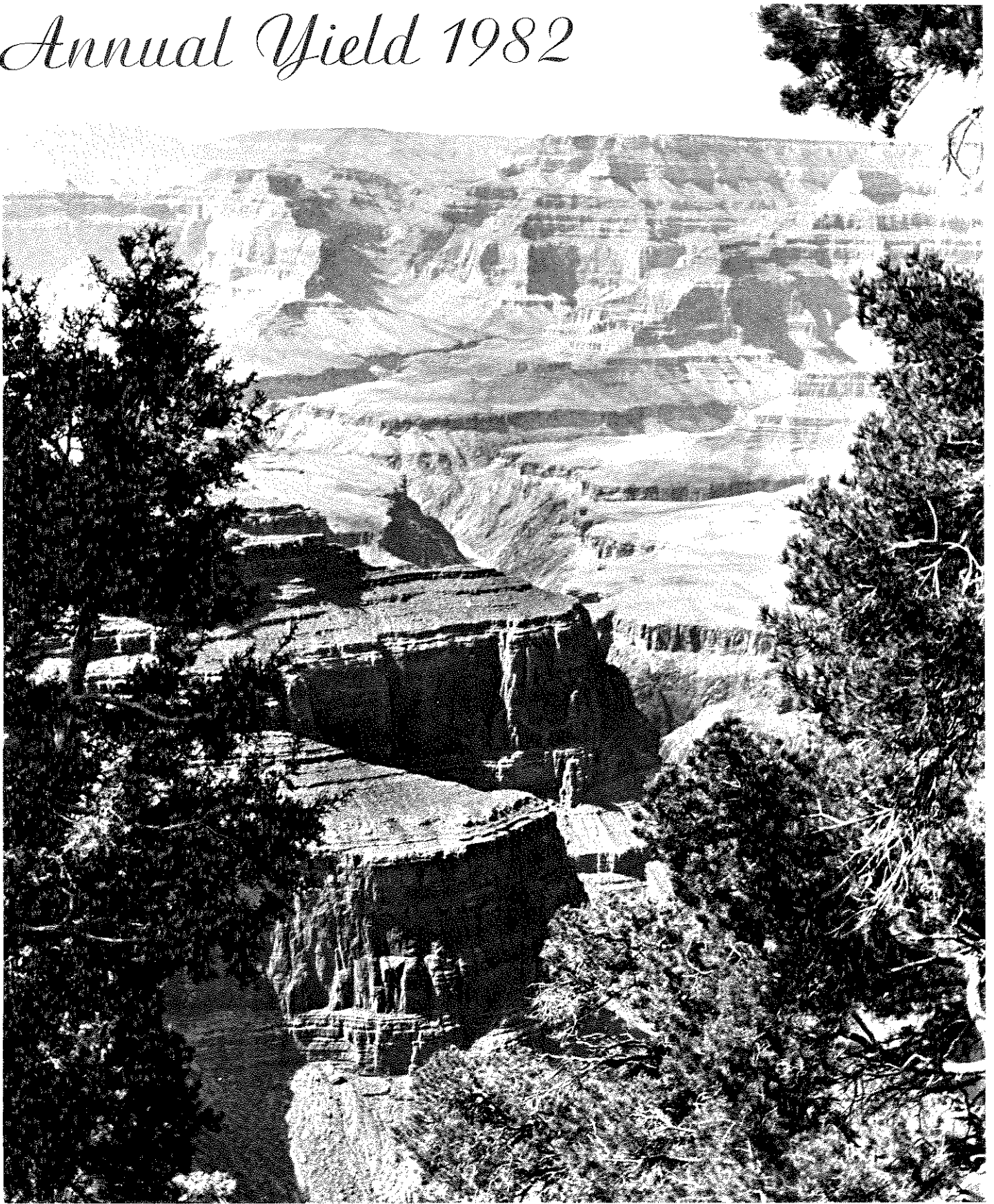


# *Annual Yield 1982*



Northern Arizona University  
SCHOOL OF FORESTRY

*Cover Photo by John Kessler*

*THE MAGNIFICENT GRAND CANYON as viewed looking to the north from Hermit's Rest which was built in 1914 by the Santa Fe Railway Company. It is at the top of a trail that runs from the South Rim to the Colorado River. The trail (Hermit Trail) was built in 1911 for the use of Santa Fe customers to avoid paying the toll on the private Bright Angel Trail owned by the Fred Harvey Company. The trail, rest stop, and a camp in the canyon are named after the "original hermit of the Grand Canyon," Louie Boucher.*



PUBLISHED BY  
NORTHERN ARIZONA UNIVERSITY  
FORESTRY CLUB, STUDENT CHAPTER  
SOCIETY OF AMERICAN FORESTERS

FLAGSTAFF, ARIZONA

1982

# Dedication



The 1982 edition of the "Annual Yield" is dedicated to a knowledgeable and enthusiastic gentleman, Dr. Michael Wagner.

Joining the faculty at NAU in January of 1980, Dr. Wagner has been a dependable, always overflowing cup of knowledge to the students, faculty and community.

He has served as Faculty Advisor to the NAU Forestry Club and has been a vital part of its organization and structure. He has willfully given time and energy towards making our club what it is today.

With a B.S. in Forest Science from the University of Wisconsin, an M.S. and Ph.D. in Entomology from U of W and 2½ years of Peace Corps experience, Dr. Wagner is able to relate his knowledge to the students in a meaningful way.

Mike, we proudly dedicate this edition of the Annual Yield to you.

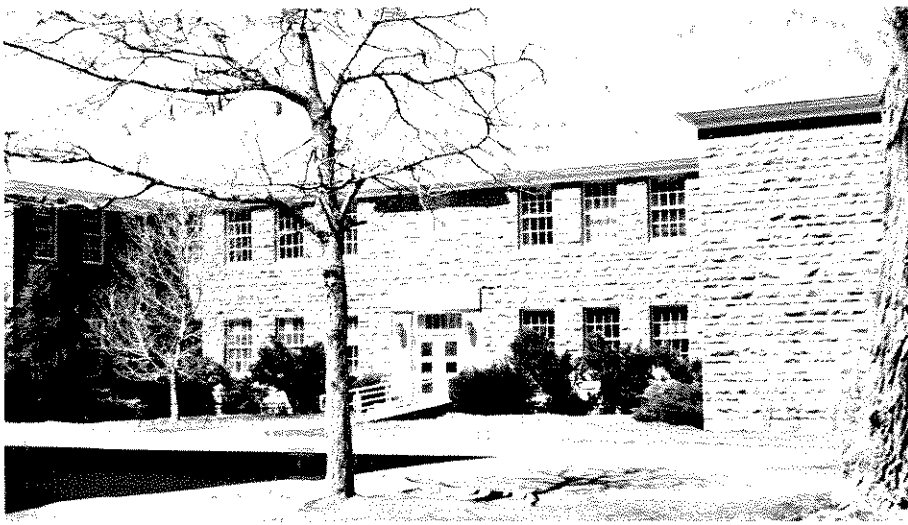
# Dean's Report



We are all excited about this "resurrection" issue of the ANNUAL YIELD. The Forestry Club has indeed sprung back to life these past several years, and we are pleased to see the publication of a yearbook reinstated. The Club has put in a lot of effort--and we hope to see that effort matched by all you alums out there, by keeping in touch, by letting us know where the job opportunities are opening up, by getting back to Flagstaff for Homecoming, and by stopping in for a visit any time you come this way. It really is "Great to be a Lumberjack," and you know you're always welcome.

This is certainly a busy year at your alma mater. The Integrated Program is sailing along in robust good health; Ernie Kurmes and Chuck Minor have done a tremendous job in kicking off the "Silvicultural Certification Program," a three-university (Utah State, Colorado State, and NAU), three-Region (FS Regions 2, 3, and 4) effort which will be an annual affair; and we are looking forward to the SAF reaccreditation visit this spring.

Nobody is twiddling his thumbs much--but we'll always stop everything and visit with a Lumberjack Forester, home for a visit.



## SCHOOL OF FORESTRY

Situated in the midst of the largest continuous stand of ponderosa pine in the United States, Flagstaff is the ideal location for Northern Arizona University's School of Forestry. Accredited by the Society of American Foresters, the school offers professional instruction in the management and utilization of our nation's forest lands and the resources thereon.

The undergraduate program, in particular, is unique in comparison to programs available at other universities in the country in that three semesters of wholly integrated instruction are incorporated into the program during which time the students are advised not to enroll in any other classes. The instruction in this professional part of the program is continuous and uncompartimentalized, involving the entire forestry faculty. Eligibility to apply for admission into this upper division portion of the program depends upon successful completion of two years or the equivalent of prerequisite courses consisting of forestry; the biological, physical and social sciences; mathematics; economics; English and technical writing; and humanities. Admission into the professional program is limited and, consequently, competition is keen.

In the first semester, in the fall of the student's junior year, the technical aspect of forestry is introduced. Students learn the use of forestry tools and techniques and are instructed in such courses as forest and range ecology, protection, measurements, silviculture, fire and plant and wood identification. In the following spring, emphasis is placed upon the management and administration aspect. Courses include case studies in resource management situations, economic principles and management of the timber, range, water, wildlife and recreation resources associated with forest lands. The following fall consists of the preparation of a multiple resources management plan designed to culminate the prior two semester's material and allow each student to apply his knowledge practically. Finally, in the spring semester of the senior year, the student is allowed to pursue directed, elective studies in areas of special interest. In all, 130 semester hours and completion of all the requirements of the curriculum are required in order to earn a Bachelor of Science in Forestry degree.

A graduate program leading to a Master of Science in Forestry degree is also available in such fields of study as forest inventory, forest ecology, forest utilization and recreation. The degree requires completion of 32 semester hours and a thesis valued at 8 semester hours.

The objective of both the undergraduate and graduate programs is to educate and develop the student as an individual, a responsible citizen and a competent professional instilled with an awareness of and an ability to deal with the complexities of contemporary natural resource management.



# MBA

## wood products option



The MBA-Wood Products Option graduate program was developed two years ago through the cooperation of the N.A.U. School of Business and N.A.U. School of Forestry in response to the need for training foresters who aspire to gain additional skills and knowledge in the business activities of the wood products industry. The program normally takes eighteen to twenty-four months to complete. The first year of coursework consists of certain MBA foundation requirements (or undergraduate equivalents) of 21 semester hours before being allowed enrollment in the MBA 600 level courses. During the final year of coursework students are required to complete 33 semester credit hours of courses to include 21 credit hours in the MBA core program and 12 credit hours in the forestry curriculum.

At present ten students are enrolled in this program of which four will be doing their internship requirement and graduating at the end of summer session. For additional information contact Robert E. Larson 523-3031 or 523-4072.



## GERMANY VISITED

Dr. Donald E. Wommack, on the scene at Northern Arizona University since 1966, has just recently returned from sabbatical. He and his wife Anneliese visited Germany in 1981. He hails from Purdue University and Oregon State Univ.

Dr. Wommack relates many gratifying experiences to his trip to Germany. He was able to observe and learn about research projects in API, photogrammetry and several genetics improvement projects. He tells of one project that was centered inside a greenhouse that is 21' tall and about 100' long!

He is sure to comment on the peoples of Germany and their attitudes towards forestry and forest managers. He notes that the district manager (a diploma holder) is in charge of areas averaging 12,000 acres in size and has direct supervision of 6 to 8 reveres (technical foresters). The foresters are held in high esteem by all community members who are very conscientious and in favor of very intensive forest management. These attitudes of Germany's citizens are quite impressive as are the management techniques practiced in the country.

The degree to which multiple use forestry is implemented is something to remember. For example, Dr. Wommack notes that only forester vehicles are allowed on the forest roads. The people are content and happy to park their cars outside the forest and to walk, ski or run into the forest. The peoples of Germany, both educated foresters as well as other citizens, will first talk of conservation, then will talk about the trees and then improving the forests. The German foresters are always striving towards changes that will improve.

Dr. Wommack remarks that the attitudes and traditions of the country have developed in response to past abuses of the lands. Germany's very intensive approach to forest management seems to be dictated by the fact that Germany is 96,000 square miles large and is home to 62 million people. To strike a comparison, Arizona is somewhat larger than Germany at 112,000 square miles and is home to only 2½ million people. From this comparison, one can see where the success and support for intensive German forestry practices originates.

Dr. Donald Wommack thoroughly enjoyed his trip to Germany just as those who talk with him of his experiences enjoy learning from his accounts of Germany's land and people.



# Student Chapter

## Society of American Foresters

Northern Arizona University received this year its first Student Chapter charter in the 24 year history of the School of Forestry.

A unique solution to the problems facing the conflict of Forestry Clubs and Student Chapters was devised at N.A.U. The Student Chapter and Forestry Club will operate as a joint effort similar to the professional Forester and technician relationship in the Society. Both groups will function as one organization in all activities except voting. This gives the Forestry Club and Student Chapter the maximum student resource pool with which to accomplish academic, professional, and social goals.

It is hoped that this joint effort will encourage students to join the Society by becoming actively involved in Society affairs and Student Chapter members will remain active in the Forestry Club to promote leadership and professionalism among fellow students.

The Student Chapter chairman will function as liaison to the Forestry Club executive council and will coordinate SAF student functions with the Forestry Club. The chairman also has the responsibilities of encouraging membership in the chapter and presenting the philosophy of the SAF to students. The other officer in the chapter will be a secretary who will support the efforts of the chairman and carry out the duties of the chairman in his absence.

The Forestry Club in showing its cooperative effort will pay for the chairman's dinner at local chapter meetings.

The Forestry Club, Student Chapter looks forward to many successful years ahead and encourages other schools to develop innovative ways to encourage students membership and involvement in Society affairs.



# Join The Professionals



## Society of American Foresters

5400 Grosvenor Lane, Bethesda, MD 20814  
301-897-8720

Or contact your local SAF representative.

# Faculty & Staff



Charles C. Avery  
Professor of Forestry

BS Utah State Univ. 1961  
Cert. French National  
School of Forest  
And Waters 1962  
MF Duke University 1963  
PhD Univ. of Washington 1972

Forest Hydrology  
Watershed Management  
Environmental Conservation

Richard W. Behan  
Associate Professor of Forestry  
Dean of School of Forestry

BSF Univ. of Montana 1957  
MSF Univ. of Montana 1960  
PhD Univ. of California 1971

Resource Policy





W. Wallace Covington  
Associate Professor of Forestry

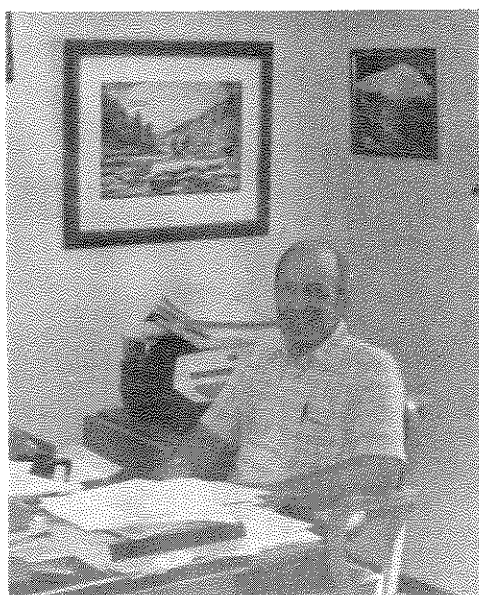
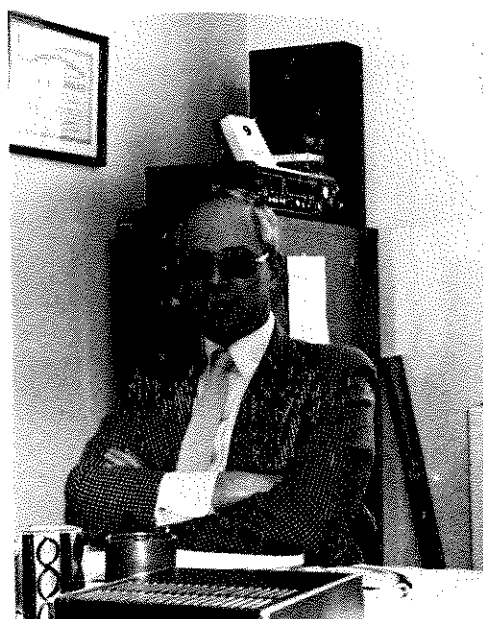
BA	North Texas State Univ.	1969
MS	Univ. of New Mexico	1972
PhD	Yale University	1976

Forest Ecology  
Fire

William A. Groman  
Associate Professor of Forestry

BSF	Penn. State Univ.	1953
MF	Oregon State Univ.	1969
PhD	Oregon State Univ.	1972

Forest Measurements



Ernest A. Kurmes  
Professor

BA	Lehigh Univ.	1953
MS	Yale	1957
MF	Yale	1958
PhD	Yale	1961

Silvics  
Silviculture



Robert E. Larson  
Associate Professor of Forestry

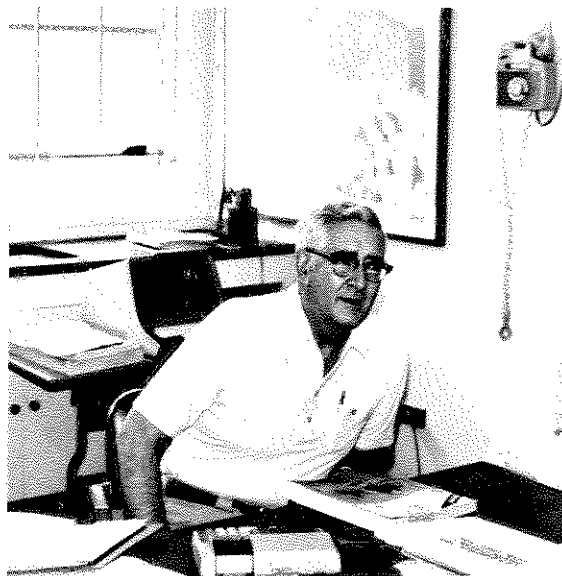
BA	Univ. of Colorado	1966
MA	Univ. of Colorado	1968
PhD	Colorado State Univ.	1976

Wood Technology  
Wood Utility

Charles O. Minor  
Professor of Forestry

BSF	Iowa State Univ.	1941
MF	Duke University	1942
DF	Duke University	1958

Forest Measurements  
Forest Management

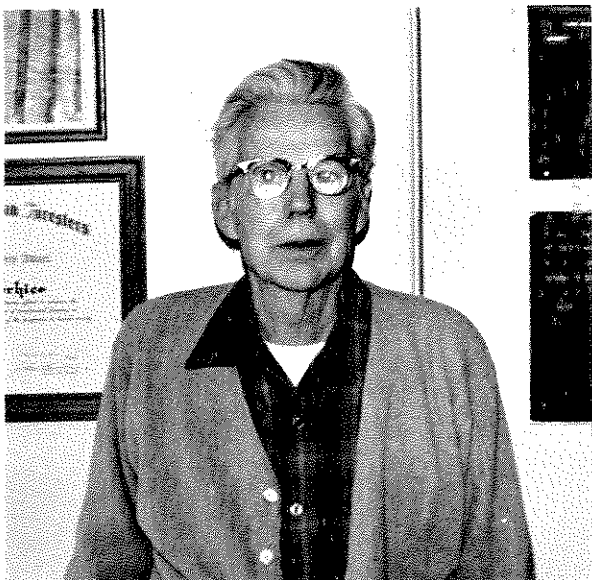


Merton T. Richards  
Assitant Professor of Forestry

BS	Univ. of Montana	1971
MS	Univ. of Arizona	1974
PhD	Univ. of Arizona	1980

Forest Economics and Policy  
Forest Recreation





Glenn Voochries  
Assoc. Professor of Forestry  
(Retired)

BSF	Oregon State College	1929
MS	Oregon State College	1930
FE	Oregon State College	1940

Wood Technology  
Forest Products

Micheal R. Wagner  
Assit. Professor of Forest Protection

BSF	Univ. of Wiscon.- Madison	1972
MS (entomology)	Univ. of Wiscon.- Madison	1977
PhD (entomology)	Univ. of Wiscon.- Madison	1980

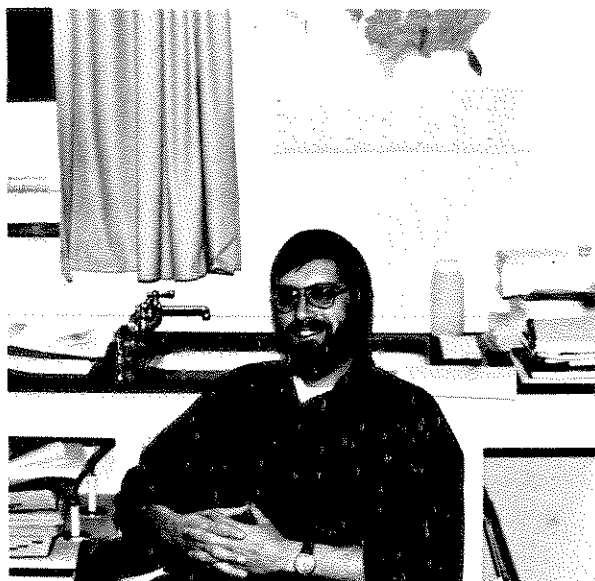
Forest Entomology  
Forest Pathology



Alan S. White  
Assitant Professor of Forestry

BA (Biology)	Williams College	1973
MS	Univ. of Montana	1976
PhD	Univ. of Minnesota	1981

Forest, Range, and Wildlife Ecology





Donald E. Wommack  
Professor of Forestry

BS Purdue Univ. 1953  
MS Oregon State Univ. 1960  
PhD Oregon State Univ. 1964

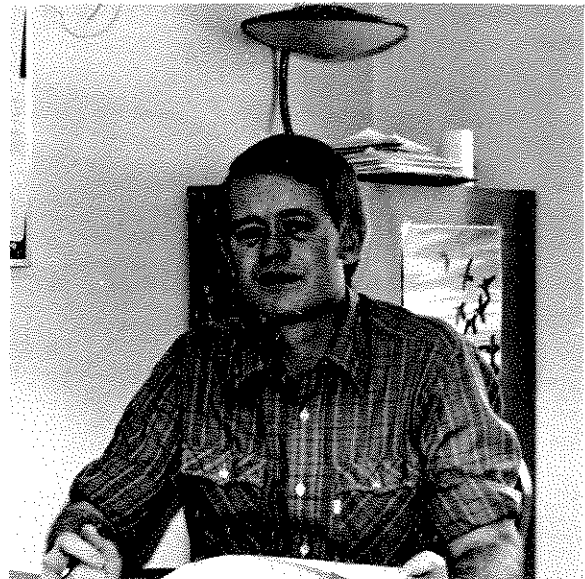
Dendrology  
Logging  
Aerial Photo Interpretation  
Forest Tree Improvement

D. Brent Wood  
Associate Professor of Forestry

D. Brent Wood  
Associate Professor of Forestry

BS University of Utah 1967  
MF Utah State Univ. 1973  
PhD Utah State Univ. 1978

Forest Economics

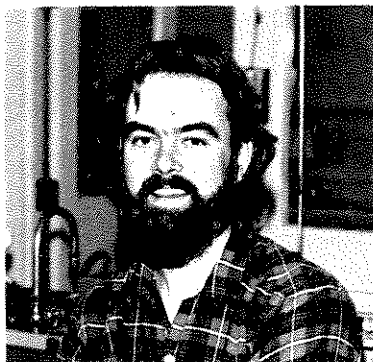


Mrs. McCormick

not pictured:

Bradford Blake  
Tom Huntsberger  
Dale Kirkbride

# Graduate Students



Steven W. Andariese  
from: Phoenix  
undergrad: BS Sociology - Arizona State Univ.  
thesis topic: Effect of prescribed burning on  
forage

James R. Haisley  
from: Yucaipa, California  
undergrad: B.S.F. NAU  
thesis topic: The effects of prescribed burning  
on aspen regeneration.



Kendall K. Miller  
from: Kansas City, MO  
undergrad: B.S.F. Forestry - University of  
Missouri  
thesis topic: The distribution and life history  
of the pandora moth in the Kaibab  
National Forest.

Elizabeth A. Principe  
from: Riverside, California  
undergrad: B.S.F. NAU  
thesis topic: Feeding behavior of western spruce  
budworm in Northern Arizona.





# Seniors



Bill Alexander  
Vancouver, Washington



Gary Allegretto  
Wilmington, Delaware



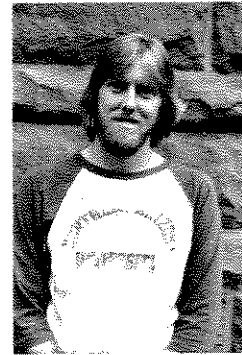
Roger Bethel  
Wilcox, Arizona



Monica Boehning  
Albuquerque, New Mexico



Paul Buckley  
Flagstaff, Arizona



Ed Claussen  
Phoenix, Arizona



J. R. Bintuvtski  
Bottom, Cuervo Bottle



Andy Daniel  
Phoenix, Arizona



Vince DeWitte  
Scottsdale, Arizona



Lisa Drefs  
Scottsdale, Arizona



Melissa Hallstrom  
Scottsdale, Arizona



Kristy Dunkin  
Bridgeport, Connecticut



Tom Elliot  
Green Valley, Arizona



Matt Fredrickson  
Phoenix, Arizona



Kathy Fuller  
Glendale, California



Richard Gallegos  
Chama, New Mexico



Monty Hazlehurst  
Flagstaff, Arizona



Larry Hettinger  
Phoenix, Arizona



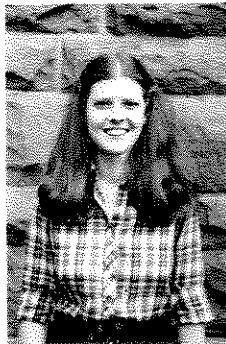
Darryl Huff  
Phoenix, Arizona



Steve Humble  
Flagstaff, Arizona



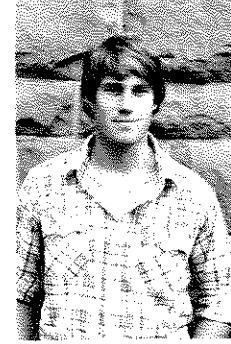
Peter Jagow  
Sun City, Arizona



Sue Johnson  
Phoenix, Arizona



John Kessler  
Phoenix, Arizona



Walt Leach  
San Pablo, California



Sydney Matteson  
Tucson, Arizona



Neil McCusker  
Casa Grande, Arizona



Charlotte Minor  
Flagstaff, Arizona



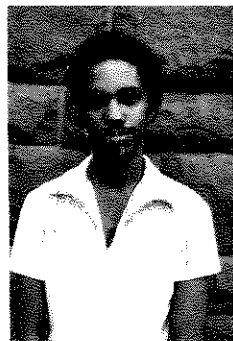
Charles Murphy  
Farmington, New Mexico



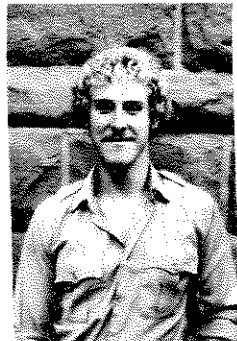
Mark Pirtle  
Phoenix, Arizona



Dan Pitterle  
Apache Junction, Arizona



Corvin Robinson  
Sierra Vista, Arizona



Ralph Schroeder  
Mesa, Arizona



Neal Schrauf  
Stanford, Connecticut



Bob Skaggs  
Arizona



Wade Spang  
Phoenix, Arizona



Lupita Subia  
Alamagordo, New Mexico



Bob Weih  
Winsted, Connecticut



Linda Weldon  
Alamosa, Colorado



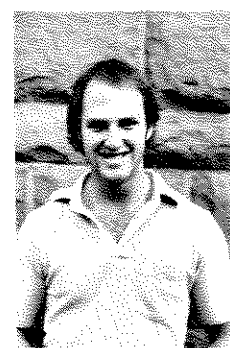
Richard Wells  
Tucson, Arizona



Wendy Welt  
Scottsdale, Arizona



Rick Wessler  
Cincinnati, Ohio



John Whitney  
Tucson, Arizona



Gorman Yazzie  
Navajo, New Mexico



Kathryn Yocky  
Phoenix, Arizona

# Juniors

## CREW 1

Thomas J. Bradley  
Chuck Bullington  
Denise Byers  
Daniel L. Ashbrook  
Mark D. Afforde  
Tim Branson (not pictured)



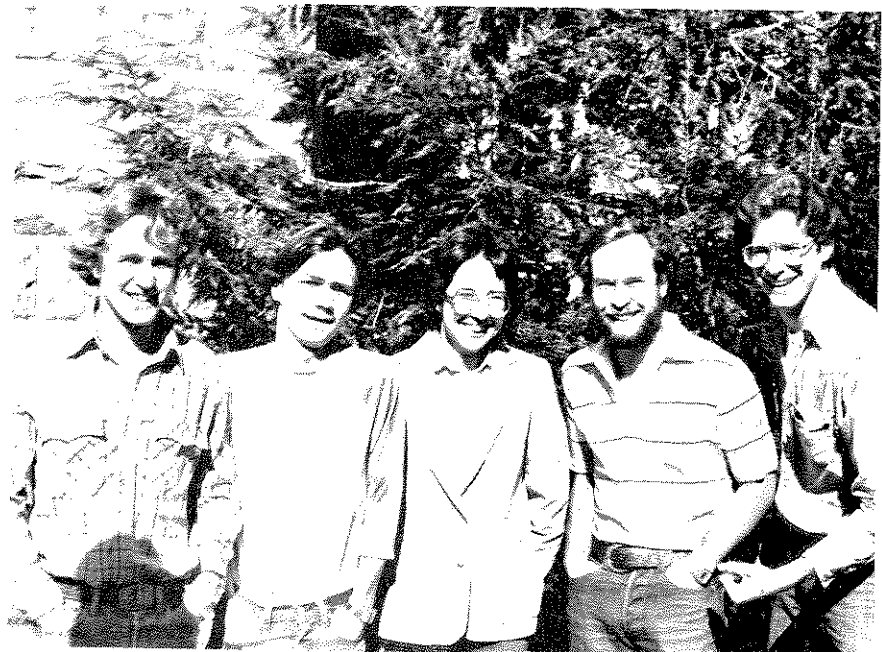
## CREW 2

Steve Carroll  
Jackie Craig  
Steve Colbert  
Kevin Cannon  
John Clancy



### CREW 3

Doug Epperly  
Brenda Deatherage  
Katherine Elliott  
Mark Fritz  
Don Geesling  
Bill Dunning (not pictured)



### CREW 4

Alan Henceroth  
Herb Hyland  
Cassi Hohanshelt  
D. Lowell Kendall  
Adam Korobkin



## CREW 5

Marty Luckert  
Martin K. Luckert  
Andy Nettell  
Keith Pajkos  
Bill Pool  
Blair McCloskey  
Steve Loy  
Mary Frances Mahalovich



## CREW 6

Philip H. Stott  
Jim Smith  
Bill Porter  
Craig Thies  
Mary Reinoehl  
Kay Threlkeld

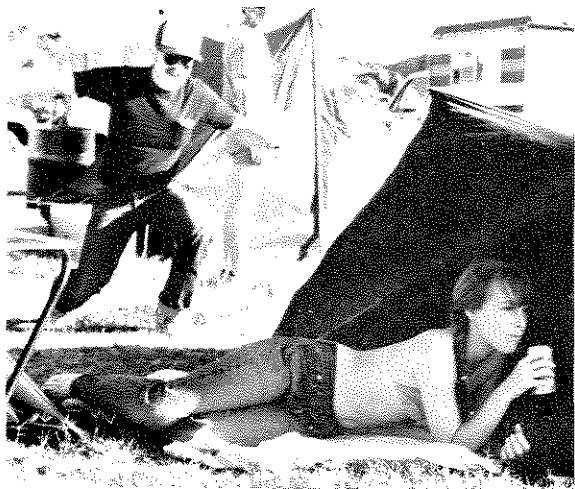
## CREW 7

Jim Ulrey  
Scott Wilber  
Jim Youtz  
Kim Wiseman  
Jeff Witham  
Scott Wightman



## LOST IN THE WOODS

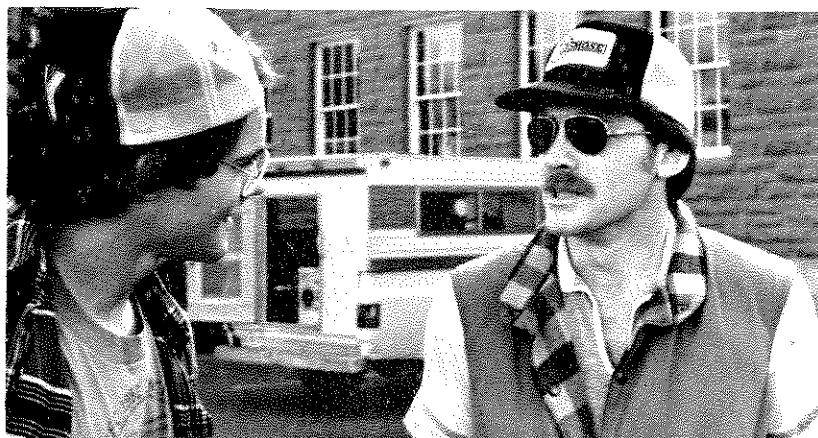
Margaret Bailey  
Claire Dailey



**WHITE WOMAN!!**



**I WISH I WAS FISHING.**



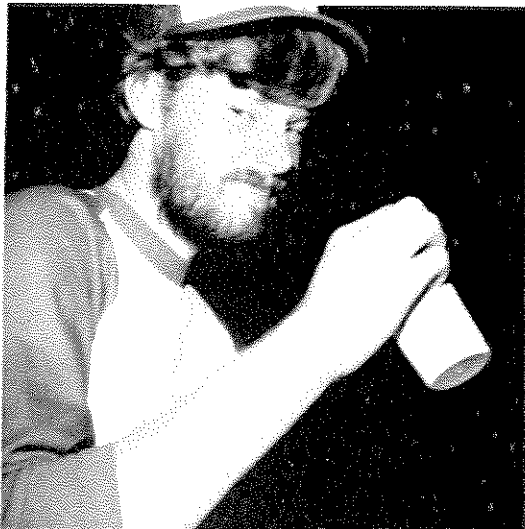
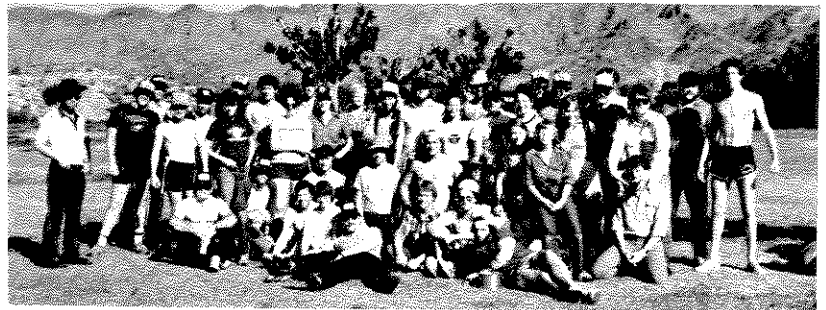
**...AND TOM ABOUT THAT FIRST NIGHT**



**ROAD TRIP ON THE BIG BUS.**



**NEXT?!**



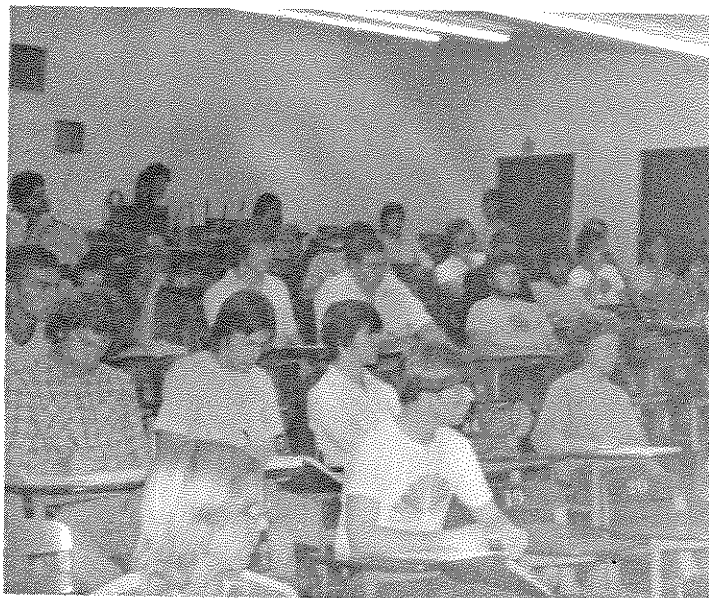


# Sophomores

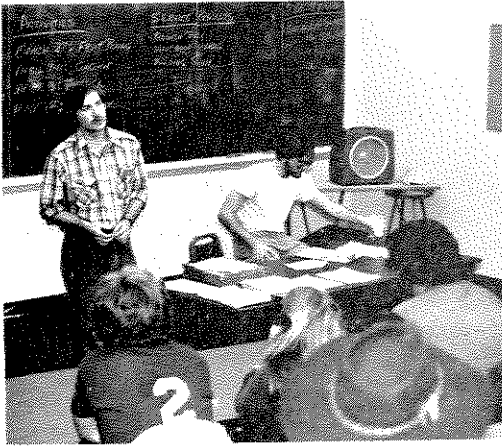


SOPHOMORE CLASS NOT AVAILABLE AT PRESS TIME

# Freshman



# Forestry Club



What's wrong with this picture?

I think we should abscond with the funds.



Another exciting meeting.



WHEN THE FALCON SPEAKS... PEOPLE LISTEN !



Tom, you're a foul ball!

# President's Ramblings

The purpose of the Forestry Club is to promote the professional, academic, and social activities of our members. As we close out the 1981-82 academic year, it is time to reflect upon the past and ask ourselves if we served the purpose of the club.

To promote the professional activities of our members we have affiliated our club with the Society of American Foresters. Many of our members have asked what the S.A.F. affiliation can do for us. The answer is simple and can best be said in one word -- opportunity. Working jointly with a student chapter we have accessed ourselves to a wealth of information not previously obtainable. We have extended our branches to reach into new areas that in the past were unheard of. The doors have been opened and now is the time to take full advantage of the future. Our members can truly say they belong to a professional club.

But remember, professionalism can not be obtained by membership alone, it can not be granted with a degree, and it can not be conferred upon the individual. Professionalism requires competence, organization, an ethical base, and a collective and individual discipline. You can try out your ability as a professional, however, by serving on the executive council or being on committees. The excellent individuals who have served so well over the last year on the executive council have gained invaluable knowledge in the art of management. Knowledge that can not be obtained in the course curriculum, but only through the Forestry Club. These individuals and the members of the club are the ones who gain the ultimate respect and stature that accompanies professionalism. They are the ones whose performance and conduct as individuals will always measure up in this profession.

We have met our academic responsibilities by continuing our guest speaker format at club meetings. Through each speaker or program we have enhanced the knowledge of our members. New insights into forestry and related professions have been given, and our members have capitalized on these opportunities by being better qualified for jobs and by extending their career opportunities.

Our social activities have been a lot of fun this year. They have given our membership opportunities to know one another better and have created the bonds of friendship between previous strangers. From our first get-to-know picnic to the appearance of "Glenditsia Man" at Halloween, through Christmas, potluck, and field day, our common bonds as club members and friends have continued to be strengthened.

Finally, above and beyond our constitution responsibilities we have provided services to our school and community. The Club has refinished the Forestry room table into an exquisite conference table that both faculty and students are proud to use. We have helped clean the city on Civic Beauty Day and co-sponsored the 9th annual All Indian Men's Basketball tournament to benefit social services for American Indians. In addition, we are currently developing 4-H and Scouting programs as on-going education programs to the community. Finally, we are serving the needs of the U.S. Forest Service as volunteers by manning public information booths. The future brings us the 1983 A.W.F.C. Conclave as the host school, more projects to benefit the School of Forestry, and more service to the community.



The key to the future lies with the commitment of our students to the Forestry profession. Will they be able to balance their academic commitments with those of the Club? Will they be able to see beyond academic excellence as the sole key to the future and make full use of all the opportunities available? In the final analysis it comes down to not whether you have the brains to succeed, but rather do you have the intestinal fortitude and determination necessary for success?

I hope the Senior class will break from the past tradition of absenteeism during Semester C and show how they can change the future by giving leadership to the Club. For the Junior class I hope they will capitalize on every opportunity and continue as the nucleus of Club strength. I hope the Freshmen and Sophomores will always use the Club to better understand the Forestry profession. Finally, I hope everyone will always give that extra 10 percent to make things better!

*Jim Smith*

## FALL OFFICERS

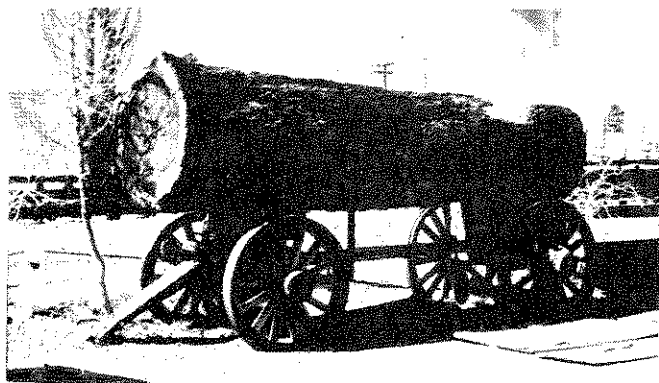
PRESIDENT: Jeff Witham  
VICE-PRESIDENT: Chuck Bullington  
SECRETARY: Kim Wiseman  
TREASURER: Craig Thies  
SOCIAL MANAGER: Jackie Craig  
SERGEANT AT ARMS: Mark Torrey

RECORDER-HISTORIAN: Doug Epperly  
SENIOR REPRESENTATIVE: Melissa Halstrom  
JUNIOR REPRESENTATIVE: Alan Hanceroth  
SOPHOMORE REPRESENTATIVE: Alene Nitzsky  
FRESHMAN REPRESENTATIVE: Kathy Vinci  
FACULTY ADVISOR: Dr. Mike Wagner

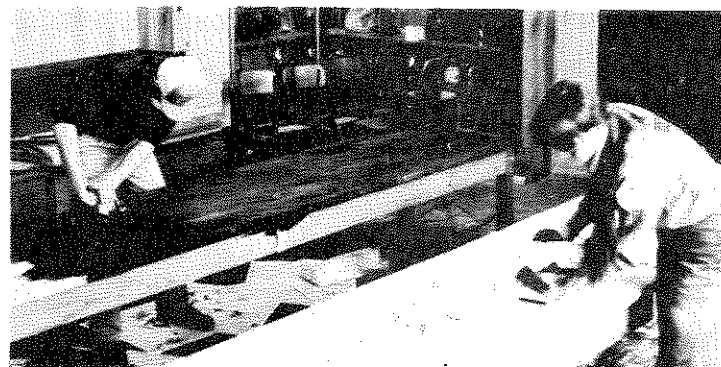
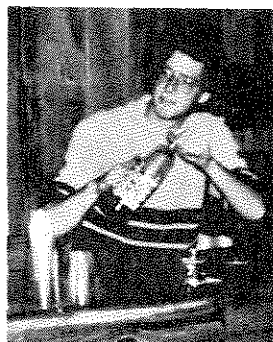
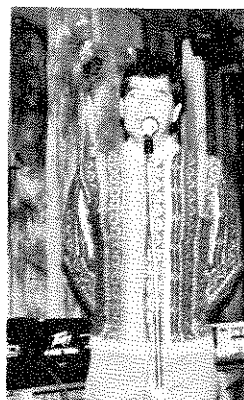


## SPRING OFFICERS

PRESIDENT: Jim Smith  
VICE-PRESIDENT: Steve Colbert  
SECRETARY: Kim Wiseman  
TREASURER: Craig Thies  
SERGEANT AT ARMS: Scott Wilber  
SOCIAL MANAGER: Jackie Craig  
RECORDER-HIST.: Doug Epperly  
SENIOR REP.: Gary Allegretto  
JUNIOR REP.: Chuck Bullington  
SOPH. REP.: Susan Dietrich  
FRESHMAN REP.: Charmaine Goushaw  
FACULTY ADVISOR: Dr. Alan White



# FORESTRY TRIBE HALL

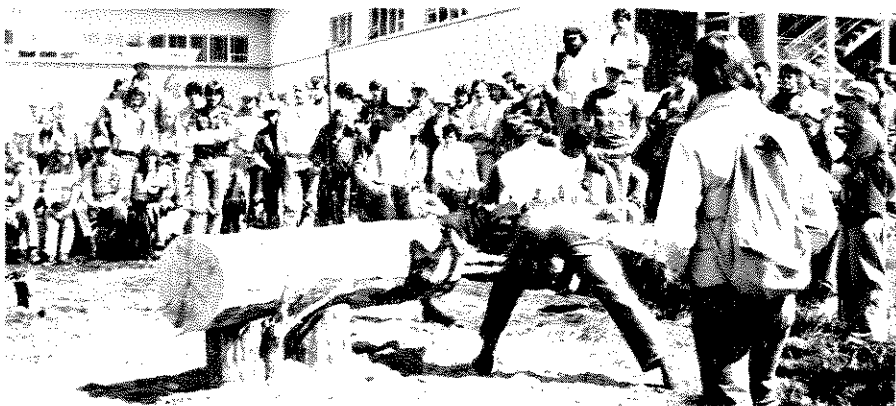
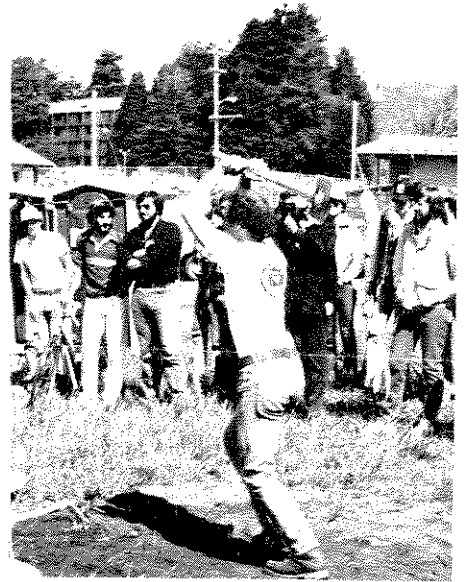


# A.W.F.C. Conclave

## HUMBOLDT STATE UNIVERSITY

During the second week in April, 11 Forestry Club members traveled to Arcata, California, the 1982 Association of Western Forestry Clubs Conclave, hosted by Humboldt State University and College of the Redwoods. The conclave provided an opportunity for the Club to become active in the AWFC again and show everyone that Arizona does have trees.

1983 HOST:  
NORTHERN ARIZONA  
UNIVERSITY



# Parties

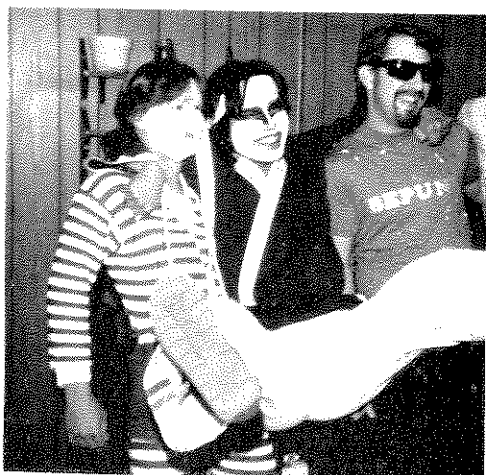
## HALLOWEEN



Women in forestry.



Come over to my place boys.



Who let these guys in?

## CHRISTMAS



Wanna see my other tatoo?



Again?



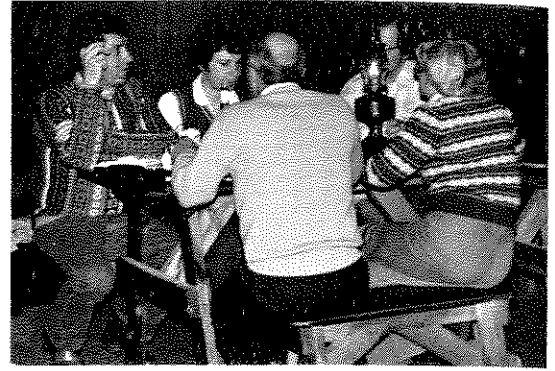
Come on Mary, kiss me.



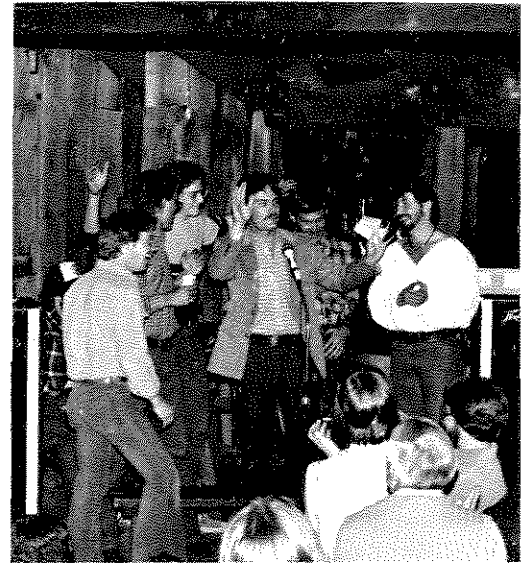
# Potluck



Hey Steve, how do you keep from spitting in the wrong can?



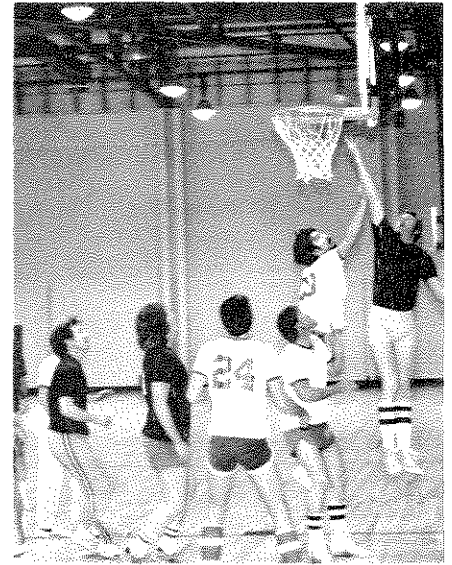
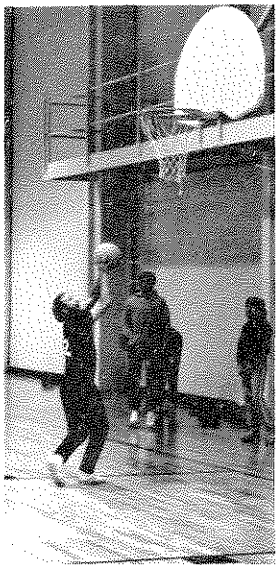
Hey! Hold it down over there.

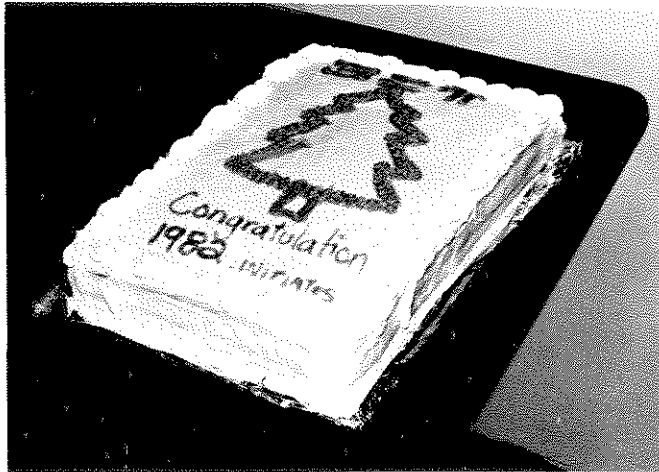
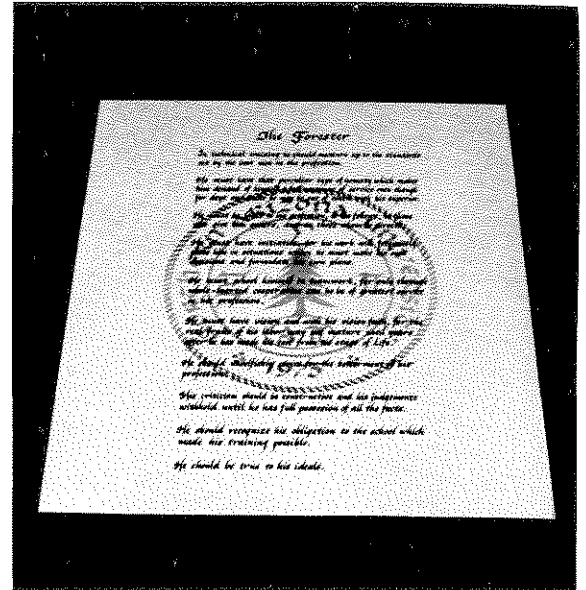


STO-PI CHOIR - one and only appearance.

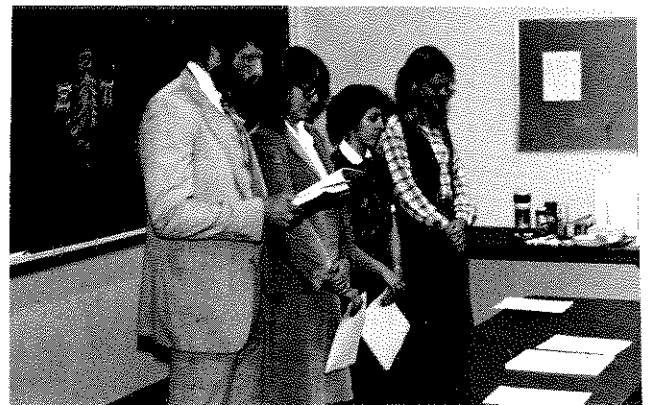


# Intramurals





# Xi Sigma Pi





# Alumni

LEE T. ALFORD, 1531 Military Rd., Bogalusa, LA 70427. Lee is married and has 3 children. He has worked for Crown Zellerbach for 11 years, and presently holds the position of Manager Strategic Planning and Business Services.

JAMES ARTHUR, 4710 Larch Ln., Missoula, MT 59801. James is married and has 2 children. For 12 years he's worked for the U.S.F.S. and holds the position of Assistant Director, Personnel Mgt.

RALPH L. BARELA, P.O. Box 295, Mora, NM 87732. Ralph is married and has 2 children. His employment is consultant and self-employed, and he is presently in the position as forester for Barela Timber Mgmt. Co.

THOMAS W. BEDDOW, P.O. Box 68, Mayhill, NM 88339. Thomas is married and has 2 children. He's worked for the U.S.F.S. for 9 years and is presently in the position of forester.

DENNIS J. BIEKER, P.O. Box 238, Bernalillo, NM 87004. Dennis is married and has 2 children. He is presently a company forester for the Bates Lumber Co.

LARRY BLACKMAN, Star Rt. 1 Box 265, Oak Run, CA 96069. Larry is married with no children. He's worked for the California Dept. of Forestry for 7 years and presently holds the position of area Forester.

PAUL R. BROYLES, P.O. Box 27, Mesa Verde Nat'l Park, CO 81330. Paul is married and has 2 children. He's worked for the National Park Service for 8 years and is a Resource Mgt. Specialist.

RICK D. CABLES, P.O. Box 1304, Clifton, AZ 85533. Rick is married and has 2 children. He's worked for the U.S.F.S. for 5 years and holds the position of Rec. and Lands Staff.

GEORGE J. DUDA, P.O. Box 567, Livingston, TX 77351. George is married and has no children. He has been working for Duke City LBR Co. for 13 years and holds the position of Resident Forester.

DOUGLAS DVORMAN, P.O. Box 2172, Silsbee, TX 77856. Doug graduated in 1973 and is currently obtaining a MBA. He is employed with Kirby Forest Industries as a Supervisor in Landowner Assistance.

KELLY FIKE, 5909 Pony Express Trail, Pollock Pines, CA 95726. Kelly is a Sales Preparation Forester in the Forest Service. He graduated in 1975, is married and has one child.

JAMES H. FREEMAN, 1713 Callejon Zenaida, Santa Fe, NM 87501. James is married and has 3 children; Eric 13, Jeff 10, and Crissy 1-½. He graduated in 1972 and is a Conservation Enforcement and Education Section Chief with the New Mexico State Forestry.

FRED A. FUCHS, P.O. Box 1844, Albuquerque, NM 87103. Fred is not presently married and has 2 children. He is presently working for the U.S.F.S. and holds the position of Regional Aviation Officer.

ROSS W. GORTE, 5616 N. 5th St., Arlington, VA 22205. Married, with no children, Ross graduated in 1975, obtained a MBA in 1976 and a Ph.D. in 1981 at Michigan State. He is a Forest Economist in the Forest Industry Trade Association.

PATRICK LEE HARRISON, Box 402, Thayne, WY 83127. He is a 1972 graduate, is married and has one child. Presently, Patrick is a Forester, specializing in Timber and Minerals Management with the Bridger-Teton N.F., Greys River District.

WILLIAM ROGER HART, 107 S. 5th St., Williams, AZ 86046. William is married with no children. He graduated in 1975 and spent 2-½ years in the Peace Corps. Currently he is a Pre-sale Forester with the Forest Service.

LYNNE EBEL HERSHBERGER, Box 334, Burton, OH 44021. Lynne is married and has a 2 year old daughter and a baby due in Dec. She graduated in 1976 and is President of Custom Forest Services which specializes in Timber Management.

EARL L. KEARNS, P.O. Box 68, Happy Jack, AZ 86024. Earl, a 1973 graduate, is married and has 3 children. He is the District Ranger - Wildlife Staff and has been employed with the Forest Service for 7 years.

FREDERIC R. LARSON, Forestry Sciences Lab., 2221 E. Northern Lights, Suite 106, Anchorage, AK 99508. Frederic is married and has one child. He has been working for the U.S.D.A. Forest Service for 16 years, and holds the position of Principal Mensurationist.

DAVID B. LEMAY, 6126 Coventry Lane, Cambria, CA 96097, c/o Ca. Dept. of Forestry. David graduated in 1975, is married and has two sons Greg 5 and Mathew 4. David is a State Forest Ranger 1 and has been in the State Dept. for 6 years. He is in the progress of obtaining an MSF.

BRUCE R. MAIN, P.O. Box 485, McArthur, CA 96056. Bruce is married and says that he has one child and one more on the way. Bruce is President and General Manager of his own company, Big Valley Lumber Co.

JAMES LEIGH MATSON, 1012 E. Laguna Dr., Tempe, AZ 85282. James is presently married and has 2 children. He is presently working for Kaibab Industries and holds the position of Resource Manager.

ELWOOD L. MILLER, 1000 Valley Road, Reno, NV 89512. Elwood is married and has 2 children. He presently works for the Univ. Nev. Reno as an Assoc. Professor.

MICHAEL MILNE, 1514 N. San Francisco, Flagstaff, AZ 86001. Michael is married and has no children. He presently works for the Az. State Land Dept. and holds the position of Northern Unit Supervisor--Hydrology Sec.

BLAIR E. MOODY, 480 Lake Mary Road #15, Flagstaff, AZ 86001. Blair is a 1975 graduate of NAU and is a Pulpwood, Logging Supervisor for Southwest Forest Industries. Blair is married and has no children.

PHILIP V. PETERSON, 5400 Grosvenor Lane, Bethesda, MD 20814. Philip is married and has 2 children. Philip is Director of Information for the Society of American Foresters.

CARY J. PRICE, 920 W. Sheridan, Williams, AZ 86046. Cary is married and has 2 children. He has been working for the U.S.F.S. for 17 years and presently holds the position of Supervisory Forester Rec. and Lands.

MICHAEL F. REUBEN, RD.1 Box 50, Narrowsburg, NY 12764. Michael is married and has one child. He has worked for the National Park Service for 6 years and presently holds the position of District Ranger.

MIKE RYAN, 147 N. Celilo, Flagstaff, AZ 86001. Mike is not married. He has worked for the Forest Service Research for 2 years, and presently holds the position of statistician.

STEVEN A. SADER, 9042 W. Washburn Pl., Lakewood, CO 80227. Steven is married and has 2 children. He presently works as an applications Scientist (forestry), for Technicolor Graphic Services, Inc.

STANLEY R. SAMUELS, Box 122, Angel Fire, NM 87710. Stanley is married and has 2 children. He currently owns three companies: Samuels Logging Co., Primgro Properties Development Corp. and North Country Real Estate.

Donald J. Scantling, Rt. 1 Box 47-B, Horseshoe Bend, ID 83629. Donald is married and has 2 children. He has been working for Boise Cascade Corp. for 7 years and holds the position of Employee Relations Coordinator.

Robert H. Shuker, 1365 Jean, Relands CA 92373. Robert is married with no children. He graduated from N.A.U. in 1976 and now works for the USFS as a Dispersal and Wilderness Area Supervisor.

Milton Carl Stahmer Jr., P.O. Box 571, Eagar, AZ 85925. Milton is married and has no children. He's worked for Southwest Forest Industries for 1½ years and presently holds the position of Dry Kiln Foreman.

Paul A. Summerfelt, 2105 Morningside, Canon City, CO 81212. Paul graduated in 1976, is married and has no children. Currently Paul is an Assistant District Forester Project Forester and it is interesting to note that he feels the intergrated program at N.A.U. has been an advantage to him.

Steve Templin, 225 Mosby Dr., Pineville, LA. 71360. Steve is married and he has 2 children. He presently works as Area Manager for Davis Forestry.

Paul A. Tidwell, 920 W. Sherman Ave., Williams, AZ 86046. Paul graduated in 1971, is married and has 3 children. He is presently employed as a Silviculturist with the Forest Service.

Kathy Travers, P.O. Box 124, Young, AZ 85554. Kathy is a 1975 graduate, is married and has no children. As a Forester, her specialization is Recreation management.

Lisa A. Vito, 2856 Cinnebar Circle, Safford, AZ 85546. Lisa is a 1975 graduate and has 1 child. She has been employed with the Forest Service for the past 6 years and is currently a Forester, specializing in Timber and Recreation management.

Steven M. Walker, P.O. Box 172, Mt. View, WY 82939. Steven is married and has no children. He is a TMA to District Ranger for the U.S.F.S.



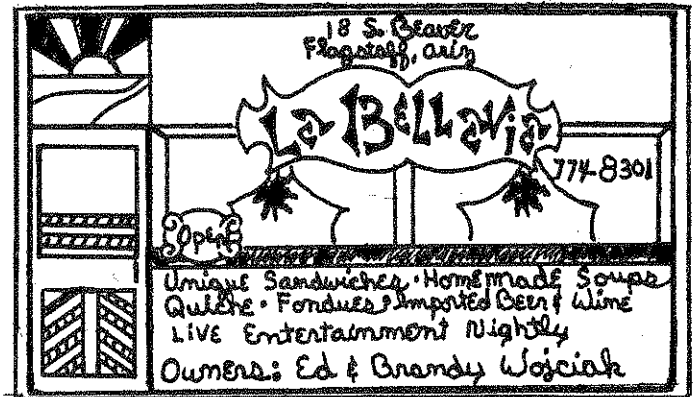
## CAMPING CLOTHING SURPLUS

CHECK OUR PRICES

OPEN  
EVENINGS  
'TIL  
8:00  
SUNDAYS-  
9:00  
5:00

14 W. SANTA FE FLAGSTAFF 779-4521

# PEABODY COAL COMPANY



ANTCO, INC. dba

## LOGGERS SUPPLY SERVICE

620 E. Butler Avenue  
Flagstaff, Arizona 86001  
602 / 779-2211 or 774-2596

SUPPLIES & ACCESSORIES  
FOR ALL YOUR  
CHAIN SAW NEEDS



## Gen SHOE HOSPITAL



- ★ Expert Boot & Shoe Repair
- ★ Vibram Soles
- ★ Bailey-Resistol & Stetson Hats
- ★ Wrangler-Levi & Lee Jeans and Jackets

774-3543

111 N. Leroux • Downtown Flagstaff

# LONE STAR BAR-B-QUE

Sliced Brisket, Beef & Pork Ribs, Chopped Beef, Links, Chicken  
Open Mon-Sat 11 a.m. to 8 p.m. / Now Open Sundays 4 to 8 p.m.  
4 SOUTH SAN FRANCISCO 774-0984

backpacking—x-c skiing—mountaineering  
technical mountaineering instruction  
R.M.S.I.A. certified nordic ski instruction



the alpineer

lee dexter, bruce grubbs & larry coats  
406 south beaver st.

774-7809  
flagstaff, arizona 86001

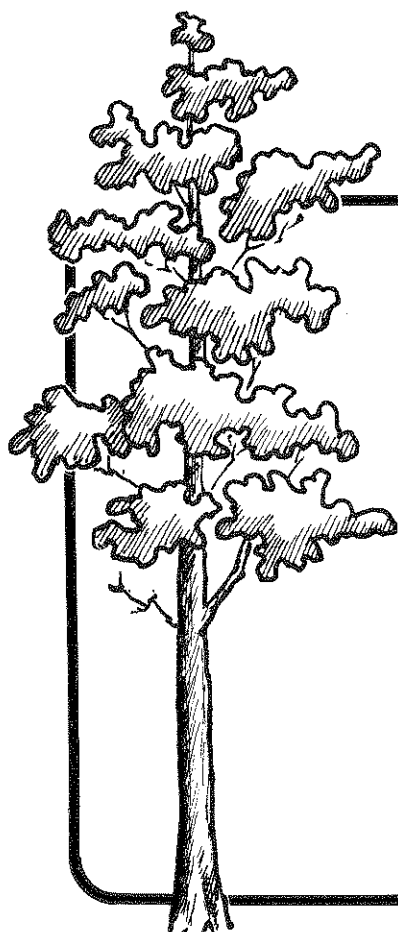
**MORE FORESTERS  
MARK WITH  
NEL-SPOT  
PAINT AND  
PAINT MARKING  
PRODUCTS  
THAN WITH  
ANY OTHER**



The next time you have a marking problem why don't you do as the thousands of other foresters do. Lick the problem with NEL-SPOT.

**NELSON PAINT COMPANY**

IRON MOUNTAIN, MICHIGAN  
MONTGOMERY, ALABAMA  
McMINNVILLE, OREGON



## Some forestry basics —cannot be bought.

The basics you'll use in your forestry career cannot be bought. They were given to you: your hands, your eyes, your mind.

You develop these basics through education and experience. And you supplement them with man-made tools.

That's where **Forestry Suppliers, Inc.** fits in. The tools we sell make it easier for you to develop the basics you were given.

Team up your basics with our tools for your success.



**Forestry Suppliers, Inc.**

205 West Rankin Street  
Post Office Box 8397 - Jackson, Mississippi 39204

1-601-354-3565



(602) 774-8300

**Flag Loggers Supply**

1116 EAST SANTA FE AVENUE • FLAGSTAFF, ARIZONA 86001

**JIM & DESI BUELL**  
OWNERS

AUTHORIZED SALES & SERVICE  
FOR HUSQVARNA, HOMELITE  
AND McCULLOCH CHAIN SAWS

**JELD-WEN INC.**

825 E. BUTLER ST.  
FLAGSTAFF, ARIZONA

P.O. BOX 1016

MANUFACTURES OF:

WINDOW AND DOOR PRODUCTS

JX-7

WINDOW FRAMES

DOOR FRAMES    INSIDE JAMBS

**NI MARCO PIZZA**

101 S. BEAVER    779-2691

ALL PIZZA'S MADE  
WITH FRESH PINE KNOTS DAILY

*Congratulations*  
*N.A.U. Graduates*  
*Class of '82-'83*



**Ben Meadows Company**

3559 Broad Street, Atlanta (Chamblee), Georgia 30366  
Telephone (404) 455-0907 / Cable Address "Benco"

A LEADING SUPPLIER OF FORESTRY,  
GEOLOGY & ENGINEERING EQUIPMENT  
FOR OVER 25 YEARS

PROFESSIONAL TRAVEL SERVICE ANYWHERE  
UNDER THE SUN...

Computer Trained Agents  
- Airline, hotel, car  
rental, tour & cruise  
reservations

Bonded for your protection

504 NORTH HUMPHREYS  
Flagstaff, Arizona 86001  
(602) 779-5178

**flagstaff**  
**travel & tours**