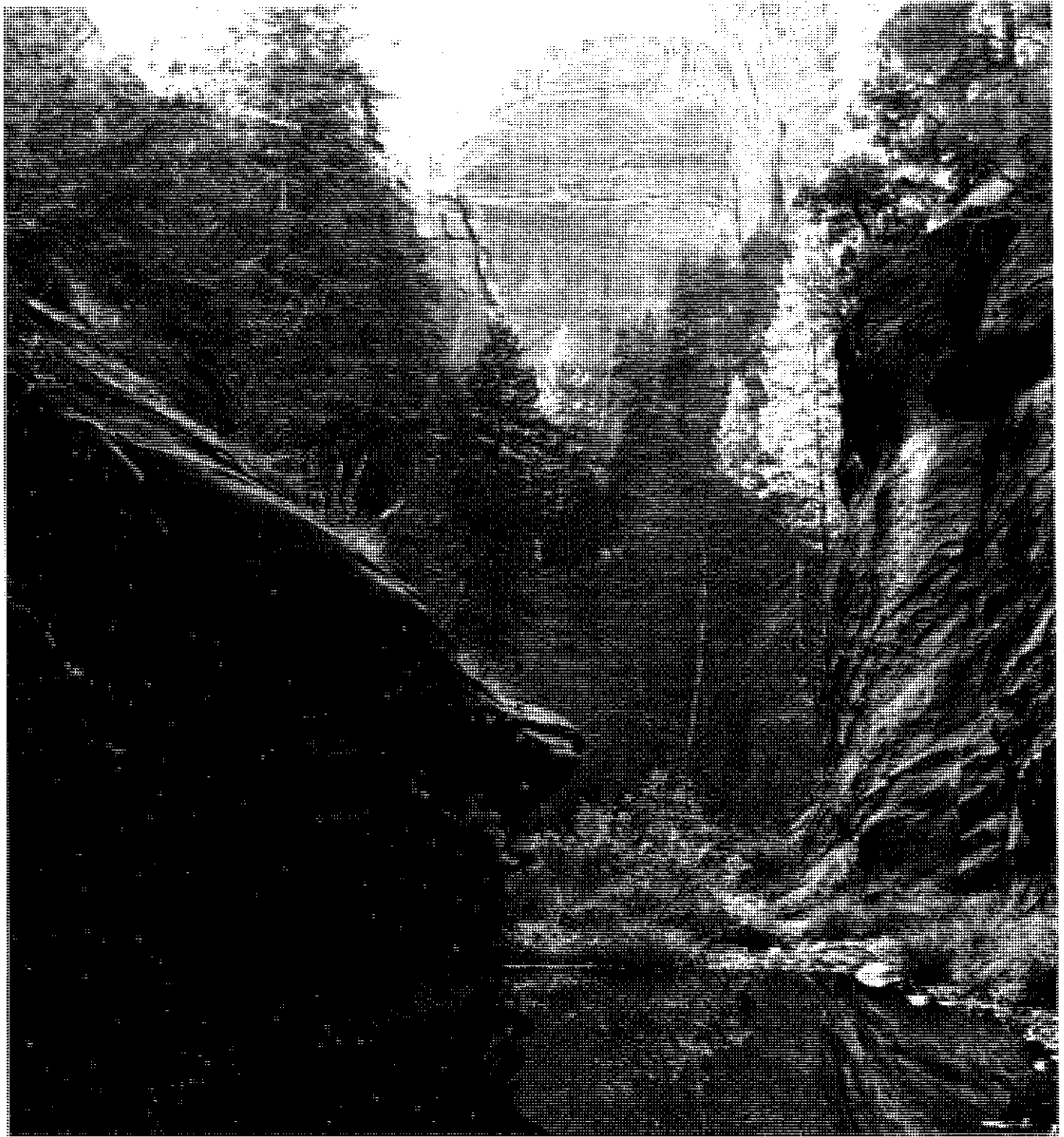
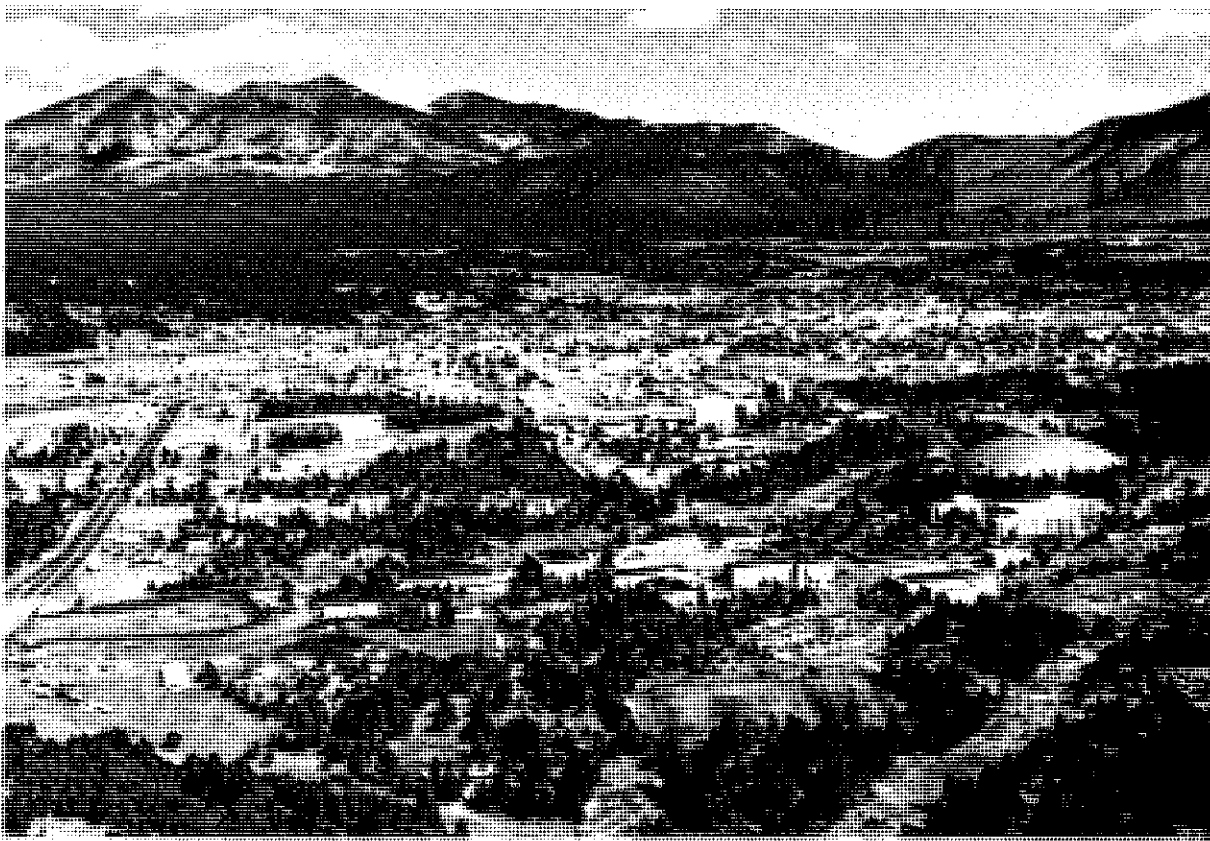


Annual Yield 1985



Northern Arizona University
School of Forestry

COVER PHOTO: West Fork of Oak Creek, Oak Creek Canyon, Arizona.



PUBLISHED BY
NORTHERN ARIZONA UNIVERSITY FORESTRY CLUB,
STUDENT CHAPTER SOCIETY OF AMERICAN FORESTERS
FLAGSTAFF, ARIZONA
1985

ADVERTISING EDITOR: KEN LARISON

ALUMNI EDITOR: CELESTE EPPERLY

CALLIGRAPHY: GLORIA JUDGES

EDITOR: RICH EDWARDS

LAYOUT: RICH EDWARDS

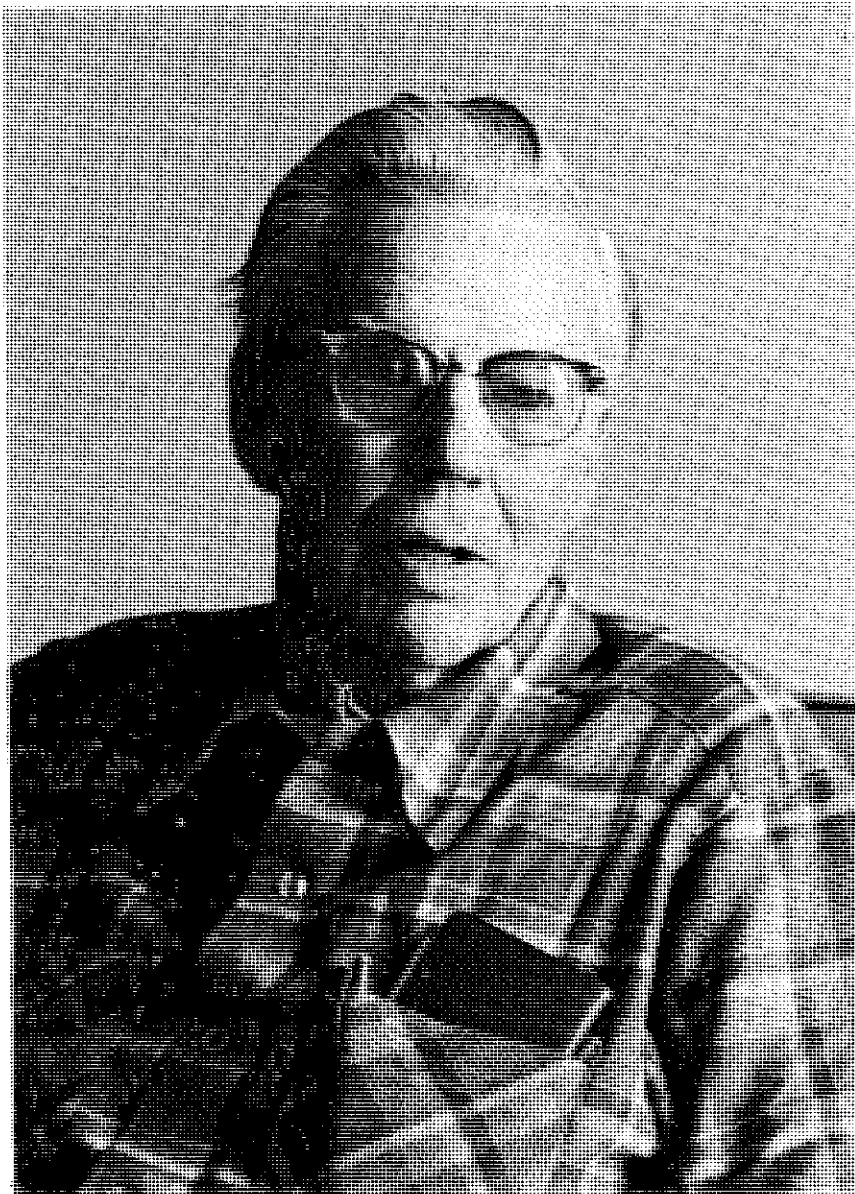
PRINTING AND TYPESETTING: THE PRINT SHOP

SPECIAL THANKS TO: MARK FLYNN
CAROL RUCKER
DON SCHROEDER

PHOTOGRAPHERS: R.W. BEHAN
RICH EDWARDS
TOM GIESEMANN
PAULA GUSSIO
GLORIA JUDGES
KEN LARISON
P.J. MCARDLE
J.T. MCCOLLOUGH
NAU PUBLIC INFORMATION
LISA NELSON
KIM PAUL
MIKE RICHARDSON
DEMMY VIGIL

WRITERS: GREG COUSLER
RICH EDWARDS
CELESTE EPPERLY
DAVE GARRETT
KEN LARISON
DORIS MORRIS
MIKE RICHARDSON

DEDICATION



GLENN VOORHIES

1906–1984

This year's Forestry Club Annual Yield is dedicated in memorium to a former member of the NAU School of Forestry faculty, Glenn Voorhies.

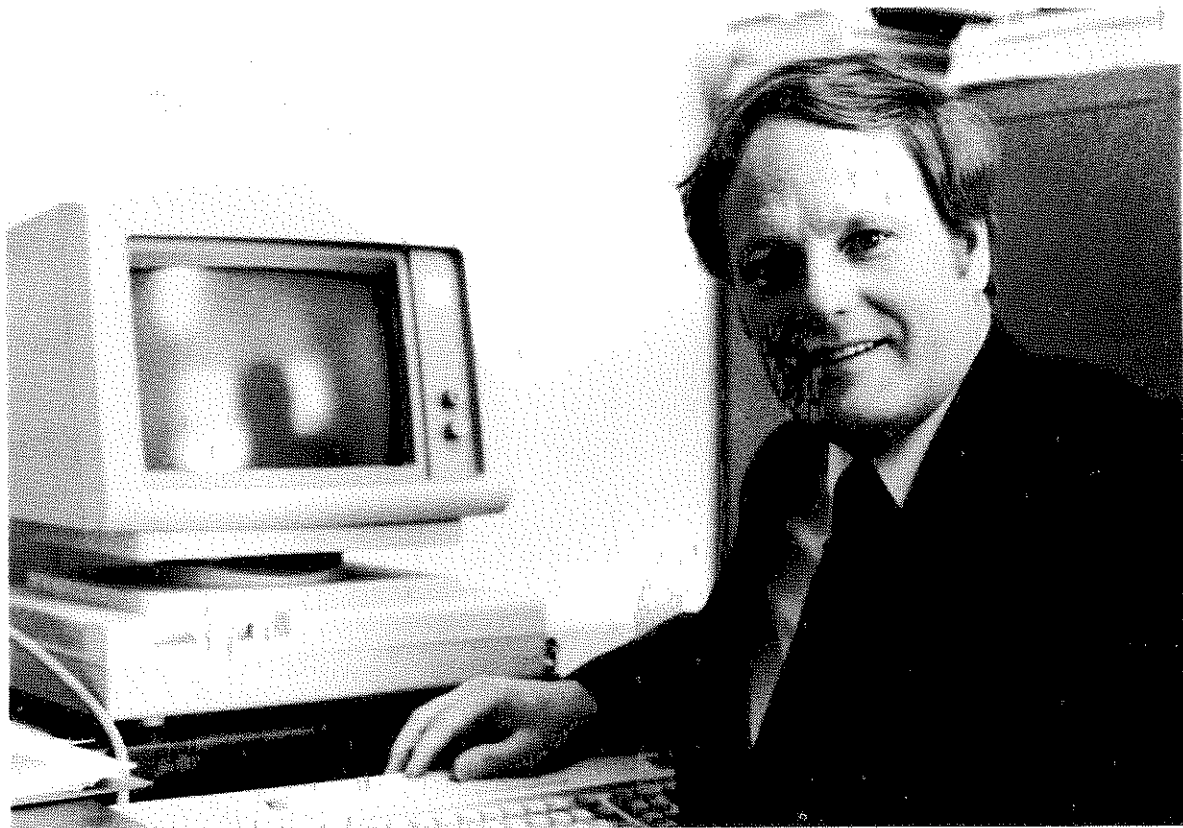
Mr. Voorhies joined the faculty at NAU in September of 1961 as associate professor of Wood Sciences and Forest Products Utilization after over 30 years of wood industry and Oregon State University teaching experience. He then taught at NAU for 15 years until 1976 when he then assumed semi-retired status.

His dedication to wood products and science kept him working at the School of Forestry full time until his death in January of 1984. This unselfish devotion to his work earned him a letter of commendation from the President of NAU for "Outstanding research activities in the forests of Northern Arizona". A scholarship has been named in his honor at this past year's annual Forestry Honors Convocation.

Although most forestry students have not had the privilege of meeting Glenn Voorhies, we proudly dedicate this issue of the Annual Yield to him.

—Editor

DEAN'S REPORT



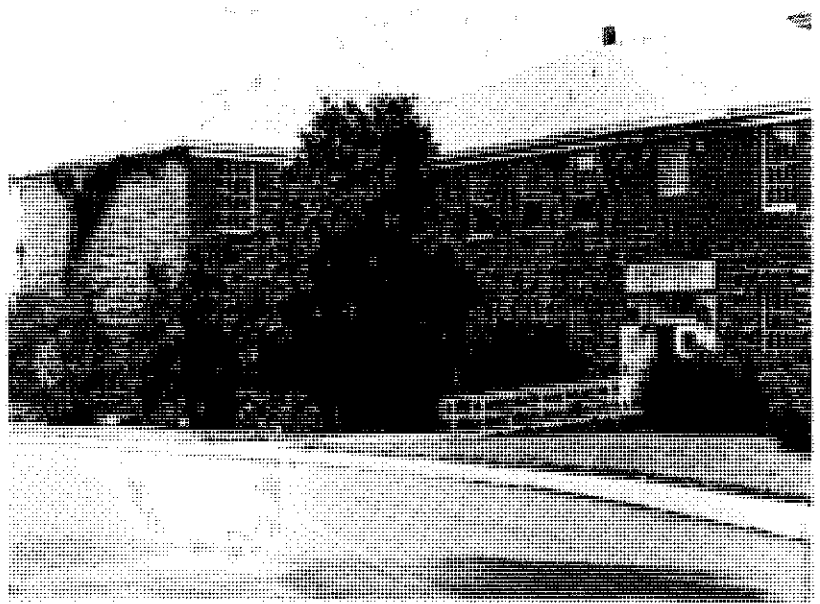
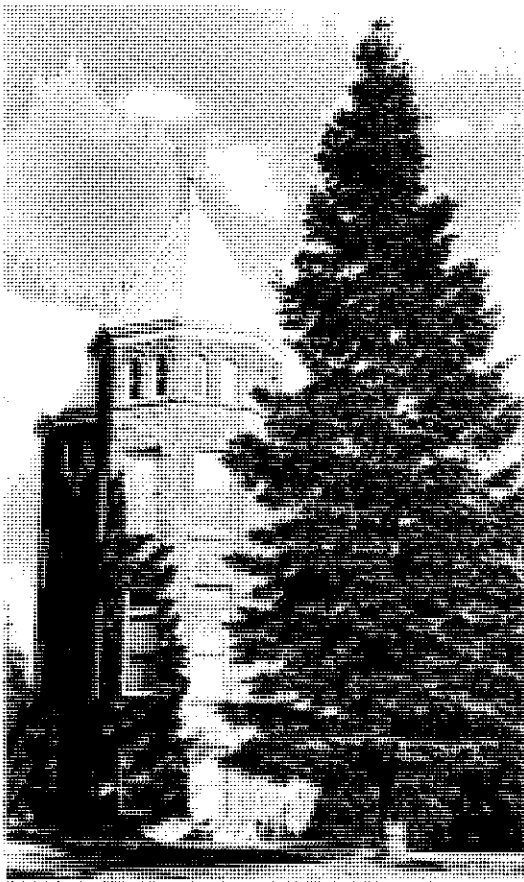
In case you wonder, and I know you do, The Forestry Club is strong and involved, with our students, faculty and community. The most recent community project involves development of a recreation area with handicapped persons. We are proud of them, and the continued recognition they give the school, yours and ours.

Just as you wonder how we are doing, we also think of you. Drop us a line to let us know about your location, job, and other pursuits. And don't forget our seniors. Keep us abreast of potential job openings.

We are going to make a special effort to keep in touch with each of you. In the next year we will be writing for updates on your career as well as letting you know how our new programs are progressing. Also, we will be gearing up to get a group of you back for homecoming. It is always great to get the real NAU "lumberjacks" home for homecoming.

We are active at your alma mater. The renovation of Frier Hall is progressing. Our new masters program in "Integrated Multi-resource Management" is taking shape. Several faculty are involved in new research and teaching projects that are making us all very proud to be a part of the school's program. Workshops are planned this summer to introduce our peers to our new program. You could be a part of that too. Give us a call.

—Lawrence D. Garrett, Dean



SCHOOL OF FORESTRY

The School of Forestry is fortunate to be located in an area where current, experimental and past management techniques can be viewed. Flagstaff's setting provides beautiful surroundings and easy access to field studies.

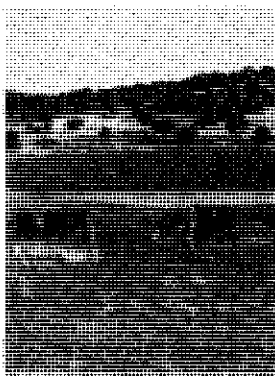
The NAU School of Forestry offers a unique undergraduate program, unparalleled by any other forestry school. Selection to be admitted into the upper division program requires two years of prerequisite courses (—courses necessary in developing a well-informed, well-rounded professional). Professors will make the final decision, selecting those best suited to begin the intensive three semester program. In Semester A, students will find themselves spending numerous hours in the field. Emphasis is centered on the rudaments of resource evaluation and the biology of forest ecosystems. No one can help wishing they could spend more time in the field during Semester B. Nevertheless, many classroom hours are spent establishing an understanding of resource management techniques and their economics. Finally, Semester C is the culmination and application of the prior semesters. Anticipation is high as the class completes the resource inventory and applies this data in a full scale, independently written, management plan. Successful managers will be rewarded with a Bachelor of Sciene degree in Forestry.

The School of Forestry, itself, will soon be occupying a renovated Friar Hall. Construction has begun on the old Friar Hall, while the school occupies portion of Old Main. Highlights of the improvements include centralizing almost all classrooms on the first floor with new and more accessible furniture, concentrating offices on the second floor and a much improved computer room. Fingers-crossed, classes will be back in Friar Hall by the fall of 1985.

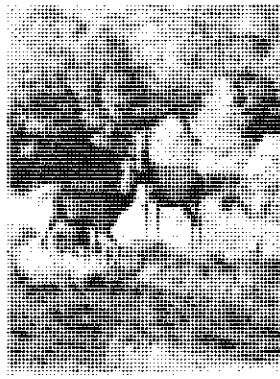
—Celeste Epperly



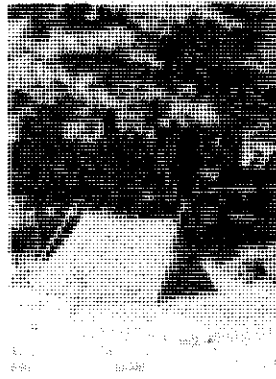
WOOD



FORAGE



WILDLIFE



RECREATION



WATER

MULTI-RESOURCE GRADUATE STUDIES AT NAU

Since 1972, the School of Forestry at Northern Arizona University has offered a unique undergraduate program. This team taught integrated curriculum has moved to the front of the class in the professional training of multiple resource managers that are so desperately needed in today's society.

To further enhance the quality of education in multi-resource forest management, the School of Forestry plans to extend its integrated program to the graduate level. Along with the current undergraduate program, the School of Forestry will now offer a Master of Forestry degree in multi-resource management and a Master of Science in Forestry emphasizing integrated multi-resource forest analysis. The MF degree requires a one year non-thesis program that is designed to upgrade the skills of current forest managers in integrated multi-resource management. In addition to existing traditional research areas, two new emphases will be possible through the MSF degree. One will stress collecting primary data using multi-resource research techniques, the other will stress the synthesis of secondary data to develop techniques for solving multi-resource management problems.

In addition, a technology transfer program will be conducted by interdisciplinary forest management teams. This program will consist of five to seven workshops of one to two weeks in length; plus a one and three week segment of the twelve month MF program. An integrated multi-resource management research program will be conducted in conjunction with government agencies and private groups. This research will provide new theories, concepts, and techniques that will be constantly critiqued by the MF and MSF programs.

These added graduate programs, scheduled to begin in the fall of 1986, will be totally coordinated with the undergraduate curriculum. By doing this, the research will provide new ideas and information to be used in the classroom at the undergraduate level.

These advancements in the graduate program will further extend the teaching excellence offered at the NAU School of Forestry, and therefore will increase the quality of education delivered to future multi-resource managers.

—Ken Larison



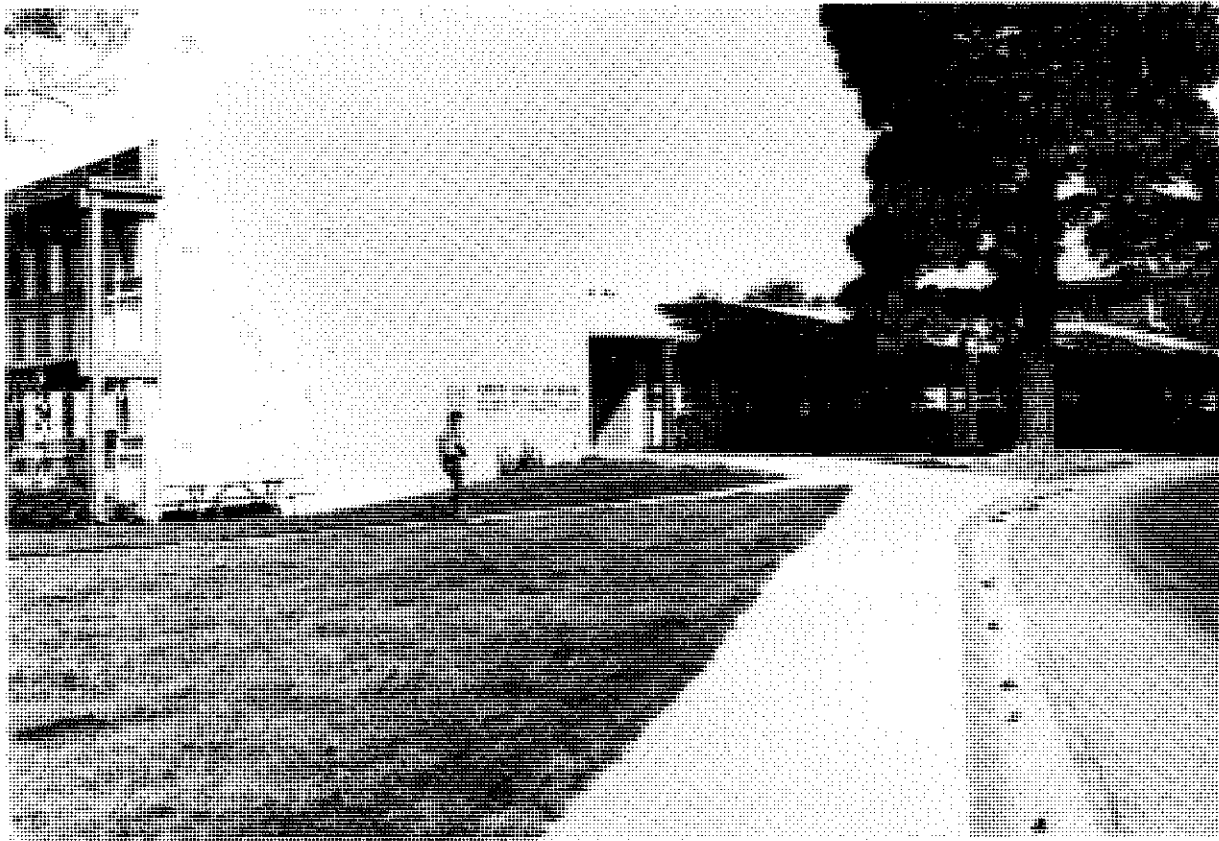
SABBATICALS ARE NO VACATIONS

If you recently noticed a face absent from the NAU Forestry School faculty, it was probably because Dr. W. Wallace Covington was on sabbatical at the Rocky Mountain Forest and Range Experiment Station at ASU. Dr. Covington went on sabbatical to re-evaluate his career goals and get new ideas. While on his sabbatical, he received two appointments. The first appointed him adjunct professor of botany and microbiology. In this capacity he attended and gave seminars and guest lectures and, in general, participated in departmental activities. He also served as advisor to graduate and undergraduate students with interests in forestry careers. His second appointment was as research forester with the Experiment Station at the ASU Forest Sciences Laboratory. As research forester, he conducted literature searches, wrote up study plans and work unit descriptions, reviewed proposed research and program directions, attended staff meetings and workshops, and acted as a Forest Service research team member.

Dr. Covington's general activities included writing grant proposals and nine publications on his research on fire as a management tool. Six of these publications have been accepted or published. Three are still in review. He also reviewed literature regarding the effects of fire on pinyon-juniper woodlands as well as literature on microcomputer applications in forestry and related software. Researching multi-resource management models and work on integrated multi-resource research programs to be implemented in both graduate and undergraduate curriculum were also aspects of his duties.

Dr. Covington's sabbatical included a wide variety of duties. Overall, he regards it as a valuable experience and recommends that every professor, at one point in his or her career, take advantage of a sabbatical to re-evaluate his or her career and look for answers.

—Doris Morris



FOREST SERVICE ON THE NAU CAMPUS?

How much do you know about the Forest Research Station on the NAU campus? Without question, the majority of the students who pass by the station daily know little or nothing about it. The Forest Research Station is an operating field branch of the Rocky Mountain Forest and Range Experiment Station. It is one of two in Arizona which are headquartered in Fort Collins, Colorado under the USDA Forest Service. In 1908, the Fort Valley Experiment Station was established near Flagstaff, Arizona and has since expanded to include eight regional experiment stations and a forest products laboratory in Washington, D.C. These stations are located in ten states and cover a total land area of approximately one quarter of the U.S.

The research on the NAU campus, led by Dr. Frank Ronco Jr. as representative of the director and Marion Durham as administrator, was opened approximately 25 years ago. It is now pursuing two research projects. One project, with Dr. Ronco as project leader, deals with the management of Southwestern forest and pinyon-juniper ecosystems. Richard W. Tinus leads the second project which is concerned with measuring the hardiness of seedlings, the study of how environmental stresses affect the physiology of trees, and how these changes in physiology influence insect populations. In addition, a research work unit has been established to conduct tests in spruce budworm rearing. Most of the research is done within the Coconino National Forest with some research plots in the Kaibab and Apache-Sitgreaves National Forests.

Although research is the chief purpose of the station, it also serves as a source of information and technology associated with the use and protection of renewable forest and range resources. There is no contractual affiliation with NAU, however, the research station library is available to the Forestry School or anyone who may benefit from the information. There is a formal relationship with NAU through grants and cooperative agreements which it offers.

The aura of mystery surrounding the functions of the research station has been a problem in the past. Many students in need of the information provided by the station were not aware of its accessibility or even its presence. So, the next time you pass by, just remember that you have a new source of information for your next research project.

—Mike Richardson

STUDENT CHAPTER

SOCIETY OF AMERICAN FORESTERS

**"With enough trees,
we'll all breathe a little
easier."**

"Trees, like other green plants, help purify the air we all breathe, by replacing carbon dioxide with oxygen.

"And with all the smoke, the exhaust, and the fumes in the air today, we need all the help we can get.

"The point is—we need our forests like never before. And we need to manage them wisely.

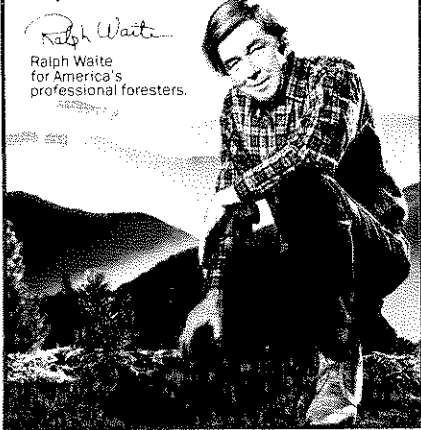
"Our job is growing. Help us all breathe a little easier. Write for information on what you can do."



Society of American Foresters

5400 Grosvenor Lane, Bethesda, MD 20814

Ralph Waite
Ralph Waite
for America's
professional foresters.



Since its' establishment in 1982, the SAF Student Chapter in conjunction with the Forestry Club is going strong. Student membership is at an all high figure of 48 people and growing. Student Membership contest sponsored by the national office in Bethesda, Maryland was the primary reason for this push for new members. The winning school will receive an all expense paid trip to their university for the SAF President, Vice President, or Immediate Past President for a speaking engagement. Results are still pending.

The Student Chapter this past fall was pleased to be involved with the Southwestern section meeting of the SAF here in Flagstaff. Students had the chance to participate in some of the proceedings and workshops during the week. The meeting was topped off by an outdoor family Bar-BQ and field set up by the Student Chapter at Dr. Wommacks' arboretum.

A new SAF officer will be added as of this spring 1985 semester. Mike Daley was appointed as the Student Chapter Membership Chairperson for the remaining part of the academic year. The new position will involve student membership recruitment activities, information dissemination, and liaison with the San Francisco Peaks Chapter, SW Section, and national Membership Chairpersons. As with the other SAF positions, the term will be for the entire academic year. This new office will hopefully simplify the Chairpersons' and Secretaries' jobs and emphasize and encourage membership to all forestry students.

Since professionalism should be cultivated in any college students' education, the SAF Student Chapter offers an avenue to enrich the forestry students' education. Enrollment in the SAF should not be of concern only to the junior or senior in the professional program. The earlier that a student becomes an SAF member, the more benefit that person receives in his or her forestry education and the more prepared that person is for life after graduation. The NAU Student Chapter, along with other student chapters, in years to come will hopefully move toward a more active participation in normal society affairs and perhaps even in the new, more progressive **Journal of Forestry**.

—Rich Edwards
SAF Student Chapter Chairperson

FACULTY

Charles C. Avery-Professor of Forestry

BS Utah State University 1961
 Cert. French National
 School of Forest and
 Waters 1962
 MF Duke University 1963
 PhD Univ. of Washington 1972

Forest Hydrology
 Watershed Management
 Environmental Conservation



Richard W. Behan-Professor of Forestry
 Dean Emeritus

BSF University of Montana 1957
 MSF University of Montana 1960
 PhD Univ. of California 1971

Resource Policy

W.Wallace Covington
 Associate Professor of Forestry

BA North Texas State Univ. 1969
 MS Univ. of New Mexico 1972
 PhD Yale University 1976

Forest Ecology
 Fire



William K. Ferrell
 Visiting Professor of Forestry

BSF University of Michigan
 MF Duke University
 PhD Duke University

Forest Ecology
 Silviculture
 Forest Soils
 Tree Physiology





Lawrence D. Garrett
Dean of School of Forestry

BS Southern Illinois Univ. 1963
MS Michigan State Univ. 1965
PhD Michigan State Univ. 1975

Multi-Resource Management
Forest Economics



William A. Groman
Associate Professor of Forestry

BSF Penn State University 1953
MF Oregon State Univ. 1969
PhD Oregon State Univ. 1972

Forest Measurements



Bill Holmes
Lecturer

BSF Colorado State University 1950

Resource Management
Paraprofessional



Ernest A. Kurmes-Professor

BA Lehigh University 1953
MS Yale University 1957
MF Yale University 1958
PhD Yale University 1961

Silvics
Silviculture

Robert E. Larson
Associate Professor of Forestry

BA Univ. of Colorado 1966
MS Univ. of Colorado 1968
PhD Colorado State Univ. 1976

Wood Technology
Wood Utilization



Robert Mathiasen
Adjunct Professor of Forestry

BS Calif. State College 1972
MS Colorado State Univ. 1974
PhD Univ. of Arizona 1977
MA Northern Arizona Univ. 1984

Forest Pathology
Forest Measurements



Charles O. Minor
Dean Emeritus
Professor Emeritus of Forestry

BSF Iowa State Univ. 1941
MF Duke University 1942
PhD Duke University 1958

Forest Measurements
Forest Management



Merton T. Richards
Associate Professor of Forestry

BS Univ. of Montana 1971
MS Univ. of Arizona 1974
PhD Univ. of Arizona 1980

Forest Economics
Forest Recreation





Michael R. Wagner
Assist. Professor of Forest Protection

BSF	Univ. of Wisconsin	
	-Madison	1972
MS	Univ. of Wisconsin	
	-Madison	1977
PhD	Univ. of Wisconsin	
	-Madison	1980

Forest Entomology
Forest Pathology



Alan S. White
Assistant Professor of Forestry

BA	Williams College	1973
MS	Univ. of Montana	1976
PhD	Univ. of Minnesota	1981

Forest, Range, and Wildlife Ecology



Donald E. Wommack
Professor of Forestry

BS	Purdue University	1953
MS	Oregon State Univ.	1960
PhD	Oregon State Univ.	1964

Dendrology
Logging
Aerial Photo Interpretation
Forest Genetics



D. Brent Wood
Associate Professor of Forestry

BS	University of Utah	1967
MF	Utah State Univ.	1973
PhD	Utah State Univ.	1978

Forest Economics
Forest Management

STAFF



Chuck Bullington
Research Assistant, School of Forestry

Tom Huntsberger
Research Assistant, Analytical Chemistry Lab
Bilby Research Center



Inez Light
Administrative Assistant, School of Forestry
Office



Mrs. Gisela McCormick
Administrative Assistant to the Dean, School
of Forestry Office



Elizabeth Principe-Blake
Lab Technician, Forest Entomology Lab
Bilby Research Center

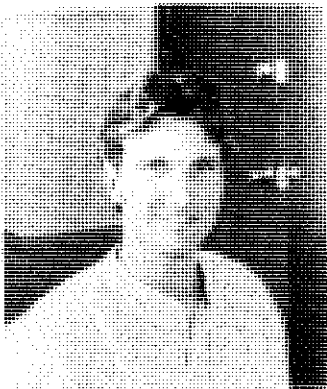
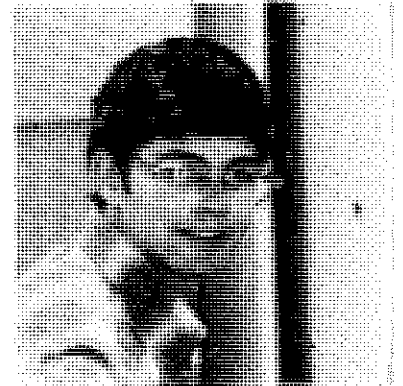


GRADUATE STUDENTS



Dave Caylor
from: Flagstaff, Arizona
undergrad: BSF NAU, 1981.
thesis topic: Characteristics and Perceptions of
Sportfishing Visitors to Lees' Ferry,
Arizona: Implications for Management.

James Cook
from: Austin, Texas
undergrad: BSF Stephen F. Austin State Univ., 1977.
thesis: Assessing competition in the understory of
Ponderosa Pine Forests-A Greenhouse and
Field Approach.



Gary Domis
from: Cincinnati, Ohio
undergrad: BSF Ohio State University, 1977
thesis topic: Developing a complete life history
bioassay for Pine Sawflies (*Neodiprion*
spp.) of Ponderosa Pine.

Kitty Elliot
from: Kingman, Arizona
undergrad: BSF NAU, 1982
thesis topic: The effect of various grass species
on plant moisture stress of S.W.
Ponderosa pine seedlings.





Eric Fontaine
from: Exeter, New Hampshire
undergrad: University of New Hampshire, BS
thesis topic: Simulation of Rain and Mathematical
Modeling of Erosion.



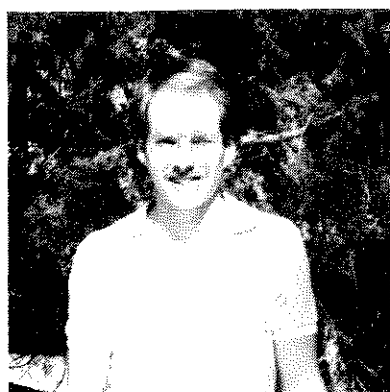
Debbie McCollough
from: Flagstaff, Arizona
undergrad: BS NAU, 1981
thesis topic: Influence of Moisture Stress on the
Conifer Sawfly (*Neodiprion fulviceps*)
in Ponderosa Pine.



Carolyn Ower
from: Flagstaff, Arizona
undergrad: BSF NAU, 1981
thesis topic: Effects of forest floor removal by
burning and raking on soil ammonium
and nitrate and pine seedling
moisture stress.



Gina Rizzo-Orr
from: Flagstaff, Arizona
undergrad: BSF NAU, 1980
thesis topic: Susceptibility of white pines to dwarf
mistletoes as determined by artificial
innoculation.



Jim Steinshouer
from: Glendale, California
undergrad: BSF University of Idaho, 1982
thesis topic: Identification and Description of
selected wood species in Arizona.

SENIORS



Cris Alba
Los Angeles, California



Holly Aumack
Flagstaff, Arizona



Elona Ballou
Las Vegas, Nevada



Mark Coker
South Plainfield, New Jersey



Ken Cormier
Tucson, Arizona



Michael Daley
Tucson, Arizona



Robin David
Mesa, Arizona



Andrea Di Tommaso
Scottsdale, Arizona



Eric Eager
Tucson, Arizona



Rich Edwards
Valley Forge, Pennsylvania



Celeste Epperly
Crystal Lake, Illinois



Stephen K. Forry
Sierra Vista, Arizona



Mary Genge
Phoenix, Arizona



Thomas G. Giesemann
Scottsdale, Arizona



Charmaine Goushaw
Sahuarita, Arizona



Laurie Gruel
Waukesha, Wisconsin



David Hartle
Fort Defiance, Arizona



Chris Kline
Tempe, Arizona



Jim Konopka
Phoenix, Arizona



Andy Kudick
Phoenix, Arizona



Ken Larison
Monroe, Ohio



Jane (Cubby) Lash
Scottsdale, Arizona



Jeff Mangun
New Lenox, Illinois



Jonathan Martin
Gallup, New Mexico



Stephen Monroe
Phoenix, Arizona



Ken Nease
San Marcos, California



David P. Olsen
Sierra Vista, Arizona



Kenneth W. Ramseyer
Phoenix, Arizona



W. Brett Reid
Prescott, Arizona



Carol L. Rucker
Glendale, Arizona



Don Schroeder
Needles, California



Larry Simpson
Flagstaff, Arizona



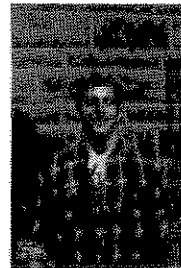
Dave Sinton
Honolulu, Hawaii



Lorie Stoller
Albuquerque, New Mexico



Demica (Demmy) Vigil
Albuquerque, New Mexico

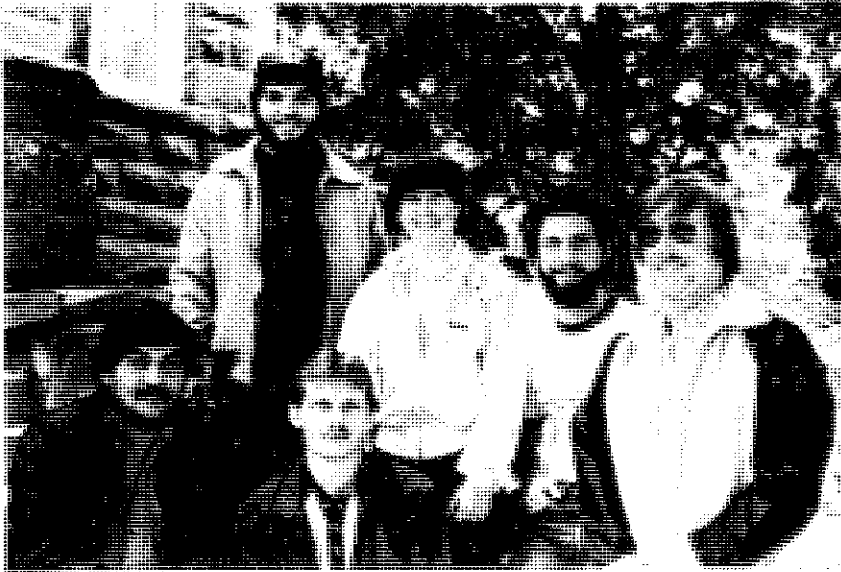


John Wiggins
Phoenix, Arizona



Katrina Wright
Morenci, Arizona

JUNIORS



CREW 1 (FRONT ROW)

Ron Acevedo
Bob Anderson
Ron Alt

CREW 2 (BACK ROW)

Greg Cousler
Laura Brashears
Mike Block

CREW 3 (FRONT ROW)

Karen Ela
Jeff Davidson
Sandy Eklund(not pictured)

CREW 4 (BACK ROW)

Holly Ennist
Hope Greer
Mark Flynn



CREW 5(FRONT ROW)

Carl Jensen
Dan Heubner
Tom Howdyshehl(not pictured)

CREW 6 (BACK ROW)

David Krueger
Jae Lauderback
David Koch



CREW 7 (FRONT ROW)

Lori Loomis
Chris Long
Mary Lavin(not pictured)

CREW 8(BACK ROW)

Doris Morris
Ray Martinez
Marilyn Nichols

CREW 9 (FRONT ROW)

Mike Richardson
Kim Paul
Rolf Olson

CREW 10 (BACK ROW)

Steve Ross
Cecelia Romero
Andy Schlosberg



CREW 11 (FRONT ROW)

Deneyse Sereno
Floyd Sebald
Steve Selva(not pictured)

CREW 12 (BACK ROW)

Lola Serano
Charles Sotomayor
Robert Spiesman(not pictured)



CREW 13

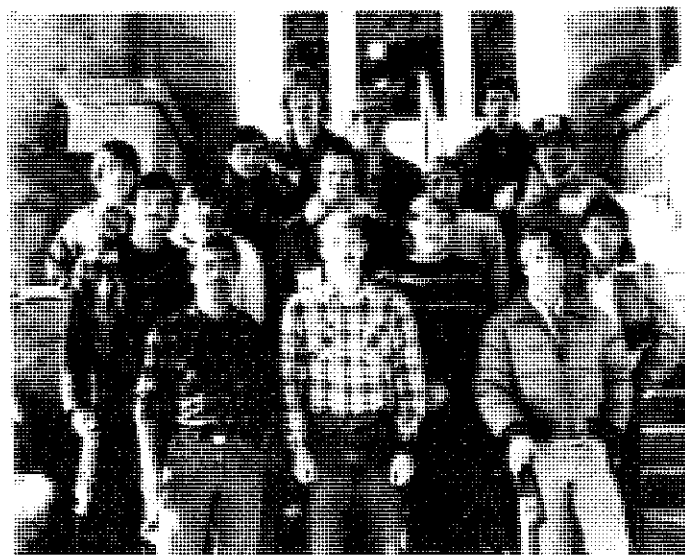
Arnold Wilson
Kirsten Tinning
Rick Thomas

SOPHMORES

Front Row
Leon Metts
Thomas Young
Annette Mitchell
Mark Wisner

Middle Row
Will Mitchell
Greg Glick
Pamela Raskob
Allison Sparks
Caroline Green

Back Row
Dave Stamper
Joe Menzel
Jerome Jenkins
Lucinda Paddock
Shawn Blackburn



FRESHMEN



GRIN AND BEAR IT



LOOK AT THE RESIN ON THAT BUD!



IT'S ALL RELATIVE IN THE END



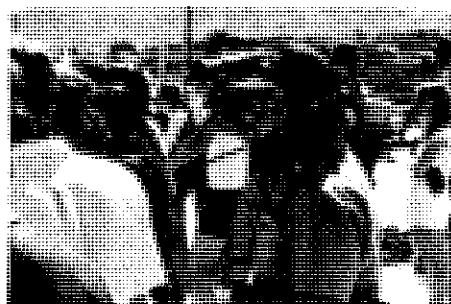
HOMEWORK? NO WAY!



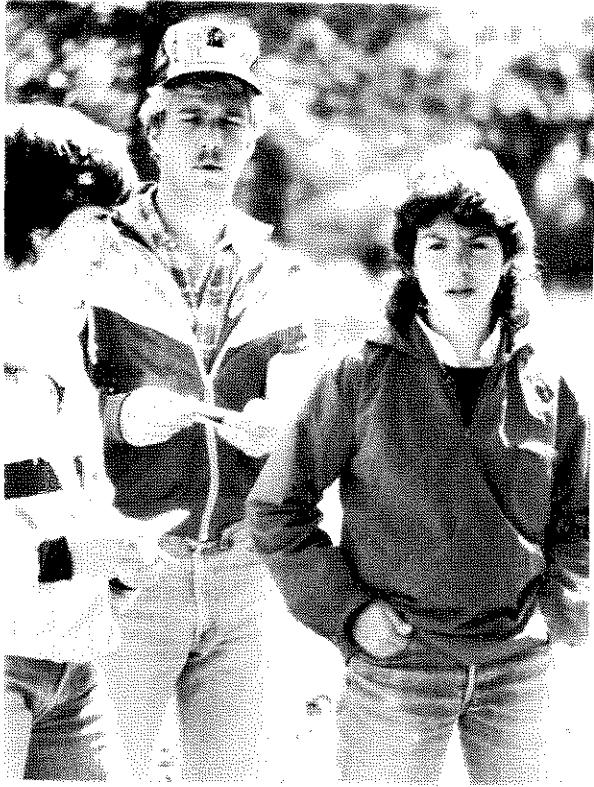
NOTHIN' A LEETLE WEED COULD'NT CURE



WOULD YA' LOOK AT THAT ROAD CUT



IS THAT WOMAN NAKED?



I'M SO CONFUSED! COULD YOU REPEAT THAT?



THIS LOOKS LIKE A GOOD
PLACE FOR LUNCH



NATURE CALLS



SUBJECT: HACKY 101



STAND STILL KIRSTEN!



GIVE ME A HARD TIME
AND I'LL THROW IT AT YOU!

FORESTRY CLUB

FALL '83 OFFICERS

Front Row:

Kirk Apt-SAF Student Chapter Secretary
Ken Larison-President
Andy Kudick-Seargent-at-Arms
Patty Cohn-Senior Representative

Back Row:

Charmaine Goushaw-Treasurer
Carol Rucker-Junior Representative
Greg Cousler-Sophmore Representative
Elona Ballou-Secretary

Ken Ramseyer-Recorder/Historian

Not Pictured:

Denny Vigil-Vice President
Bob Rokusek-Social Director
Sofiya Smith-Freshman Representative
Debbie Binniwies-SAF Student Chapter Chairperson
Dr. Ernie Kurmes-Faculty Representative



SPRING '84 OFFICERS

Front Row:

Kirk Apt-SAF Student Chapter Secretary, Senior Rep.
Ken Larison-Seargent-at-Arms
Ken Nease-President
Rich Edwards-Recorder/Historian

Back Row:

Andre DiTommaso-Vice President
Charmaine Goushaw-Secretary
Carol Rucker-Treasurer
David Krueger-Sophmore Representative

Not Pictured:

Denny Vigil-Social Chairperson
Dave Hartle-Junior Representative
Dale Deiter-Freshman Freshman Representative
Debbie Binniwies-SAF Student Chapter Chairperson
Dr. Don Womack-Faculty Representative



FALL '84 OFFICERS

Front Row:

Caroline Greene-Sophmore Representative
Bob Anderson-Social Chairperson
Bruce Bebo-AWFC Representative
Jim Smith-Freshman Representative

Middle Row:

Ray Martinez-Treasurer
Mary Lavin-Secretary
David Krueger-Vice President
Greg Cousler-President
Steve Monroe-Senior Representative

Back Row:

Rich Edwards-SAF Student Chapter Chairperson
Cecilia Romer-Seargent-at-Arms
Marilyn Nichols-Junior Representative
Kim Paul-Recorder/Historian

Not Pictured:

Celeste Epperly-SAF Student Chapter Secretary
Dr. Dave Garrett-Faculty Representative



SPRING '85 OFFICERS

Front Row:

Ray Martinez-Treasurer
Greg Cousler-President
Rich Edwards-SAF Student Chapter Chairperson

Middle Row:

Doris Morris-Junior Representative
Mike Richardson-Recorder/Historian
Kevin Gericke-Freshman Representative

Back Row:

Cecelia Romero-Secretary
David Krueger-Social Chairperson
Kim Paul-Vice President

Not Pictured:

Steve Monroe-Sergeant-at-Arms
Mike Daley-SAF Membership Chairperson, Senior Rep.
Celeste Epperly-SAF Student Chapter Secretary
Pam Raskob-Sophomore Representative
Bruce Bebo-AWFC Representative
Dr. Dick Behan-Faculty Representative



GO AHEAD PUNK, MAKE MY DAY

FIELD DAY



CAN I INTEREST YOU IN SOME
LAND IN SOUTHERN ARIZONA?



WE'RE TALKING TALKIN' HERNIA



SUMTHIN' SMELLS



WHAT FORM!

FIELD DAY



SMILE WHEN YOU SAY THAT

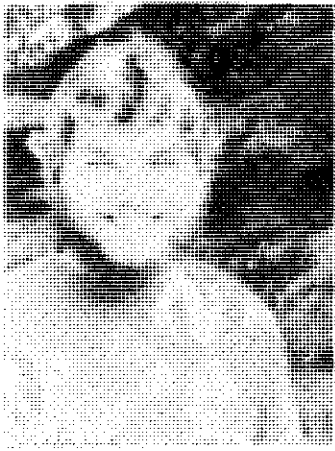


WANNA THROW MY LOG?



I THREW THAT?





PRESIDENT'S MESSAGE

The Forestry Club at NAU provides many avenues of interest for students, faculty, and professionals alike. These range from meeting new people, making new friends, meeting juniors and seniors to find out what the professional semesters are like, meeting professionals in the field, and developing a professional attitude towards forestry more than classwork alone can provide. Let us not forget the club scholarship, fund raising activities such as the community field day, and just plain having fun.

Some of the members are more interested in meeting professionals and developing a professional attitude. There folks hope to learn to handle responsibility with people and for people as well as speaking abilities and leadership qualities. These members hope to gain something from the club in the form of learning and future employment opportunities.

To accomplish these goals we must maintain a respectable image with ourselves, our faculty, and professionals in the field. A respectable and successful club may give its members a higher chance for employment compared to other students not involved with the club.

The club enrollment varies from year to year. It is important to get students interested and involved in their freshman and sophomore years for a strong and impressive club body. However, there are many problems with this objective. Many new students are undecided with respect to their major. Also, many students change their major. The most significant problem is that new students usually don't know much about forestry at this point in their education. As a result they are not serious forestry students. As students approach the junior year professional semesters, they become more aware of career objectives and what they want out of forestry. Although due to some of the club bylaws concerning voting and criteria for holding office, it is hard to get new people involved at this time.

The most important aspect to remember is that no matter what the size of the club is, there is always a nucleus of people who are excellent students and excellent hardworking club members.

—Greg Cousler
President, NAU Forestry Club

FORESTRY HONORS CONVOCATION

1983

ALTA VISTA GARDEN CLUB SCHOLARSHIP
Alene Nitzky

APPLEQUIST AWARD
John Kent Cassity

DuBOIS FOUNDATION SCHOLARSHIP
Patricia J. Cohn
Suzanne Marie Harrison
Shari Lynn Krimm

EAST GARDEN CLUB SCHOLARSHIP
Andrew P. Kudick

EMPIRE MACHINERY COMPANY FORESTRY HONOR SCHOLARSHIP
Michell Desiree Lee

FORESTRY ALUMNI SCHOLARSHIP
Kendall G. Southard

FORESTRY CLUB SCHOLARSHIP
Kenneth F. Larison

GREENLAW FORESTRY SCHOLARSHIP
Andrea DiTommaso
Kenneth W. Ramseyer

HOO-HOO-ETTE PHOENIX CHAPTER #13 SCHOLARSHIP
Mary Genge
Carol L. Rucker

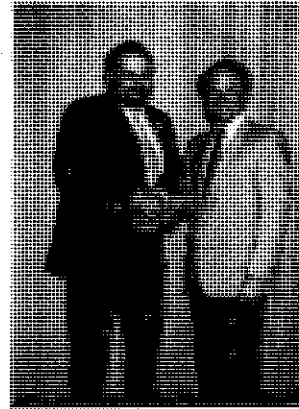
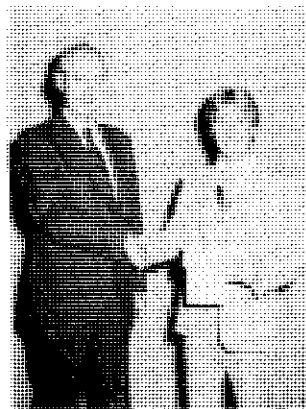
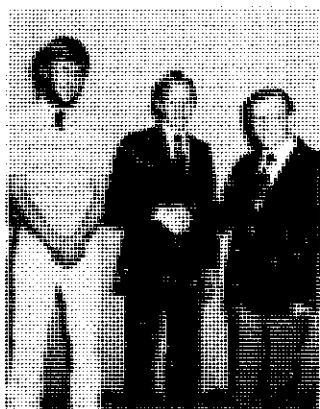
NORTHERN ARIZONA LOGGERS ASSOCIATION SCHOLARSHIP
Kenneth N. Nease

RAYMOND FOUNDATION FORESTRY SCHOLARSHIP
William F. Stansfield

SOUTHWEST FOREST INDUSTRIES SCHOLARSHIP
Kirk Edward Apt
Michael Jon Wilson

TONY CZAK MEMORIAL SCHOLARSHIP
William R. Frament

VON DUNFORD FORESTRY SCHOLARSHIP
Richard M. Edwards



1984

ALTA VISTA GARDEN CLUB SCHOLARSHIP
Mary S. Lavin

APPLEQUIST AWARD
Kenneth W. Ramseyer

DuBOIS FOUNDATION SCHOLARSHIP
Andrea Marie DiTommaso
Richard M. Edwards
David P. Olsen

EAST GATE GARDEN CLUB SCHOLARSHIP
Daniel P. Huebner

EMPIRE MACHINERY COMPANY FORESTRY HONOR SCHOLARSHIP
Carol L. Rucker

FORESTRY ALUMNI SCHOLARSHIP
Ken M. Nease
Marilyn E. Nichols

FORESTRY CLUB AWARD
Mark Alan Flynn

GOLDMARK FORESTRY SCHOLARSHIP
Aronold Wilson

GREENLAW FORESTRY SCHOLARSHIP
Thomas E. Giesemann
Katrina L. Wright

HOO-HOO-ETTE PHOENIX CHAPTER #13 SCHOLARSHIP
Deneysel Serino

NORTHERN ARIZONA LOGGERS ASSOCIATION SCHOLARSHIP
Kenneth F. Larison

RAYMOND FOUNDATION FORESTRY SCHOLARSHIP
Mary A. Genge

SOUTHWEST FOREST INDUSTRIES SCHOLARSHIP
Andrew P. Kudick
Donald Lee Schroeder

GLENN VOORHIES SCHOLARSHIP
Larry Simpson

TONY CZAK MEMORIAL SCHOLARSHIP
Celeste A. Epperly

VON DUNFORD FORESTRY SCHOLARSHIP
Lila Hope Greer

XI SIGMA PI FORESTRY HONORS SOCIETY

1985 OFFICERS

Don Schoeder-Forester
Carol Rucker-Secretary/Fiscal Agent
Ken Ramseyer-Associate Forester
Jim Konopka-Ranger

1984 INITIATES

Christina Diane Alba
Elona Ballou
Mark Coker
Michael Daley
Andrea DiTommaso
Richard M. Edwards
Eric A. Fontaine
Mary Genge
Laurie Gruel
Suzanne M. Harrison
David Hartle
Kenneth Martin Karkula

Christopher Kline
James M. Konopka
Jane Lash
Stephen Monroe
Mary Jane Moore
Kenneth M. Nease
David Paul Olsen
Kenny Ramseyer
Carol L. Rucker
Don L. Schroeder
Katrina Wright

1985 INITIATES

Laura Brashears
Jeff Davidson
Karen Ela
Susan Erwin
Tom Howdysshell
Dan Huebner
Dave Koch
Lori Loomis
Ray Martinez
Marilyn Nichols
Kim Paul
Cecelia Romero



AWFC CONCLAVE 1984

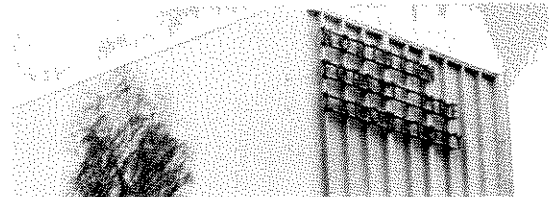
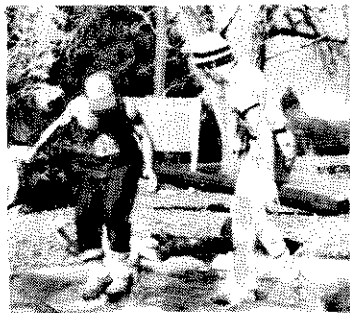
UNIVERSITY OF MONTANA

MISSOULA, MONTANA

During the week of April 24-27, the NAU Forestry Club sponsored three members to represent our school at the 1984 Association of Western Forestry Clubs Conclave at the University of Montana. The conclave was very well organized and consisted of field trips to local forestry-natural resource oriented locations and businesses, and of course the famed conclave logging competition. The conclaves' focus was on multiple resource management.

The 1985 conclave will not be held since no schools in the AWFC expressed interest in hosting the conclave besides Humboldt State University. However, Humboldt State by AWFC rules is not allowed to hold a conclave since they hosted a conclave in the past three years. Hopefully in years to come other schools in the AWFC besides Humboldt State, NAU, and University of Montana will express interest in being host schools. The conclaves are a great benefit both educationally and recreationally and offer potential host schools a chance to show others what their school is about and what the area has to offer.

—Rich Edwards



MORMON LAKE POT LUCK



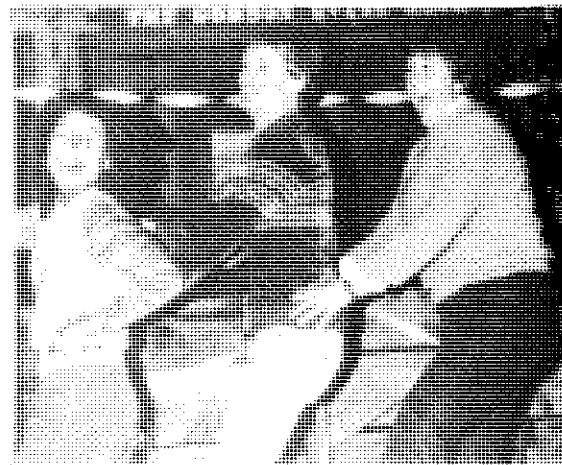
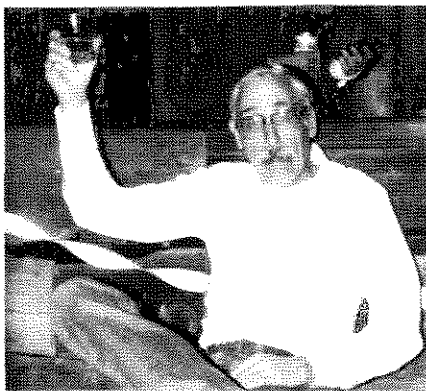
KISS ME YOU FOOL!



OHhh LORD IT'S HARD
TO BE HUMBLE.....



BAD BREATH





WHEN'S THE NEXT REST STOP?



MANY PARTS OF THE TREE ARE EDIBLE



O.K. STEVE THE COAST IS
CLEAR,BREAK OUT THE J.D.



HAVE YOU EVER CONSIDERED THE FOREIGN LEGION?



HEY,WE'RE HAVIN' FUN NOW



WHAT D'YA MEAN WE DID THIS WRONG?



BOY THEM LIGHTS ARE BRIGHT



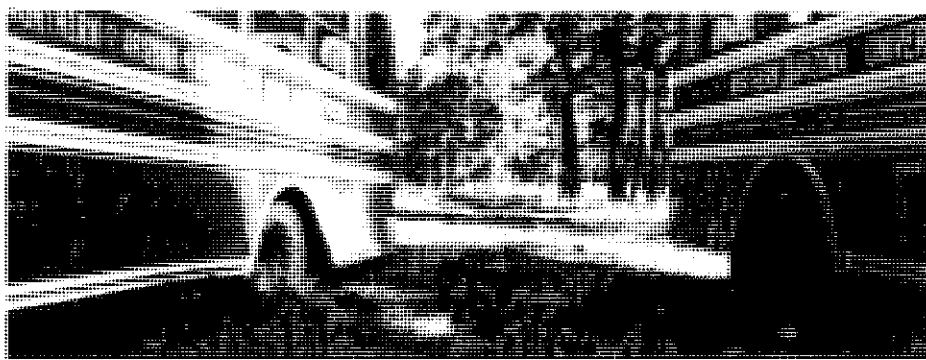
THINK WE CAN MAKE IT ACROSS THE BORDER?



2 SHOTS OF GIN, 1 SHOT OF VERMOUTH.....



IS THAT REALLY A UFO?



ANYBODY GOT A WINCH?

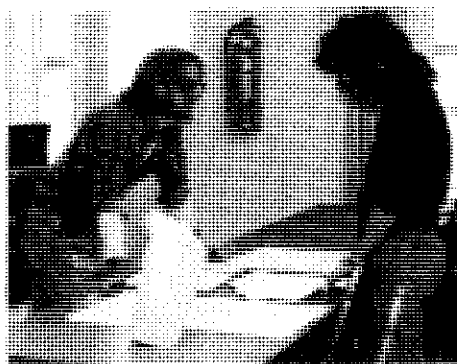


SEMESTER B SIDE EFFECTS



WHAT DO WE KNOW? WE WERE LOST

LETS SEE, \$30W, 30 CHANS
TO MOUNTAINEER TAVERN



WELL HOW ABOUT SATURDAY NIGHT THEN



ARE WE HAVING A RECREATIONAL
EXPERIENCE YET?

ALUMNI

- PAUL AMRHEIN**, One Chelsea Terrace, E. Boston, MA 02128. Paul is currently in his second year formation of the Franciscan Friars. He is a 1977 graduate.
- ED APPLEQUIST**, Rt. 3 Box 366, Center, TX 75935. Ed is married and has no children. He has been self employed the past 9 years as a consultant forester. Ed is a 1967 graduate.
- KATE BERRY**, 913 W. Mountain, Fort Collins, CO 80521. Kate graduated in 1979, she is currently finishing her masters in watershed science. Kate is married (to Stephen Wathen) and has no children.
- DAN BINKLEY**, Box 4986, Durham, NC 27706. Dan graduated in 1977. He has been employed by Duke Univ. for 3 years and currently holds the position of professor in the school of forestry.
- BILL BISHOP**, P.O. Box 182, Flagstaff, AZ 86002. Bill is a 1972 graduate, and has been employed with the Flagstaff Fire Dept. for 11 years. He currently holds the position of firefighter/medic.
- BEN G. BLACKWELL**, 311 Bonito, Flagstaff, AZ 86001. Ben is married with no children. He is currently on staff with Campus Crusade for Christ. Ben is a 1975 graduate.
- STEPHEN W. BORUP**, 1805 Finch Drive, Roseville, CA 95678. Stephen is married and has 2 children; Erica 11 and Matthew 8. He has been employed by the Borden Chemical Co. for 11 years and currently holds the position of resin sales. Stephen is a 1969 graduate.
- JAMES K. BRANSON**, 1824 Meadowlark, Flagstaff, AZ 86001. James is married and has one child. He is currently employed by Southwest Forest Ind. James is a 1980 graduate.
- ALVIN R. BROWN**, 803 Wepu Trail, Flagstaff, AZ 86001. Alvin is married and has 3 children. He has been employed by the Forest Service for 9 years and currently holds the position of silviculturist/forester. Alvin graduated in 1975.
- ZANE J. CORNETT**, 328 Lake Ridge Dr., Eagle River, AK 99577. Zane is married and has no children. He is currently employed by Matanuska-Susitna Borough as a Borough Forester. Zane is a Dec. 1978 graduate with a masters.
- ANDY DANIEL**, 5055 S.W. Dawn St., Lake Oswego, OR 97034. Andy is a 1982 graduate. He is currently a law student and legal clerk.
- RICHARD DOLPHIN**, Summer address: C/O McCall Smoke Jumpers, McCall, ID 83638. Winter Address: C/O Oasis Ranger Station, SR Box 11-2, Ochopee, FL 33943. Richard is a 1980 graduate. He has been employed with the NPS for 6 years and is currently in the position of forestry Tech. in the Big Cypress National Preserve.
- BRIAN DONNER**, P.O. Box 906, Starkville, MS 39759. Brian is a 1981 graduate. He has been working for the Forest Service for 6 mos. and currently holds the position of forester.
- JOHN T. DRAKE**, 4650 Spargin Rd., Missoula, MT 59801. John is married and has 4 children. He is a 1963 graduate and has worked for the Forest Service R-1 for the past 21 years. He currently holds the position of director of recreation and lands.
- GEORGE DUDA**, 11401 Eagle Rocke N.E., Albuquerque, NM 87111. George is married and has no children. He has been employed by the Duke City Lumber Co. for 16 years and currently holds the position of forester. George is a 1968 graduate.
- DOUGLAS DUORMAN**, P.O. Box 2172, Silsbee, TX 77656. Douglas is married and has one child. He has been employed by Kirby Forest Ind. Inc. for the past 11 years and currently holds the position of supervisor leases. Douglas is a Dec. 1973 graduate.
- JAMES F. FISHER**, 3578 McMullan Rd., Wenatchee, WA 98801. James is married and has 4 children. He has been employed by the BLM for 18 years, and currently holds the position of area manager. James graduated in 1966.
- BILL FRAMENT**, 535 Vrain St., Denver, Co 80204. Bill is married and has no children. He is a 1983 graduate and is currently employed by the Colorado State Forest Service.
- MAUREEN GALLAGHER**, 210 W. Silver Spruce, Flagstaff, AZ 86001. Maureen is married and has no children. She graduated in 1976 and currently works as an environmental education program coordinator on Region-3 for the Forest Service. She has held this position intermittently for 10 years (+).
- ORLANDO GONZALES**, HC01 Box 70 E., White Bird, ID 83554. Orlando is a 1971 graduate. He is married (Bonnie Jean) and has 2 children; Michael 12 and Matthew 9. Orlando has been employed by the Forest Service for the past 12 years and he currently holds the position of supervisory forester (District silviculturist).
- J.W. HAMMOND**, RR 1 Box 80, Harlem, MT 59526. Mr. Hammond is married and has 2 children. He is a 1967 graduate, and has been working for the BIA for the past 4½ years. He currently holds the position of forest manager.
- WILLIAM R. HART**, Box 345, Young, AZ 85554. William is married and has one child. He has been employed by the Forest Service for 8 years and currently holds the position of forester. William is a 1975 graduate.
- CARL W. HAYWOOD**, 2109 Broadview Dr., Lewiston, ID 83501. Carl is married and has 4 children. He has been a self employed consultant for 6 years. Carl graduated in 1968.
- JEFFREY H. HENES**, 6534 E. Horizon Ln., Prescott, AZ 86301. Jeffrey is married and has 3 children. He has been working for Southwest Forest Ind. for 8 years and currently holds the position of general manager, Prescott woodtreating. Jeffrey is a 1972 graduate.
- RANDY HERRIN**, 6065 Grandview Heights, Tillamook, OR 97141. Randy is a 1974 graduate. He has been employed by the BLM for 8 years and currently holds the position of timber manager.
- BRUCE HOLMSON**, P.O. Box 1390, Trokee, CA 95734. Bruce is married and has no children. He has been employed by the Forest Service for 12 years and currently holds the position of forester on the Tahoe N.F. Bruce is a 1972 graduate.
- PAUL L. ILLINGWORTH**, 18549 Carlton Ave., Castro Veuem, CA 94546. Paul is married and has 2 children. He has been employed with Bay Area Christmas Tree Farms for 7 years and currently holds the position of manager. Paul graduated in 1976.
- SUSAN JOHNSON**, P.O. Box 662, Cheyenne, OK 73628. Susan graduated in 1982 and has been employed with the Forest Service for one year. She currently holds the position of forestry tech., Black Kettles N.G.

THOMAS E. KONIUSZY, 5260 Laurel, Beaumont, TX 77707. Thomas is a 1973 graduate. He is married and has one child. Thomas has been employed as an attorney with Moore, Landrey, Garth and Jones for one year.

ADAM KOROBKIN, P.O. Box 3633, Espanola, NM 87533. Adam graduated in 1983, and has been employed by the Duke City Lbr. Co. for one year. He currently holds the position of yard and stacker foreman.

FRED LARSEN, 2221 E. Northern Lights, Suite 106, Anchorage, AK 99508. Fred is married and has one child. He has been working for the Forest Service for 19 years and is currently in the position of forest mensurationist. Fred is a 1968 graduate, with a masters.

JOSEPH DON LEMONS, 205 Walnut St., Elko, NV 89801. Joseph is married and has 2 children. He has been working for the BLM for 21 years and is currently in the position of realty specialist. Joseph is a 1968 graduate.

CARMINE LOCKWOOD, P.O. Box 64, Avery, ID 83802. Carmine is married and has one child. She is a 1981 graduate, and has been employed by the Forest Service for 4 years, currently holding the position of forester.

JERRY LOPEMAN, 106 Stallian Cl., Socorro, NM 87801. Jerry is a 1971 graduate and has worked for the Forest Service for 7 years on the Magdalena R.D. He currently holds the position of primary staff officer.

STEVE LOY, P.O. Box 521, Fredonia, AZ 86022. Steve is a 1983 graduate. He has been employed by Kaibab Ind. for 2 years and currently holds the position of forester.

JIM MATSON, 1012 E. Laguna Dr., Tempe, AZ 85282. Jim is married and has 2 children. He has been employed by Kaibab Ind. for 19 years and currently holds the position of V.P. timber resources. Jim is a 1965 graduate.

DON L. McLENNAN, P.O. Box 533, 1295 Jeanne Way, Cave Junction, OR 97523. Don is married and has 3 children; Karen 18, Janet 14, and Tom 10. He had been employed by the Forest Service for 16 years and currently holds the position of resource asst. Don is a 1967 graduate.

WENDY (WELT) McNEIL, 18222 N. 1st St., Phoenix, AZ 85022. Wendy is married and has no children. She has been employed by Motorola for 2 years and currently holds the position of parts data analyst. Wendy is a 1982 graduate.

JAMES A. MEHRWEIN, 3353 Cessna Dr., Redding, CA 96001. James is married and has 2 children. He has been employed by Mason, Bruce & Girard, Inc. for 2 years as a consultant. James is a Jan. 1970 graduate.

LARRY R. MILLER, P.O. Box 361, Prairie City, OR 97869. Larry is married and has 3 children; Kate 12, Ann 9, and Luke 6. He is currently employed as a forester for the Forest Service, and has worked for them for 16 years. Larry graduated in 1968.

MAURICE E. MITCHELL, Box 617, John Day, OR 97845. Maurice is a 1970 and 1972 graduate. She is married and has 3 children and 3 grandsons. Maurice has worked for the OSU Ext. Service for the past 5 years and currently holds the position of extension area forester.

CHARLES A. MURPHY, 2120 Robinson Ave. Apt. B, Kingman, AZ 86401. Charles is a 1983 graduate. He has been employed with Hualapai Tribal Forestry for one year and is currently holding the position of asst. forester.

JOSEPH F. MYERS, 4002 Lancaster Rd., Coeur d'Alene, ID 83814. Joseph graduated in Dec. 1975. He is married and has 2 children. He has been employed by the Forest Service for 6 years and currently holds the position of horticulturist.

JOHN C. OWENS, P.O. Box 2412, Bakersfield, CA 93303. John is married and has one child. He has been self employed for 5 years now in Real Estate and Loan Financing. John is a 1976 graduate.

ROBERT E. PARCELL, P.O. Box 3432, Missoula, MT 59806. Robert graduated in Dec. 1972. He has been working for the Missoula County Sheriffs office for 2 years and currently holds the position of sheriff deputy.

RON PARTIN, 21510 S. Cloudiview, Oregon City, OR 97013. Ron is married and has 2 children. He had been working for T.L. Beck & Assoc. for 7 mos. and currently holds the position of forest prod. consultant. Ron is a Dec. 1979 graduate.

RICHARD C. PRATHER, P.O. Box 13132, Salem, OR 97309. Richard is married and has one child. He has been employed by the BLM for 13 years and currently holds the position of area manager.

PAMELA RANDALL, NBU 454 Wheatfield Rd. #105, Globe, AZ 85501. Pamela graduated in 1976 and has been employed by the Forest Service for 7 years on the Tonto N.F., Globe R.D.

JEFF RANKIN, 13547 Spunky Canyon Rd., Saugus, CA 91350. Jeff is a 1984 graduate. He has been working for the L.A. County Dept. of Forester and Fire Warden for 4 mos. and currently holds the position of forester.

DON REIMER, 3560 Oakridge Dr., Nanaimo, Prov. British Columbia, Canada V9T1M4. Don is married and has 2 children. He has been self employed for one year as a consultant in biometrics and res. econ. Don is a 1965 graduate.

MICHAEL REUBER, RD 1 Box 50, Narrowsburg, NY 12764. Michael is married and has one child. He is a 1971 graduate and has been employed by the NPS for the past 8 years. He currently holds the position of district ranger.

ED RICHARDS, P.O. Box 1256, Navajo, NM 97328. Ed is married and has 4 children. He has been employed with Navajo Forest Products Ind. for 16 years and currently holds the position of gen. manager. Ed graduated in 1969.

FRED RICHTER, P.O. Box 75, Bridgeport, CA 93517. Fred is married and has no children. He has been employed by the Forest Service for 9 years and is currently in the position of recreation and lands officer. Fred is a 1975 graduate.

DAVID ROSS, 7298 Finns Lane, Landham, MD 20706. David graduated in 1980. He currently has been working as a freelance picture researcher/editor for 2 years.

JOHN M. ROZNOVOH, Box 1996, Kayenta, AZ 86033. John is married and has 2 children. He has been working for Peabody Coal Co. for 2 years and currently holds the position of environmental scientist. John is a Dec. 1979 graduate.

STEVEN A. SADER, 114 E. 2nd St., Long Beach, MS 39560. Steven is a 1973 graduate. He is married and has 2 children. Steven has worked for NASA Earth Resources Lab for 2 years and currently holds the position of research forester.

STEVE SAYERS, 5700 Valley Vista Dr., Kelseyville, CA 95451. Steve is married and has 2 children. He has been employed by the Calif. Dept. of Forestry for 10 years and currently holds the position of forester. Steve is a 1969 graduate.

STAN SAMUELS, Box 122, Angel Fire, NM 87710. Stan is married and has 2 children. He graduated in 1970, is currently self employed in development and has been for 11 years.

KENNETH G. SCHEIN, P.O. Box 123, Los Ojos, NM 87551. Kenneth is married and has 2 children. He has been working for the NM State Forestry for 7 years and currently holds the position of Chama district forester. Kenneth is a 1977 graduate.

JIM SCHLINGER, P.O. Box 374, Wilson, WY 83014. Jim is married and has 2 children. He graduated in 1972 and has been self employed for 14 years in construction and real estate.

RALPH J. SCHROEDER, 901 Crooked Creek, 108, Lufkin, TX 75901. Ralph graduated in 1982, is married and has no children. He is currently employed by IDS/American Express, as a financial planner, and has been for one year.

JIM SCOTT, P.O. Box 79, Crescent, OR 97733. Jim graduated from NAU in 1971. He has been employed by the Forest Service for 13 years as a resource assistant, Crescent Ranger District, Deschutes, N.F. Jim is presently not married and has 2 children; Thera (married) and Jim III 16.

JOHN W. SEE, 1301 W. 72nd Circle, Anchorage, AK 99502. John is married (Jeanne) and has 2 children; Kristen 4 and Erin 6 mos. John is a 1974 graduate and for the past 4 years has been working for the Alaska Dept. of Natural Resources, Forestry Division. He currently holds the position of asst. regional forester, southcentral region.

MICHAEL M. SHANGHNESSEY, 3507 Blackbird Dr., Sierra Vista, AZ 85635. Michael graduated in 1974 and since has been working as a forester at Ft. Huachuca. He is married and has 2 children; Ian 7 and Evan 5.

FRANK K. SMITH, Rt. 3, Box 92-5, Santa Fe, NM 87501. Frank is married and has 2 children; David 8 and Karla 5. He has been employed by the N.M. Division of State Forestry for 12 years and currently holds the position of fire management officer. Frank is a 1972 graduate.

M.A. SODJOUDEE, P.O. Box 147, College of Natural Resources, Gorgan, Iran. M.A. is a 1980 graduate, and is married with 2 children. M.A. has been a faculty member at the Univ. of Mazandaran, Iran for 4 years.

MICHAEL E. STEFANIAK, Rt. 2 Box 1770, Lakeside, AZ 83929. Michael is married and has 2 children. He has been employed by the Forest Service for 6 years and currently holds the position of forester at the Lakeside R.D. Michael is a 1975 graduate.

JOHN H. STEPHENSON, 7337 South Chris Lane, Salt Lake City, UT 84121. John is a 1963 graduate. He is married and has 2 children. John has been employed with the BLM for the past 21 years and currently holds the position of associate district manager.

KEN STOKES, Red 01 Box 5, Nine Mile Falls, WA 99026. Ken graduated in 1975, he is married and has one child. Ken is currently president of Stokes Enterprises.

ROBERT J. SUSTEK, 1102 S. Quince, Olympia, WA 98504. Robert is a 1978 graduate. He has worked for the Dept. of Natural Resources for one year and currently holds the position of system administrator.

STEVEN K. TEMPLIN, P.O. Drawer 932, Pineville, LA 71360. Steven is married (Mary) and has 2 children; Kyle 6 and Andrea 3. He is a 1979 graduate and has worked for the Davis Forestry of Louisiana, Inc. for the past 5 years. Steven currently holds the position of consulting forester/real estate broker.

BERNARD T. TSINNAJINNIE, P.O. Box 120, Wabeno, WI 54566. Bernard graduated in 1975. He has been working for the BIA for 7 years and currently holds the position of forester.

TOM TUCHMANN, 226 Highland Ave. #206, State College, PA 16801. Tom is a Dec. 1983 graduate, who is currently working on his masters in forest policy at Penn. State.

DR. GERALD A. TUSKAN, Dept. of Horticulture/Forestry, N. Dakota St. Univ., Fargo, ND 58105. Gerald is married and has 2 children. He is a Dec. 1978 graduate and has been employed by the N. Dakota St. Univ. for 4 mos. He currently holds the position of Assist. Professor forest genetics.

DONALD A. VAN DRIEL, 2925 W. Tonto St., Apache Junction, AZ 85220. Donald is married and has 3 children. He has worked for the Forest Service for 21 years, and currently holds the position of district ranger, Mesa. Donald graduated in 1964.

STEVEN A. WALKER, 2009 Valdez Dr., Lafayette, IN 47905. Steven graduated in 1979 and is currently employed by Pretsker and Associates, Inc.

STEPHEN WATHEN, 913 W. Mountain, Fort Collins, CO 80521. Stephen graduated with a masters in 1978. He currently has a photography business. Stephen is married (Kate Berry) and has no children.

SANDY GEIB WEAVER, P.O. Box 2042, Sandpoint, ID 83864. Sandy is married and has no children. She is a 1976 graduate, and has been self employed as a newspaper publisher for the past four years.

TOM WEBER, 639 Nightingale Blvd., Stillwater, MN 55082. Tom is married and has 2 children. He has been working for SCS for 12 years and currently holds the position of asst. state admin. officer. Tom is a 1972 graduate.

CHARLES P. WICKLUND, P.O. Box 578, Espanola, NM 87532. Charles is a 1965 graduate and has been working for the Duke City Lumber Co. for 16 years, currently holding the position of plant manager.

MICHAEL D. WILSON, 5839 E. Burns St., Tucson, AZ 85711. Michael is married and has no children. He has been employed with Ratliff Aero for 2 years and currently holds the position of a pilot. Michael is a 1978 graduate.

MIKE WINTERS, Box 683, Freeampment, WY 82925. Mike graduated in 1971, and has been employed by the Forest Service for 4 years. He currently holds the position of sale prep forester, Hayden District, Medicine Bow N.F.

BOB WITHROW, 3707 Sunset Way #8, Longview, WA 98632. Bob is a 1971 graduate and currently works as a child protective soc. worker and WA dept. soc. health succs.

JAMES A. YOUTZ, P.O. Box 22216, Flagstaff, AZ 86002. James is a 1983 graduate and is currently employed by the AZ State Land Dept., Forestry Division Flagstaff District Office.

**You have to
go a long way
to save a
tree in your
own backyard.**

As a Peace Corps volunteer,
you could help stop the
deforestation that is affecting
the world's environment.

The Peace Corps trains
volunteers with forestry
degrees or experience. Call
toll-free 800-424-8580.
And put your experience
to work where it can do a
world of good.

U.S. Peace Corps.
The toughest job
you'll ever love.



ANTCO, INC. dba

LOGGERS SUPPLY SERVICE

620 E. Butler Avenue
Flagstaff, Arizona 86001
602 / 779-2211 or 774-2596

**SALES SERVICE & PARTS
FOR ALL YOUR
SMALL ENGINE NEEDS**



CIRCLE "Q"
1716 E. SANTA FE
774-4672

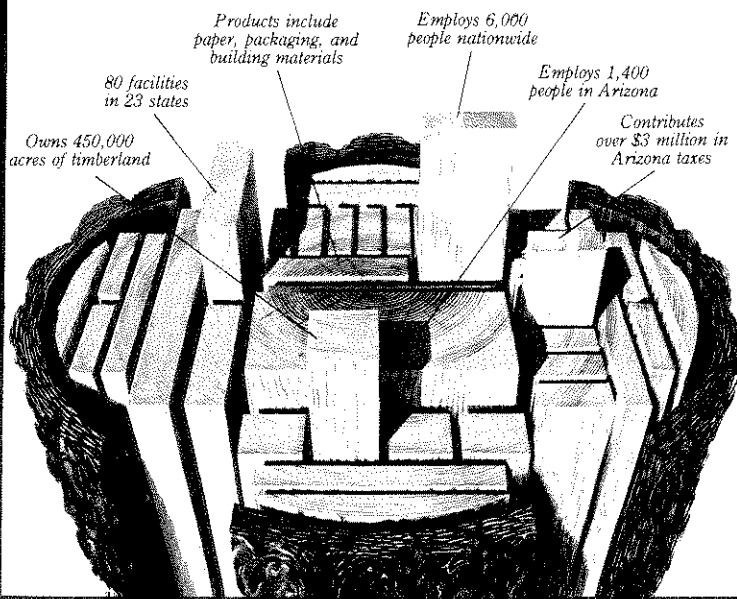
BAR-NONE
1922 N. FOURTH ST.
526-0274

FLAGSTAFF, ARIZONA
86001

**BOB & MARGOT
CHILDERS**

Southwest Forest Industries.

An inside look at one of Arizona's Fortune 500 companies.



We're Southwest Forest Industries. We manufacture and sell paper, packaging, and building materials throughout the United States.

In Arizona, we keep 1,400 people working. Add \$35 million annually to Arizona's economy through employee wages. And contribute over \$3 million in Arizona taxes.

We're headquartered in Phoenix, with major plants making newsprint and linerboard at Snowflake, corrugated boxes at Glendale, and lumber at Flagstaff and Eagar.

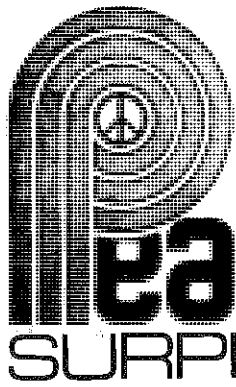
Nationwide, we employ over 6,000 people at some 80 facilities in 23 states. And we own more than 450,000 acres of timberland.

If you would like to know more about a Fortune 500 company with corporate headquarters in Arizona, send for our annual report.

Simply write to: W. A. Franke, President, Southwest Forest Industries, 6225 N. 24th Street, Phoenix, Arizona 85016.



Southwest Forest Industries
QUALITY PRODUCTS FROM RENEWABLE RESOURCES.



CAMPING
CLOTHING
SURPLUS

CHECK OUR PRICES

OPEN
EVENINGS

'TIL

8:00

SUNDAYS-

9:00

5:00

14 W. SANTA FE FLAGSTAFF 779-4521

JELD-WEN INC.

825 E. BUTLER ST.
FLAGSTAFF, ARIZONA

P.O. BOX 1016

Gene's

SHOE HOSPITAL



- * Expert Boot & Shoe Repair
Vibram Soles
- * Bailey - Resistol & Stetson
Hats
- * Wrangler — Levi & Lee
Jeans and Jackets
- * Boots for the Entire Family

774-3543

111 N. Leroux • Downtown Flagstaff

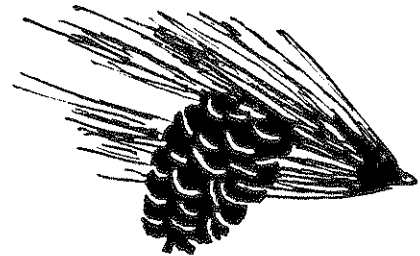
MANUFACTURES OF:

WINDOW AND DOOR PRODUCTS

JX-7

WINDOW FRAMES

DOOR FRAMES INSIDE JAMBS



Ponderosa

PAPER PRODUCTS

PONDEROSA IS CONCERNED

ABOUT YOUR ENVIRONMENT

PAPER PRODUCTS FROM RECYCLED MATERIALS

P.O. BOX JJ FLAGSTAFF, ARIZONA 86001 PHONE: (602) 774-7375

PEABODY COAL COMPANY

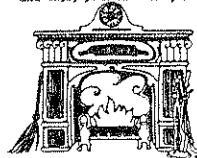


NiMARCO PIZZA INC.

101 South Beaver

779-2691

INSIDE DINING
Come sit by the fire
and enjoy your favorite pizza!



"We sell the best and service the rest"



Flag Loggers Supply

1865 E. Butler Ave., #A • Flagstaff, AZ 86001
(602) 774-8300

JIM & DESI BUELL
Owners

Authorized Sales & Service
For Husqvarna, Echo
and McCulloch Chainsaws

Some forestry basics cannot be bought.

The basics you'll use in your forestry career cannot be bought. They were given to you: your hands, your eyes, your mind.

You develop these basics through education and experience. And you supplement them with man-made tools.

That's where **Forestry Suppliers, Inc.** fits in. The tools we sell make it easier for you to develop the basics you were given.

Team up your basics with our tools for your success.



Forestry Suppliers, Inc.

205 West Rankin Street
Post Office Box 8397 - Jackson, Mississippi 39204

1-601-354-3565

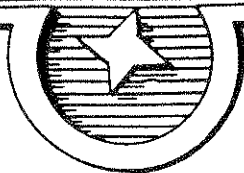
Crystal Creek

SANDWICH

Company

1051 SOUTH MILTON
Next to Pic Quic
774-9373

IONE STAR BAR-B-QUE



*four south san francisco street
flagstaff arizona*



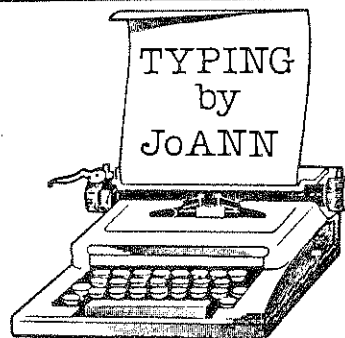
WIDE SELECTION OF LIQUORS & WINE
COLD BEER - ICE
GROCERIES
FISHING BAIT
COME TO US FOR
YOUR PICNIC SUPPLIES
FINE ADDED & ARMED

PIC QUIC MARKET

7AM - 12 Midnight
7 Days a Week

774-0121

1051 Milton Road Flagstaff



779-3447

- TERM PAPERS & MANUSCRIPTS
- THESES-DISSERTATIONS
- RESUME SPECIALISTS
- BUSINESS TYPING
- COPIES

WORD PROCESSING

PROVEN EXCELLENCE AND EXPERIENCE

101 S. SITGREAVES
(Across from Granny's) FLAGSTAFF