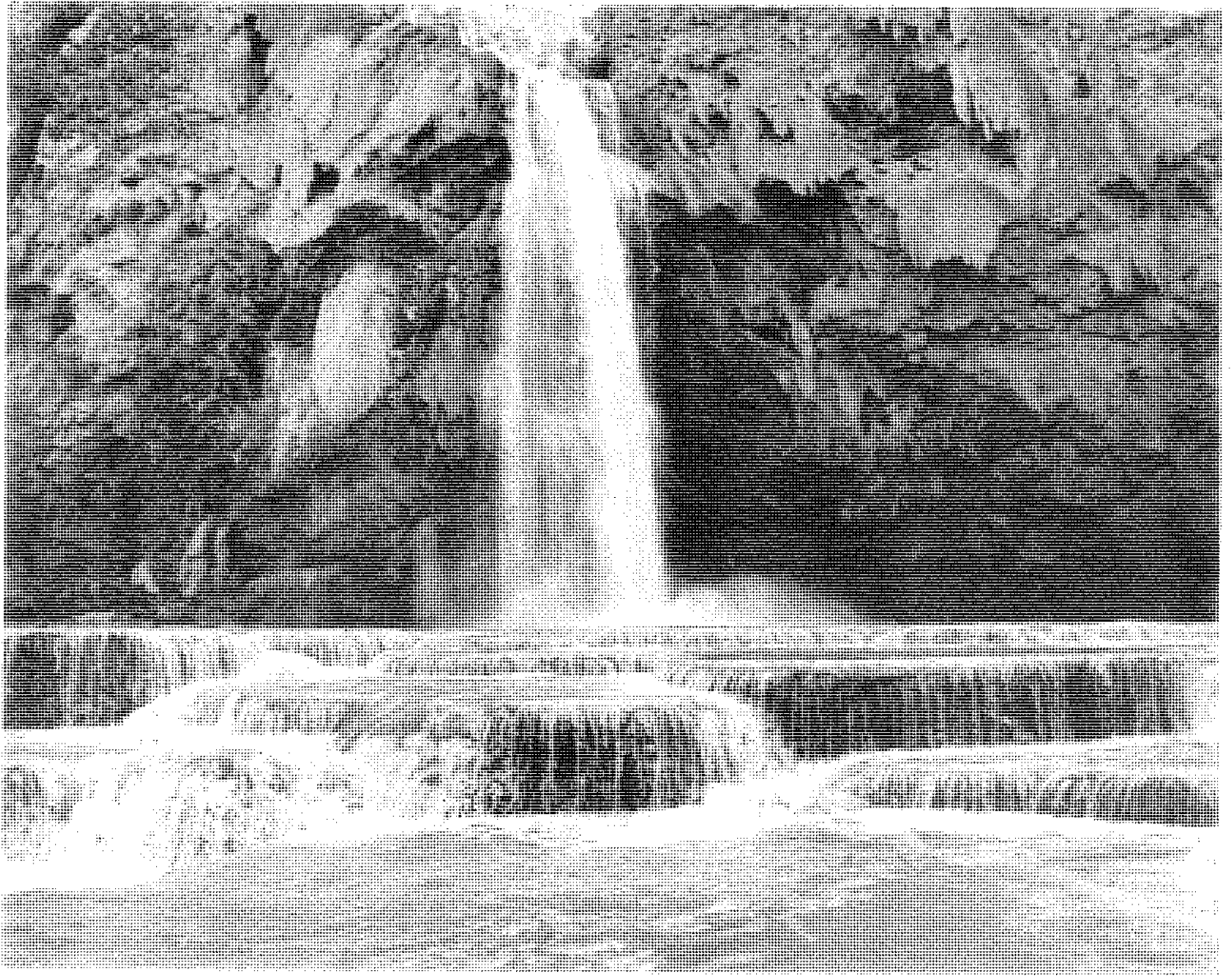


# *Annual Yield 1988*



Northern Arizona University  
School of Forestry



PUBLISHED BY  
NORTHERN ARIZONA UNIVERSITY FORESTRY CLUB  
STUDENT CHAPTER SOCIETY OF AMERICAN FORESTERS  
● FLAGSTAFF, ARIZONA ●  
1988

Advertising.....Joe Hiss  
Ted James

Printing.....Major Air

Typesetting.....Major Air

Alumni Editor.....Kevin Gericke

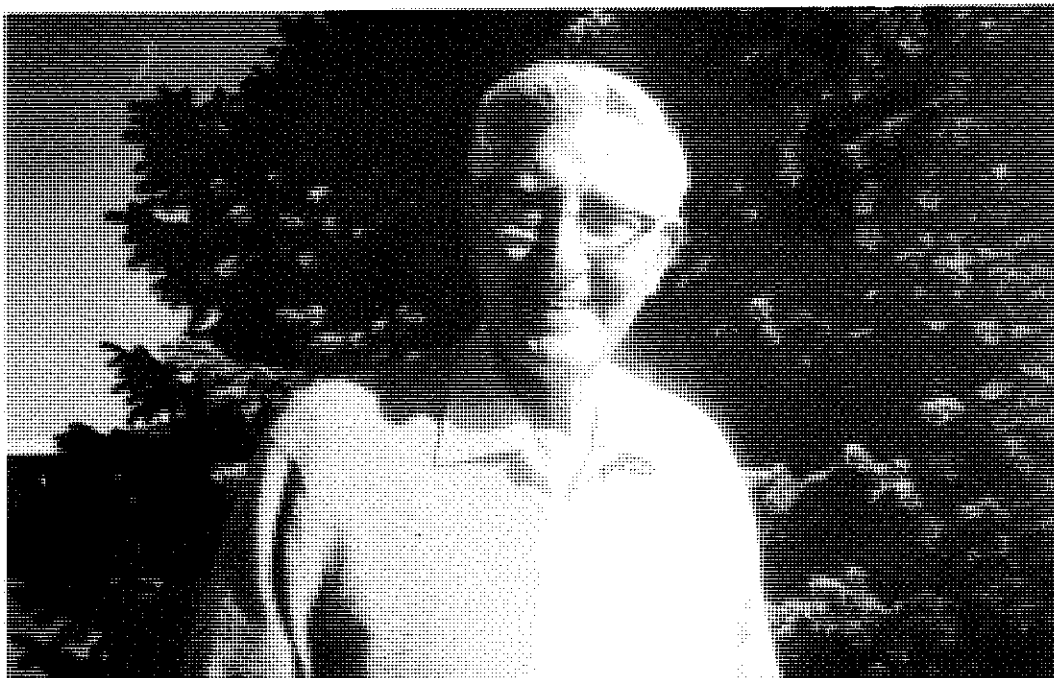
Editor.....Kevin Gericke

Layout.....Kevin Gericke  
Major Air

Special Thanks To: Pete Bukowski  
Emily Honnell  
Jenifer Nelson  
Robert Ong  
Jerry Welch

Photographers: R. W. Behan  
Pete Bukowski  
L. D. Garrett  
Emily Honnell  
Mark Kerrigan  
E. Kurmes  
Jenifer Nelson  
Robert Ong  
Casey Oppen  
D. Patton  
Annette Pintado  
M. T. Richards  
Scott Spleiss  
Jerry Welch  
Kensuke Yasumura

Writers: Pete Bukowski  
Kevin Gericke  
Pam Wagner  
Jerry Welch



#### DEDICATION

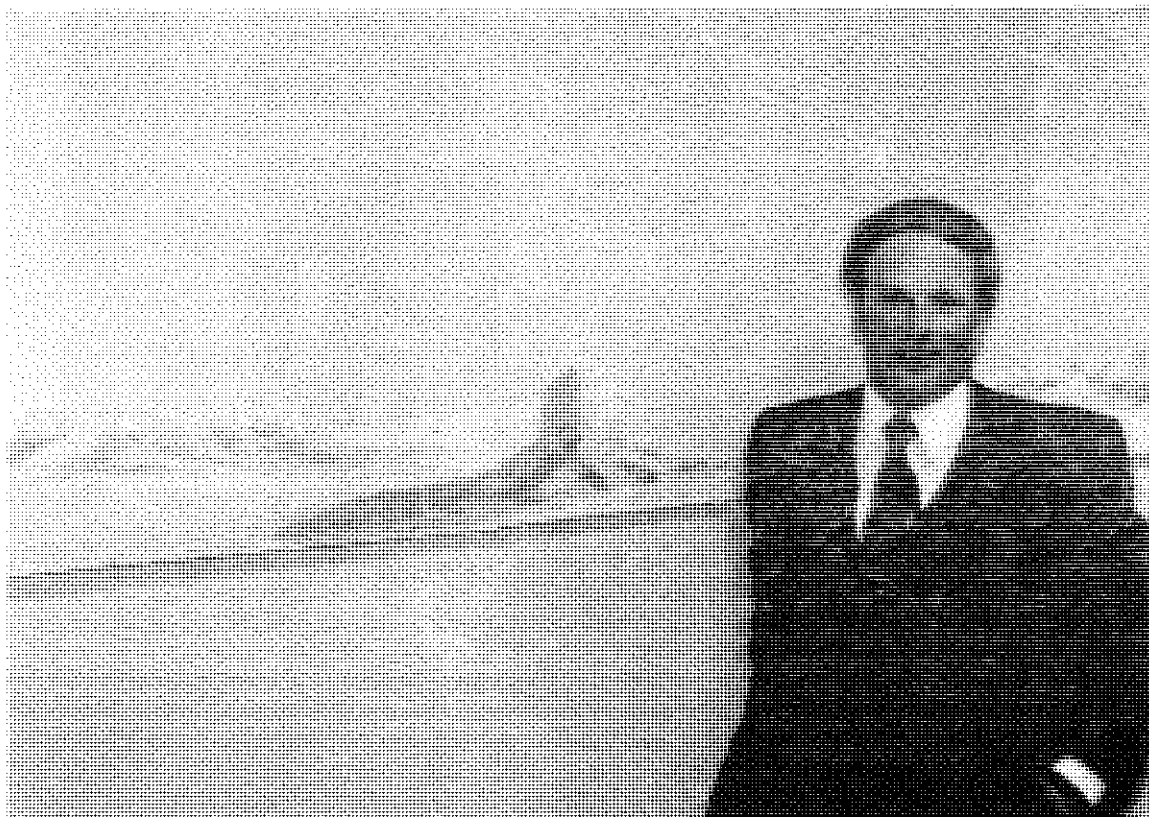
Charles O. Minor

The Forestry Club of 1987-1988 proudly dedicates this year's issue of the Annual Yield to Dr. Charles Minor (or Chuck as he is more commonly known). Chuck has had, and continues to have, a profound impact on the Northern Arizona University School of Forestry. Thirty years ago, he arrived in Flagstaff and founded the Division of Forestry at Arizona State College (as NAU was then known.) The first students were enrolled in September, 1958. The staff of the Division grew to two members in February, 1959; then to six members in September, 1959. The Division moved to the Forestry Building in February, 1962. Finally, the division was officially recognized as the School of Forestry on July 1, 1963.

The School of Forestry received its first accreditation in 1968 under Chuck's leadership, who was the School's Dean until 1979. This rapid growth in the earliest, and most important, years is evidence of Chuck's abilities as a professional forester and administrator.

Chuck is probably best known to alumni, however, as a teacher with a genuine interest in his students. He presents his professional skills in an easy-going manner. His joyful chuckle can be heard from his office, whose door is always open. Chuck continues to be an outstanding figure among foresters. His interests are in mensuration, aerial photography, and forest management. He has published numerous research works in these fields in Arizona, Louisiana, and Texas. His initiative brought the San Francisco Peaks Chapter of the SAF into existence.

It is with great pride and appreciation that the Forestry Club and the School of Forestry salute Chuck with this edition of the Annual Yield.

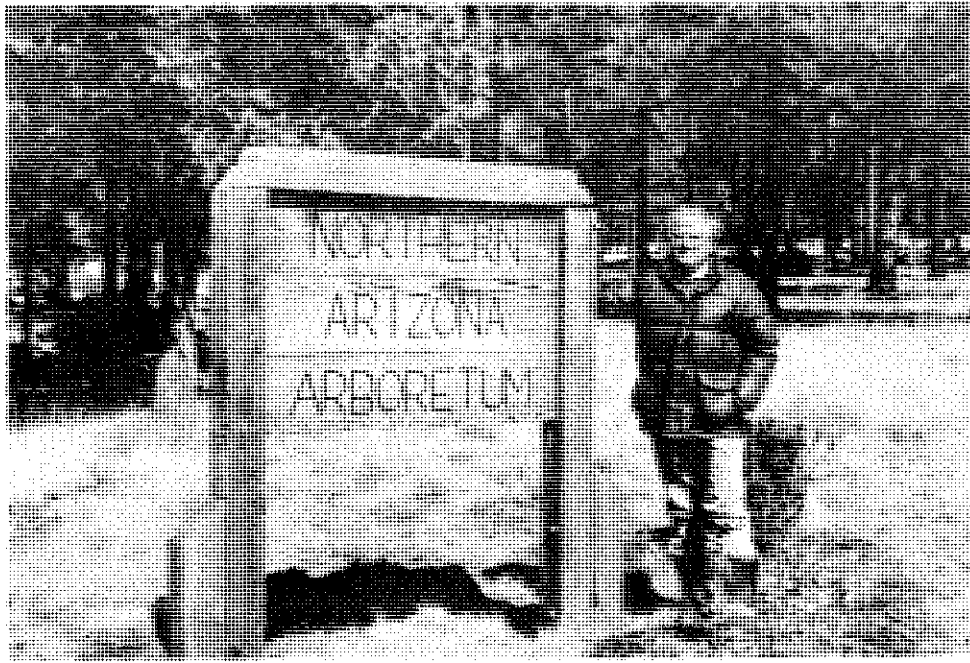


#### A Comment on Progress

I am particularly proud to comment this year on "our" progress. "Our" includes all of us: students, alumni, faculty, staff, and our many supporters. We are putting into place not just physical structure and programs, but enthusiasm, pride and dreams. "Our" efforts will create a School of Forestry whose alumni, students and faculty will make a difference in how our profession is practiced.

In many ways, our dreams as a faculty reside in our students and alumni. It is through your efforts individually and collectively that our profession will be nurtured and grow, and that this school will accomplish its goal. It is important that we work together in these efforts, and I am proud to say that I see more progress every year.

Efforts on the part of the students to produce this publication, maintain an active Forestry Club, SAF Chapter, Sigma Pi Chapter and many other activities, demonstrate their commitment to progress. That enthusiasm and willingness to dream of, and work for programs will make the NAU School of Forestry the Center of Forest Science in the Southwest.



### THE NORTHERN ARIZONA/SCHOOL OF FORESTRY ARBORETUM

Throughout its 19-year history, the Northern Arizona/School of Forestry Arboretum has been a place where students and others have had the opportunity to learn about and enjoy many species of exotic plants and trees. The Arboretum is an "outdoor laboratory" that contains well over 500 woody plants and serves many purposes ranging from scientific research to a place where one can leisurely enjoy its aesthetic values.

The Arboretum was established in 1969 through the joint efforts of the School of Forestry, Northern Arizona University, the Rocky Mountain Forest and Range Experiment Station, and the Coconino National Forest. "Dr. Minor asked if I would be interested in helping to start an Arboretum," said Dr. Donald Wommack, "I agreed, and after a meeting with the other parties involved, we brought the idea to reality." It currently occupies 2 acres of aesthetically appealing forest land about 12 miles north of the NAU campus at the base of the San Francisco Peaks.

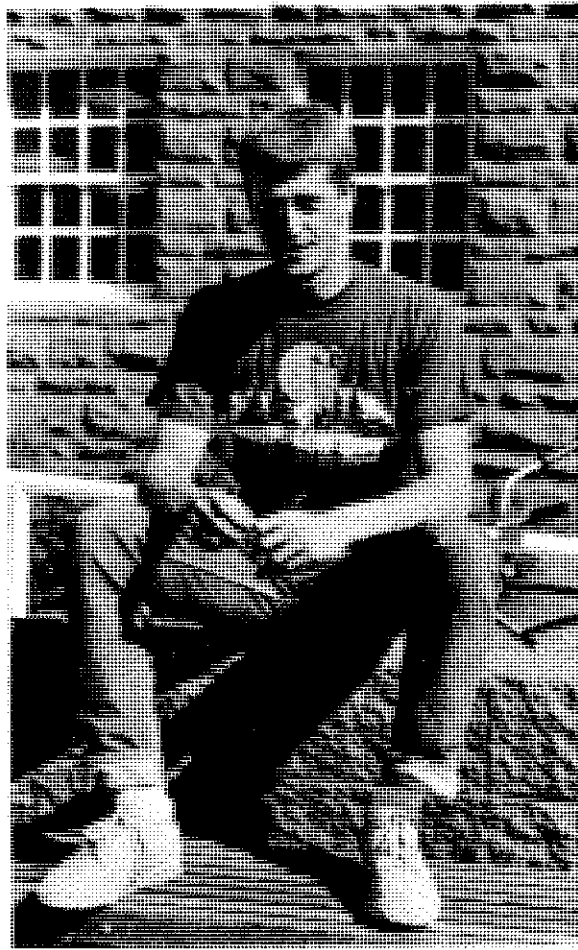
Under the direction of Don Wommack, the first seedlings were planted in 1972. Today the Arboretum has over 160 different species that are about equally divided between angiosperms and gymnosperms, representing 53 genera in 20 different families of plants. This collection includes specimens from China, Northern Morocco, Japan, Austria, the Himalayas, Mexico, and the United States. It contains 35 species of pine alone! "Soon we will be adding 20-25 new specimens of pines," said Wommack.

Expansion and development at the Arboretum is far from over. Future plans include doubling the number of presently established seedlings, developing self-guided tours, intensifying efforts to protect plants from animal damage, increasing accessibility to a greater number of visitors and constructing on-site nurturing facilities.

Those who frequent the Arboretum include private individuals, groups, garden clubs, wildflower and native plant societies, university classes, and professional forestry and arboreta personnel. Through the volunteer efforts of many dedicated individuals, primarily forestry students and alumni, the Arboretum has been a "growing success." Wommack says, "As those interested in this beautiful area continue to support it, the Arboretum will continue to expand in variety and usefulness to the community."

-Peter Bukowski





#### **PRESIDENT'S MESSAGE**

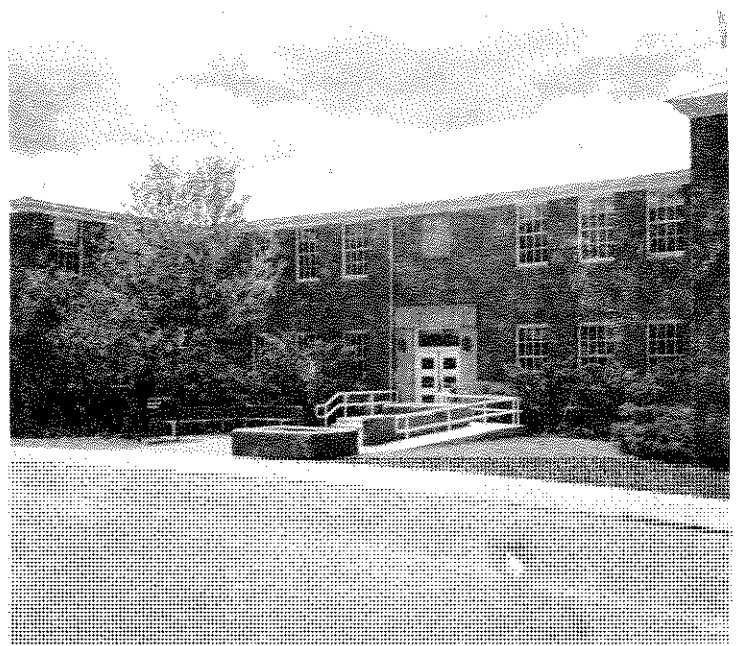
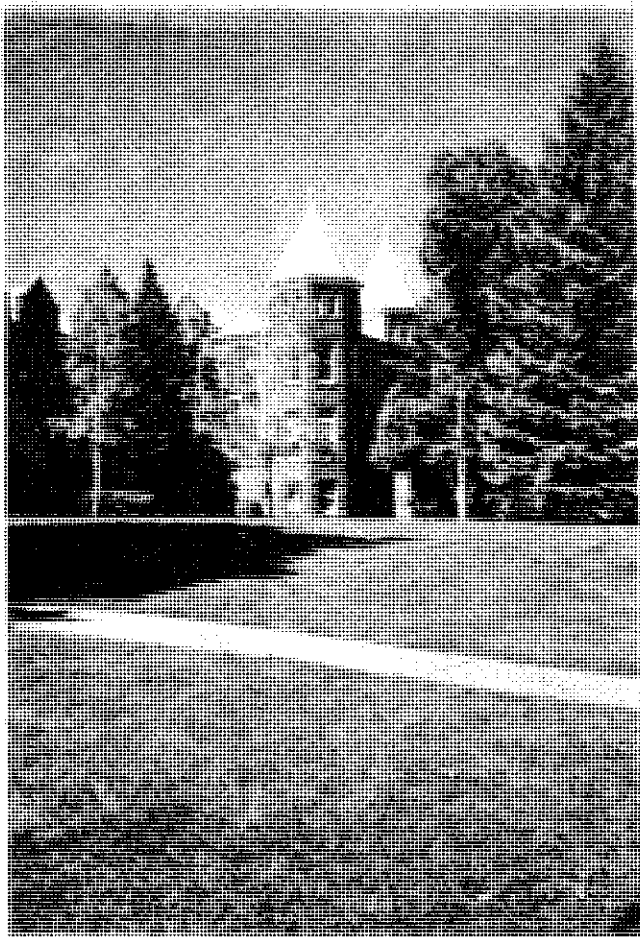
The Forestry Club provides a unique opportunity for its members to meet and interact with faculty and professionals. Through this interaction with professionals in the field, the students gain a better understanding of job opportunities, the qualities employers look for, and the development of a professional attitude towards forestry.

This year the club was in a rebuilding stage. What started out as a slow, troublesome year turned out to be a quite impressive year for the Club. With a strong Executive Council, we were able to complete a variety of social and fundraising events. This year the Constitution was amended after many conflicts were resolved, the Annual Christmas party was a smash at the American Legion post, plus a variety of other parties. In addition, the Club took part in slash burns, range improvement projects, and thinning projects. This was a way for many to gain experience in forest activities and raise funds for future use.

The interest in the Club varies from year to year. It is crucial that students get involved in the Club while they are in their Freshman and Sophomore years. Much improvement has been made in this area, yet there is still more involvement needed. This will make for a stronger and more impressive Club.

The existence of the Forestry Club is dependant upon the students of the School. I hope that in years to come, the Club will grow and become a strong organization to represent both NAU and the School of Forestry. Many thanks goes out to all those who have helped make this a successful Forestry Club!

**Joe Hiss  
President**



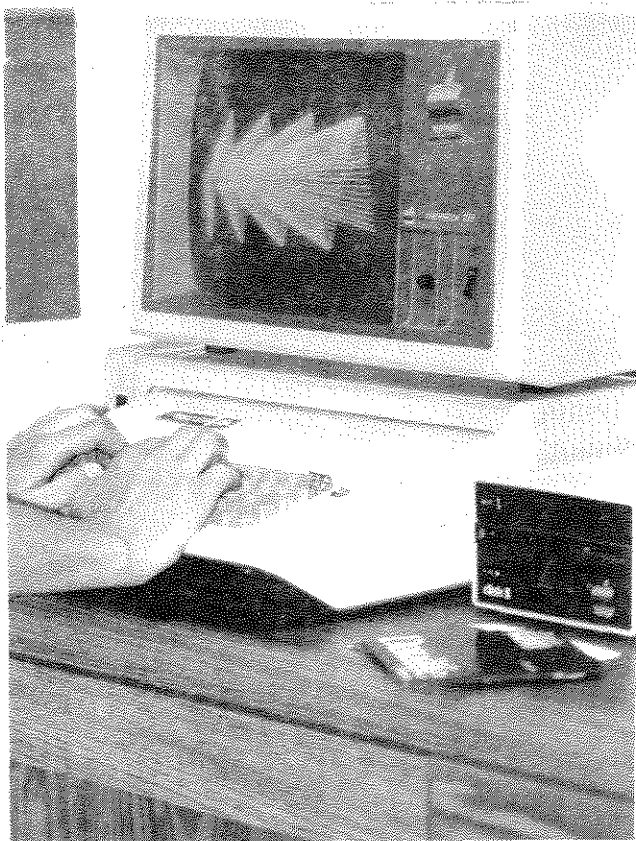
## School of Forestry

The Northern Arizona University School of Forestry, in Flagstaff, Arizona, is ideally located for the study of forest management. Nearby facilities include the oldest experimental forest in the U.S., the largest continuous ponderosa pine forest in the U.S., famous recreational areas, large sawmills, a modern pulpmill, a school forest, a school arboretum, outstanding watershed research facilities, and extensive grazing areas.

In 1972, the School of Forestry implemented an undergraduate program which was unique in its study of multiple-resource management. This program continues to offer students with an exceptional education of multiple-resource management. Students are admitted to the program in their junior year. During the Fall semester, "Semester A," the student spends numerous hours in the field. Emphasis is on the biology of the forest ecosystems and resource evaluation. During the Spring semester, "Semester B," the student spends many hours in the classroom learning about resource management techniques and economics. Finally, during the Fall semester of the senior year, "Semester C," the student applies the knowledge of the previous two semesters in the development of a multiple-resource management plan. This is accomplished with the aid of optimization and simulator computer models (combined to form the Terrestrial Ecosystem Analytical Modeling System [TEAMS]). Graduate studies are also available at the School. Both traditional thesis and a new non-thesis multiple-resource management options are available.

Renovation of Friar Hall was completed for the Fall semester, 1985. New furniture, large lecture rooms, and an improved computer room have brought comfort and convenience to the students and faculty of the School.

-Kevin Gericke



### TEAMS: HELPING STUDENTS UNDERSTAND MULTIRESOURCE MANAGEMENT

For three years students at Northern Arizona University's School of Forestry have had the opportunity to use computers to aid in understanding integrated multi-resource management.

After many years of research, the School of Forestry has developed a decision support system to aid students and land managers in understanding and analyzing multi-resource interrelationships as they occur on a site-specific level. This decision support system is called TEAMS for Terrestrial Ecosystem Analysis and Modeling System.

TEAMS was developed using a modular approach so that it can, and in fact is, continually being revised. TEAMS is composed of: (1) a relational database management system; (2) a multi-resource simulation model; (3) economic algorithms for evaluating treatment costs and resource outputs; (4) a constrained optimization model; (5) a graphics output package; and (6) the software to control the flow of information among the other modules.

This computer model is being used by both the undergraduates enrolled in the professional program and the graduates enrolled in the non-thesis option. TEAMS is being used outside of the academic arena by the Navaho Forestry Department to provide a system for managing 20,000 acres of Navaho Nation lands. TEAMS is also used by the U.S. Forest Service on a 10,000 acre block of land on the Blue Ridge Ranger District of the Coconino National Forest.

TEAMS is very versatile in that it can be useful outside the realm of forestry. With the replacement of the simulation and economic algorithm modules, a business decision support system can be developed.

-Peter Bukowski

# FACULTY

**CHARLES C. AVERY**  
Professor of Forestry

B. S. Utah State University 1961  
Certificate French National School of  
Forest and Waters 1962  
M. F. Duke University 1963  
Ph. D. University of Washington 1972  
Forest Hydrology  
Watershed Management  
Environmental Conservation



**RICHARD W. BEHAN**  
Professor of Forestry • Dean Emeritus

B. S. F. University of Montana 1957  
M. S. F. University of Montana 1960  
Ph. D. University of California 1971  
Resource Policy



**W. WALLACE COVINGTON**  
Professor of Forestry

B. A. North Texas State University 1969  
M. S. University of New Mexico 1972  
Ph. D. Yale University 1976  
Forest Ecology  
Fire Management



**TIM CRAIG**  
Instructor

B. S. Kansas State University 1980  
M. S. Northern Arizona University 1984  
Ph. D. Northern Arizona University 1987  
Forest Entomology  
Insect Behavior



**DENNIS P. DYKSTRA**  
Associate Professor of Forestry

Dennis Dykstra joined the NAU faculty in mid-1986 as a specialist in management science and timber harvesting. A native of Oregon, he holds a B.S. in forest engineering from Oregon State (1966), an M.B.A. in managerial economics from the University of Oregon (1971), and a Ph.D. in industrial engineering (operations research) from Oregon State (1976). His teaching and research experience includes six years at Oregon State, two years at Yale, three years at the University of Dar es Salaam in Tanzania (East Africa), and two years at the International Institute for Applied Systems Analysis in Laxenberg, Austria. He has had extensive international experience, having served as a United Nations consultant on forestry problems in Africa, Southern Europe, Southeast Asia, and the Caribbean. He is active in the International Union of Forestry Research Organizations, and is a member of the Editorial Advisory Board of the international journal *FOREST ECOLOGY AND MANAGEMENT*. He has published more than 100 papers and articles, and is perhaps best known for his book, *MATHEMATICAL PROGRAMMING FOR NATURAL RESOURCE MANAGEMENT* (McGraw-Hill Book Company, 1984). He is also co author and editor of a new book entitled *THE GLOBAL FOREST SECTOR: AN ANALYTICAL PERSPECTIVE* (John Wiley & Sons, 1987). At NAU he teaches timber harvesting and multi-resource management science, serves as coordinator of the new non-thesis program in multi-resource management, and is actively involved in the School of Forestry's interdisciplinary research program.



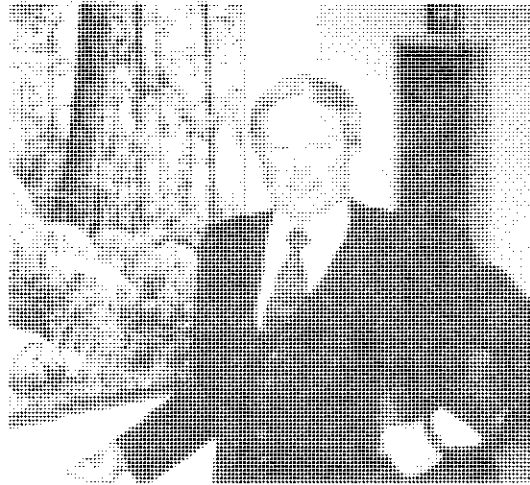
**BRUCE E. FOX**  
Assistant Professor of Forestry

Bruce Fox was born and raised in the San Francisco Bay Area, educated at the University of California at Berkeley (B.S. in Forestry; Master of Forestry; B.A. [almost] in political science) and at the University of Michigan (Ph.D. in forest policy and economics). Bruce arrived at the School of Forestry in 1985. Before Flagstaff, he spent summers falling timber and setting chokers, marking and cruising timber, teaching at forestry camps at Berkeley and Michigan, and working for the U.S. Forest Service in Washington, D.C. In addition, Bruce worked for 5½ years for Champion International Corporation in South Carolina in staff positions and as a field forester in charge of over 65,000 acres of Piedmont land. Here at NAU, he teaches policy, management and economics to both undergraduate students, and will be the coordinator of Semester C beginning in the Fall of 1988. Current research interests include the forest products industry and the management of pinyon-juniper.



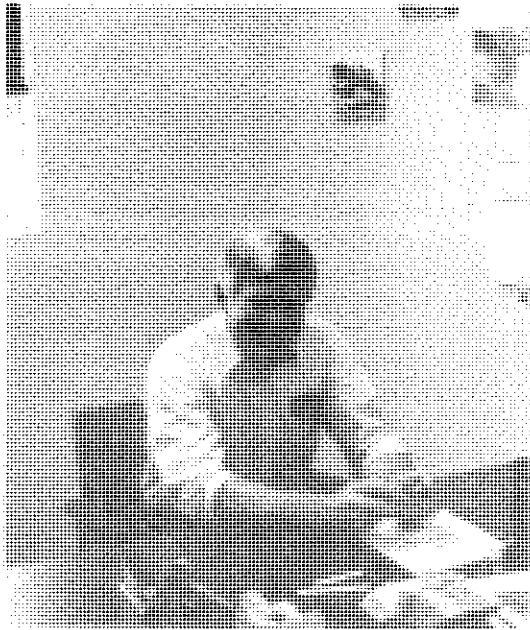
LAWRENCE D. GARRETT  
Dean of School of Forestry

B.S. Southern Illinois University 1963  
M.S. Michigan State University 1965  
Ph. D. Michigan State University 1975  
Multi-resource Management  
Forest Economics



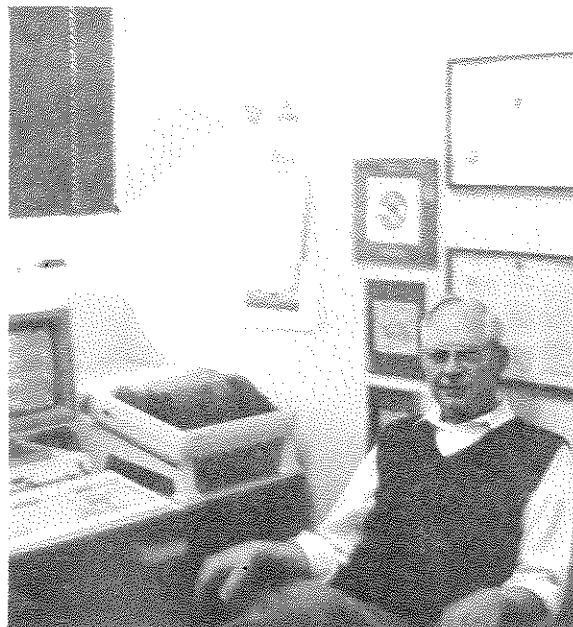
CHARLES C. GRIER  
Professor of Forestry

Dr. Grier came to the NAU School of Forestry in August, 1985. He received his B.S.F. from the University of Washington (1968) and his Ph.D. from the University of Washington (1972). He was a member in the U.S. Army Special Forces from 1956 to 1965. He has also worked in Washington, Idaho, and Alaska participating in logging and mining activities. He was a faculty member at Oregon State University and University of Washington before accepting his position at NAU. He has published numerous articles and his research interest is in the factors which influence the productivity of forest ecosystems



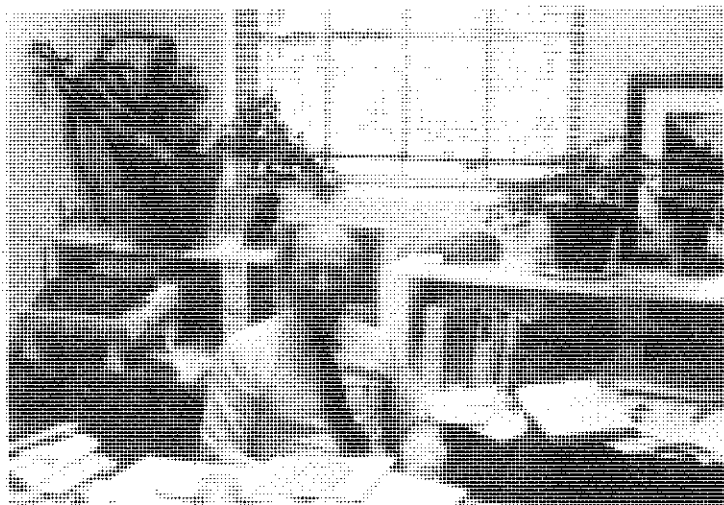
WILLIAM A. GROMAN  
Associate Professor of Forestry

B.S.F. Penn State University 1953  
M.F. Oregon State University 1969  
Ph. D. Oregon State University 1972



**BILL HOLMES**  
Lecturer

B. S. F. Colorado State University 1950  
Resource Management  
Paraprofessional



**EARNEST A. KURMES**  
Professor of Forestry

B.A. Lehigh University 1953  
M.S. Yale University 1957  
M.F. Yale University 1958  
Ph. D. Yale University 1961  
Silvics  
Siliculture

**ROBERT E. LARSON**  
Associate Professor of Forestry

B.A. University of Colorado 1966  
M.S. University of Colorado 1968  
Ph. D. Colorado State University 1976  
Wood Technology  
Wood Utilization



**ROBERT MATHIASSEN**  
Adjunct Professor of Forestry

B.S. California State College 1972  
M.S. Colorado State University 1974  
Ph. D. University of Arizona 1977  
M.A. Northern Arizona University 1984

Forest Pathology  
Forest Measurements



**JOHN PAUL McTAGUE**  
Assistant Professor of Forestry

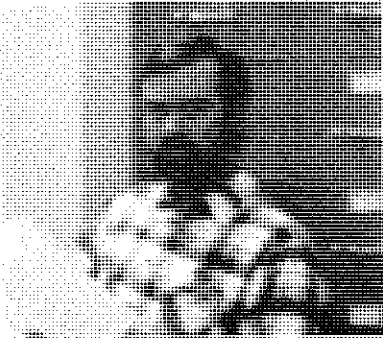
Originally from New England, John Paul lived over ten years in Brazil where he attended high school and later worked. He obtained his B.S. in Forestry from the College of Forestry at Syracuse University and continues to be an intense Orangemen fan. Later he pursued a M.F. in Forest Economics at Yale University. In 1976, he worked for Manville Forest Products Ltda. in southern Brazil where he was responsible for forest research in the areas of tree improvement, growth and yield studies, and establishment of energy forests. In 1981 he returned to the United States to continue his studies in Forest Biometrics at the University of Georgia. Currently, John Paul can be found on the tennis courts when he is not occasionally distracted by teaching research interests at the NAU School of Forestry.

**CHARLES O. MINOR**  
Dean Emeritus  
Professor Emeritus of Forestry

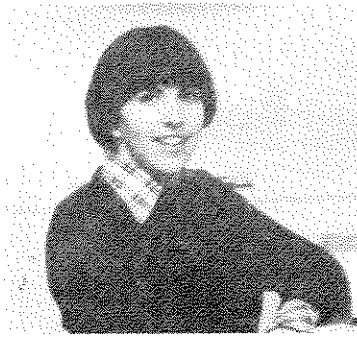
B.S.F. Iowa State University 1941  
M.F. Duke University 1942  
Ph. D. Duke University 1958  
Forest Measurements  
Forest Management



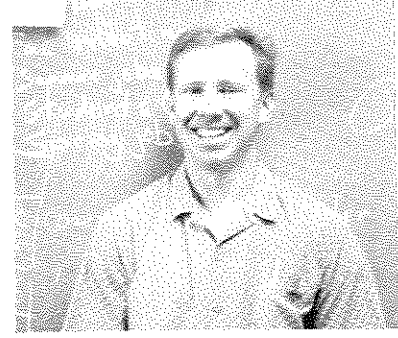
# STAFF



**STEVE ANDARIESE**  
Research Asst. III



**LIZ BLAKE**  
Lab Tech IV



**CHUCK BULLINGTON**  
Program Coord. I



**MARY HINES**  
Secretary III



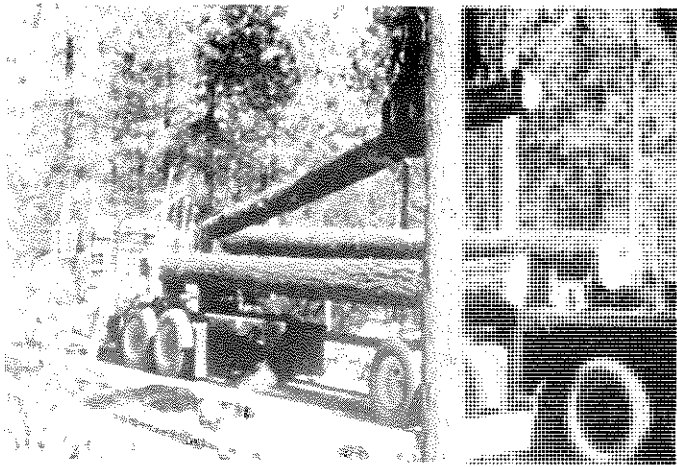
**INEZ LIGHT**  
Secretary II



**GISELA McCORMICK**  
Admin. Asst. II



**LARRY YOUNG**  
Research Asst. III



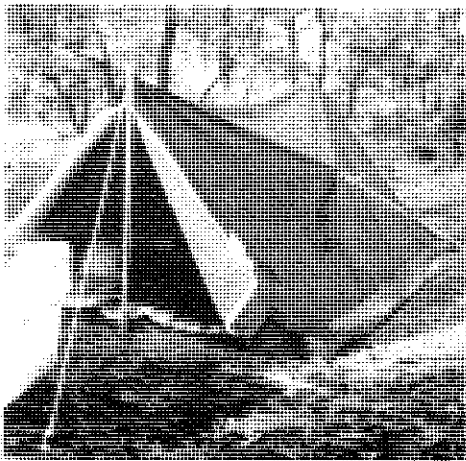
## FORESTRY GRADUATE STUDIES

Currently, students wishing to extend their education beyond the undergraduate level may choose from two programs of graduate studies at the NAU School of Forestry. Both lead to a Master of Science in Forestry. The first program is a traditional thesis option with both course work and a detailed, original research project required. This program normally requires two years to complete.

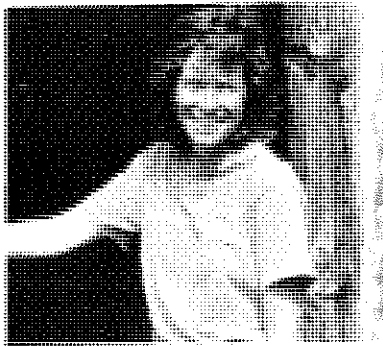
The second program is a non-thesis option. It is comprised of course components which are one week, three weeks, four months, and eight months in duration. During the one week segment, students are introduced to basic concepts and procedures of multiple-resource management. The three week segment presents a more detailed analysis of multiple-resource concepts and theories. Both of these segments are part of the four month semester, which includes extensive studies of these concepts and case studies taught by interdisciplinary faculty teams. The second semester studies the complex theories and problem solving using multiple-resource management concepts, analytical tools, and communication skills.

In addition to these segments, students are required to take courses in linear algebra and introductory differential calculus, statistical methods, public administration, and natural resource policy. The program culminates in a special summer project involving analysis of a real land management problem. This practicum requires evaluation of the issue, description of alternatives, and proposed action. These two programs of graduate study increase the quality of education presented by the School of Forestry.

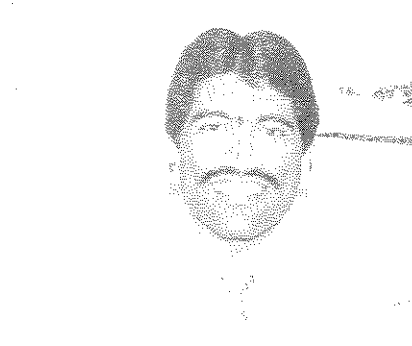
Kevin Gericke



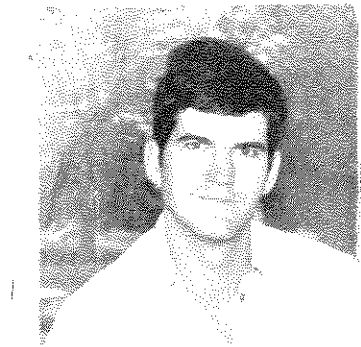
# GRADUATE STUDENTS



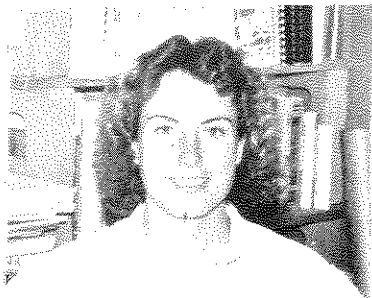
**PEG ABBOTT**



**CHAN BHOOPAL**  
MBA/Wood Products



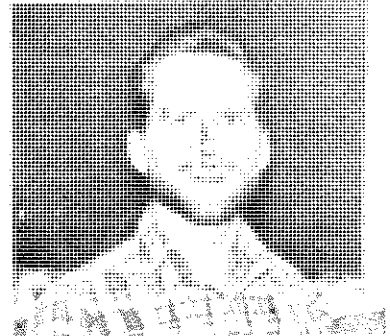
**KEN CORMIER**  
Forest Ecology



**CECILA DARGAN**  
Wildlife



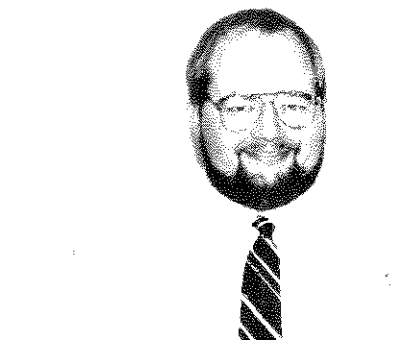
**DALE DEITER**  
Forest Ecology



**CLARENCE DUNBAR**  
Forest Entomology



**MARIA DURAZO**  
MRM\*



**MARK FLYNN**  
MBA/Wood Products



**BRENDA GEESEY**  
Forest Economics



**MIKE GOLDEN**  
Remote Sensing/GIS



**LANCE GRAY**  
MRM  
Multi-resource Management Program



**TOM GROSS**  
Harvest Scheduling  
w/Adjacency Constraints  
- Page 18 -

# GRADUATE STUDENTS



**LISA HAYES**  
Wildlife Biology



**BILL HORSWILL**  
Integrated Resource  
Management



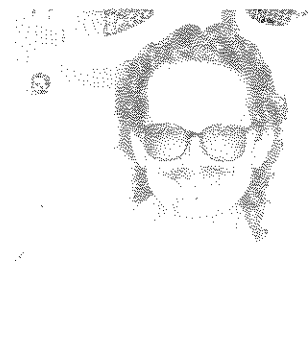
**KATHY KRISKO**  
MRM - Thesis



**CHUNG-YEN LIN**  
MRM



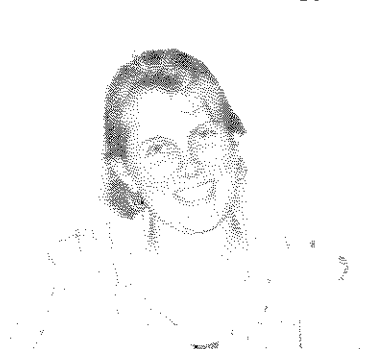
**YIQUN LIN**  
Forest Entomology



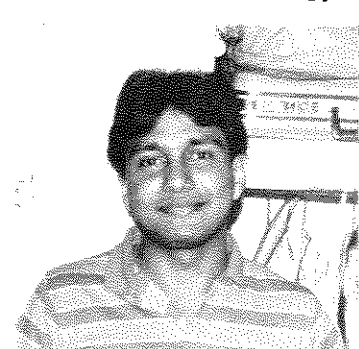
**DAVID LONG**  
Forest Entomology



**LINUS MEYER**  
MRM



**PAM RASKOB**  
Forest Economics



**V. J. REDDY**  
MRM



**DAVE SAMPSON**  
Forest Ecology



**FLOYD SEBALD**  
Forest Ecology  
- Page 19 -

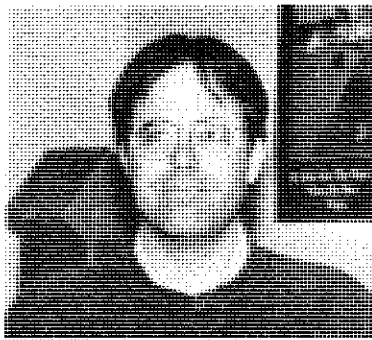


**JOHN SISK**  
Forest Policy

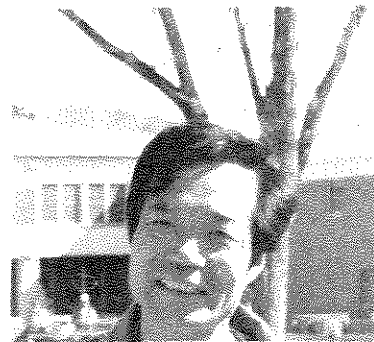
# GRADUATE STUDENTS



**BILL STANSFIELD**  
SI Curves for the  
White Mountains Area



**BOB TISDALE**  
Forest Entomology



**ZHANG ZHAO-YI**  
Forest Entomology

Not Pictured:

**SAM DISWOOD**  
**DAVE FRANTZ**  
**CHERYL MOLLOHAN**

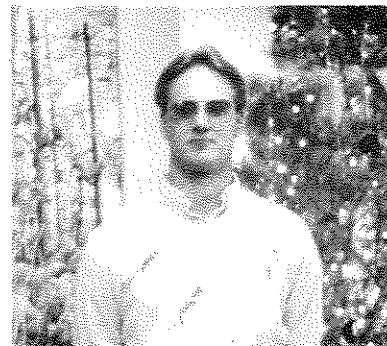
# SENIORS



**JOHN AICHOLZ**  
Tempe, AZ



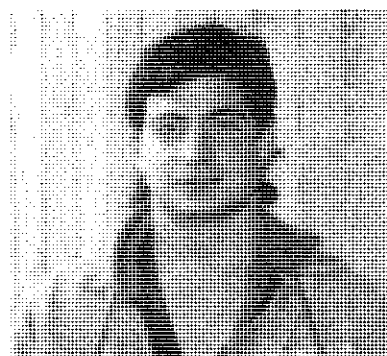
**ALEX BECENTI**  
Tohatch, NM



**PETER BUKOWSKI**  
San Diego, CA



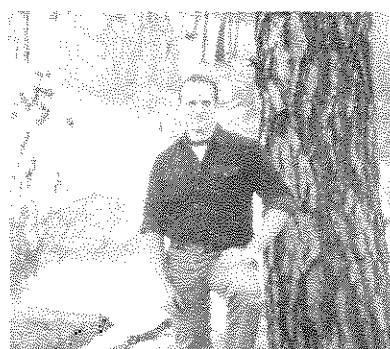
**ROBERT FALQUEZ**  
Flagstaff, AZ



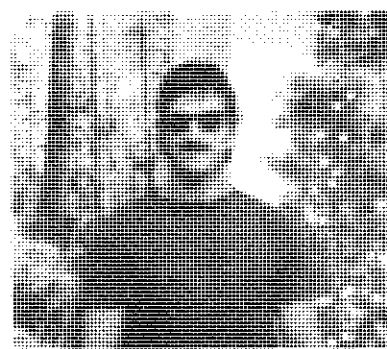
**THOMAS FITZMAURICE**  
Phoenix, AZ



**PRISCILA FRANCO**  
Grand Canyon, AZ



**KEVIN GERICKE**  
Ft. Lauderdale, FL



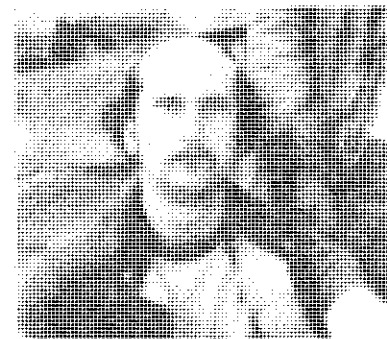
**D. KEN GREENE**  
Tucson, AZ



**DENNY HILL**  
Phoenix, AZ



**EMILY HONNELL**  
Los Alamos, NM



**CARL JENSEN**  
Tarzana, CA  
- Page 21 -



**CHRIS JONES**  
Tempe, AZ

# SENIORS



**JEFF KULON**  
Phoenix, AZ



**ROBERT LACAPA**  
Whiteriver, AZ



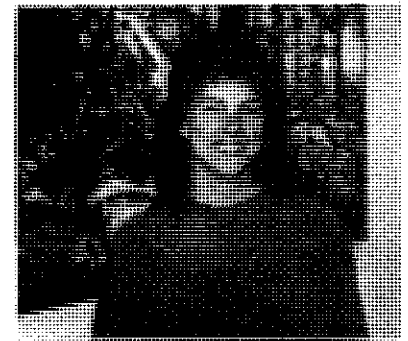
**THOMAS NAVARRO**  
Phoenix, AZ



**JENIFER NELSON**  
Libby, MT



**ROBERT ONG**  
Malaysia



**ANNETTE PINTADO**  
Tucson



**WILLIAM READING**  
Scottsdale, AZ



**ED SAM**  
Window Rock, AZ



**DARWIN SCHULZ**  
Fairbanks, AK  
- Page 22 -

# SENIORS



**SAM SCRANTON**  
Phoenix, AZ



**SCOTT SPLEISS**  
Flagstaff, AZ



**REBECCA WASSON**  
Flagstaff, AZ

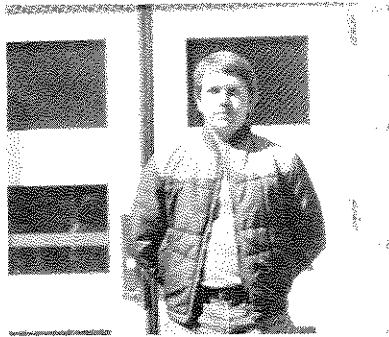


**WILLIAM WHITLOCK**  
Tucson, AZ  
- Page 23 -

# JUNIORS



ORLANDO CARROLL



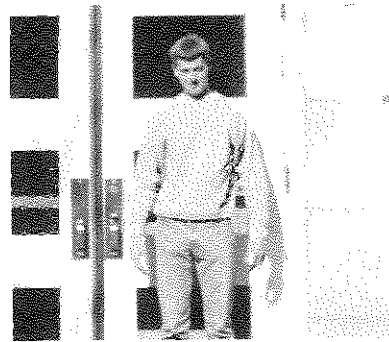
THOMAS CRIDER



WILLIAM CUNNINGHAM



STEVE DEBONIS



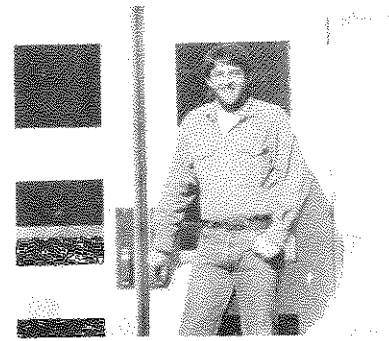
JOSEPH HISS



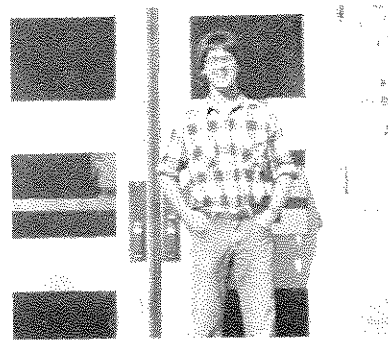
DAVID HUFFMAN



SANDRA JACKETT



TED JAMES



JEFF JENNESS



MATT JIMENEZ



MARK KERRIGAN  
- Page 24 -



MICHAEL MADRID

# JUNIORS



JONATHAN MANYGOATS



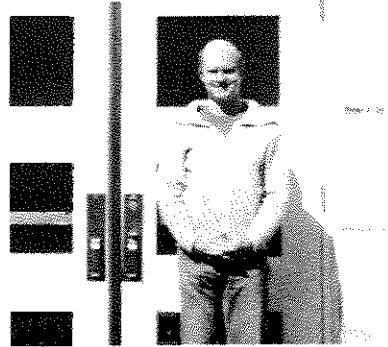
LARRY PHOENIX



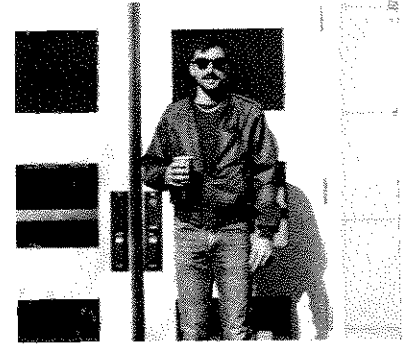
JULIE TIGHE



JEFFREY TIPTON



JERRY WELCH



TEIVA WHITE



BRAD WITKIN

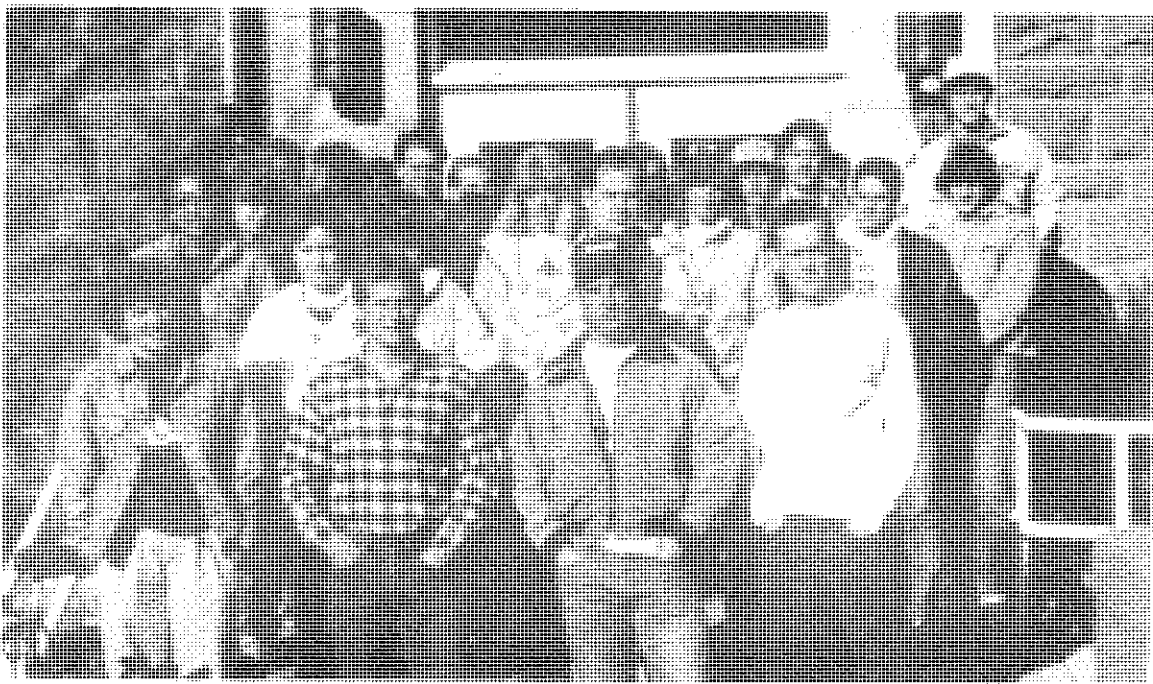


KENSUKE YASUMURA

# SOPHOMORES



# FRESHMEN



# FORESTRY CLUB

## Executive Council '88

### FRONT ROW, L-R:

Joe Hiss - President  
Ted James - Vice President  
Sandra Jackett - Treasurer

### MIDDLE ROW, L-R

Margaret Moore - Faculty Advisor  
Annette Pintado - Senior Representative  
Pam Wagner - Sophomore Representative  
Amy Berger - Sophomore Representative  
Sam Scranton - Social Manager  
Teiva White - Sergeant-At-Arms

### BACK ROW, L-R:

Steve Debonis - Junior Representative  
Rick Hodges - Secretary  
David Huffman - AWFC Representative  
Scott Spleiss - SAF Student Chapter Chairman

### NOT PICTURED:

Leon Ben - Freshman Representative  
Kevin Gericke - Recorder/Historian



**JELD-WEN OF ARIZONA**

Manufacturer of Wood Windows And Doors

829 E. Butler - P.O. Box 1016  
Flagstaff, Arizona 86002  
Telephone (602) 774-0681

**JELD-WEN SUPPORTS NAU FORESTRY**



#### ROCKY MOUNTAIN FOREST AND RANGE EXPERIMENT STATION

In three to five years there will be a change on the NAU campus. This change may not mean much to most of the inhabitants of NAU but it will mean a lot to the students and faculty of the School of Forestry. This change will be the establishment of the Tempe - Rocky Mountain Forest and Range Experiment Station.

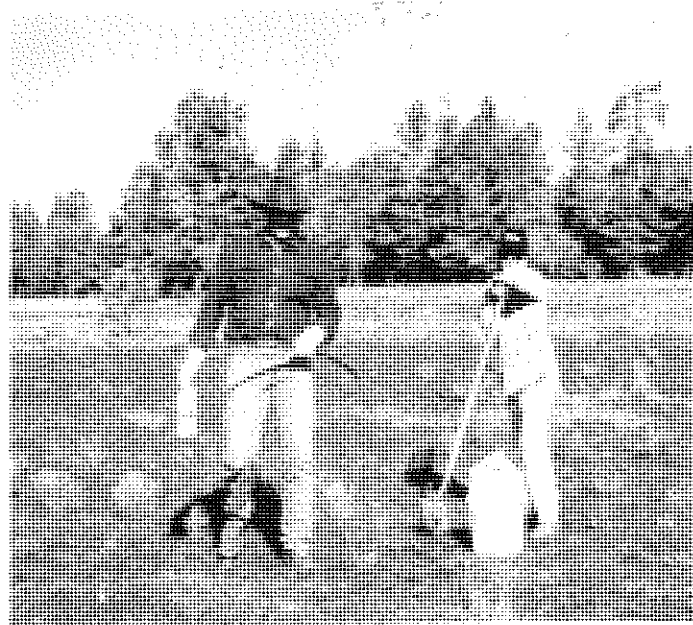
The headquarters of all nine substations of the Rocky Mountain Forest and Range Experiment Station is in Fort Collins, CO. Currently, there is one substation on ASU campus in Tempe while another is on the NAU campus next to the School of Forestry. ASU is in the process of expanding and would like to utilize the land where the Tempe substation currently resides. Since the substations wish to be located on college campuses, NAU asked if they could house the Tempe substation on the NAU campus. The new substation will be built on federal land adjacent to the southern end of the NAU campus. The existing station next to the School of Forestry will be consolidated with the new one on south campus.

This addition to the NAU campus will mean many things to its students and faculty. Graduate students and faculty alike will be able to work closely with the scientists on research. While the move to NAU will not mean additional faculty for the School, the scientists will be given adjunct faculty status and will occasionally lecture to the students. Even though the new lab will most likely not be operational until 1994, it will be well worth the wait for the many benefits it will bring to the NAU School of Forestry.

-Pam Wagner



BE VERY QUIET WE'RE  
HUNTING GOPHERS!



COME OUT, COME OUT WHEREVER  
YOU ARE MR. GOPHER!



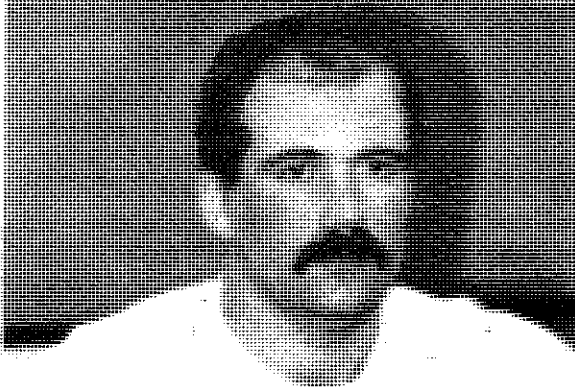
## Breeding Quality Barzonas Since 1961

For a quarter of a century we've been quietly developing one of Arizona's top Barzona herds. Call today for guaranteed, breeding age bulls and females, raised in the rocks and ready to go to work.

# Indian Rock Ranches

David Chase/P.O. Box 728, Flagstaff, Arizona 86002/(602) 774-9115  
Wayne Word, Manager/Bagdad Route, Prescott, Arizona 86301/(602) 442-3297

# Society of American Foresters



## GREETINGS!

I feel fortunate for this opportunity to give this year's update on the state of the Student Chapter of the Society of American Foresters at NAU. Since the Fall semester, better known as "Semester C," we have seen a great deal of change and growing enthusiasm toward the SAF. Many of the monthly meetings held by San Francisco Peaks Chapter have seen outstanding attendance from student members. Our chapter has had the recognition as having one of the top ten SAF member recruiters in 1987. A total of 21 student members have been recruited by Dr. Kurmes, and the number is still growing.

Each month this year, we have invited a guest speaker to discuss his/her area of expertise in the field of resource management. This has brought some additional interest in our club by our own forestry students as well as other students on campus.

Each year, the student chapter is asked to take on the responsibility of organizing a meeting of the Peaks Chapter. This year, we have decided to approach this task a little differently. Instead of soliciting for a guest speaker, we have decided to give the presentation ourselves. The topic of this presentation was "Fire and Fuels Management in Southwestern Ponderosa Pine Forests." My personal wish is that this will set a precedent for future club members to develop their own programs for this annual meeting opportunity.

This year has seen many opportunities for the students to expand their educational horizons into the field of forest management, and we look for continued growth in this area. Thanks to all of those who have helped to make this a great year!!

Respectfully,  
Scott E. Spleiss



## SOUTHWESTERN SOCIETY OF AMERICAN FORESTERS

*Representing Professional Resource Management in the Southwest*

# FIELD DAY FORT TUTHILL



PULL, YOU SISSY! ...

WAIT PETE! LET'S USE  
A CHAIN SAW INSTEAD



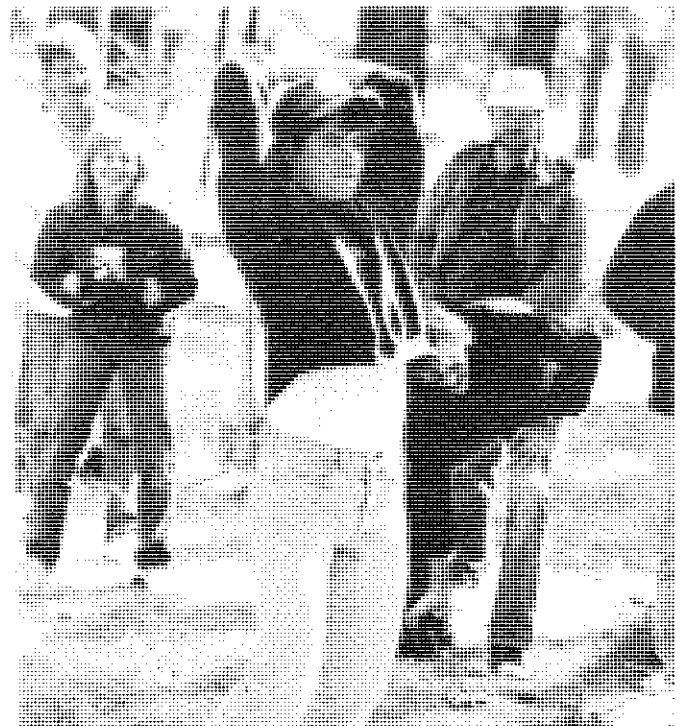
**FLAGSTAFF TRAVEL**

**CHERYL FAULKNER**

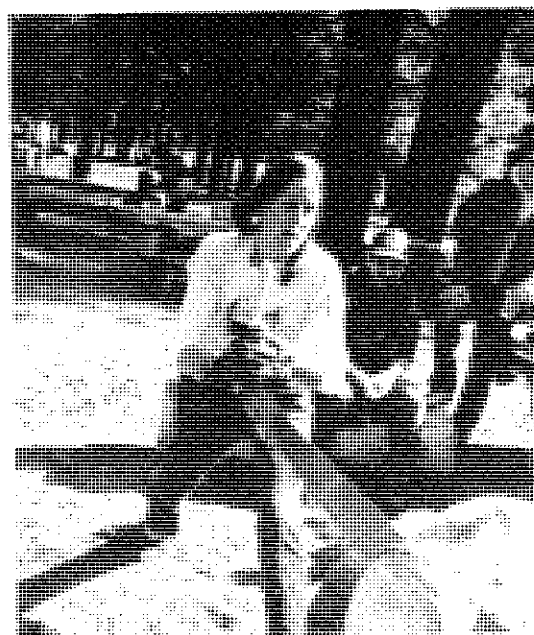
508 North Humphreys Flagstaff, AZ 86001

(602) 774-9104 • (800) 952-9522

An American Express Travel Service Representative



OH, MY BACK



SO, MERT STILL THINK  
I'M A SISSY?



*Major Air*

Printing - Graphics - Bindery - Mailings

774-6888

111 South San Francisco - Flagstaff, AZ 86001

**SERVICES**

**BOOKLETS • LAMINATING • FOLDING**

**COLATING • BUSSINESS FORMS**

**LETTERHEADS • ENVELOPES • CARDS**

**CARBONLESS FORMS • TYPESETTING**

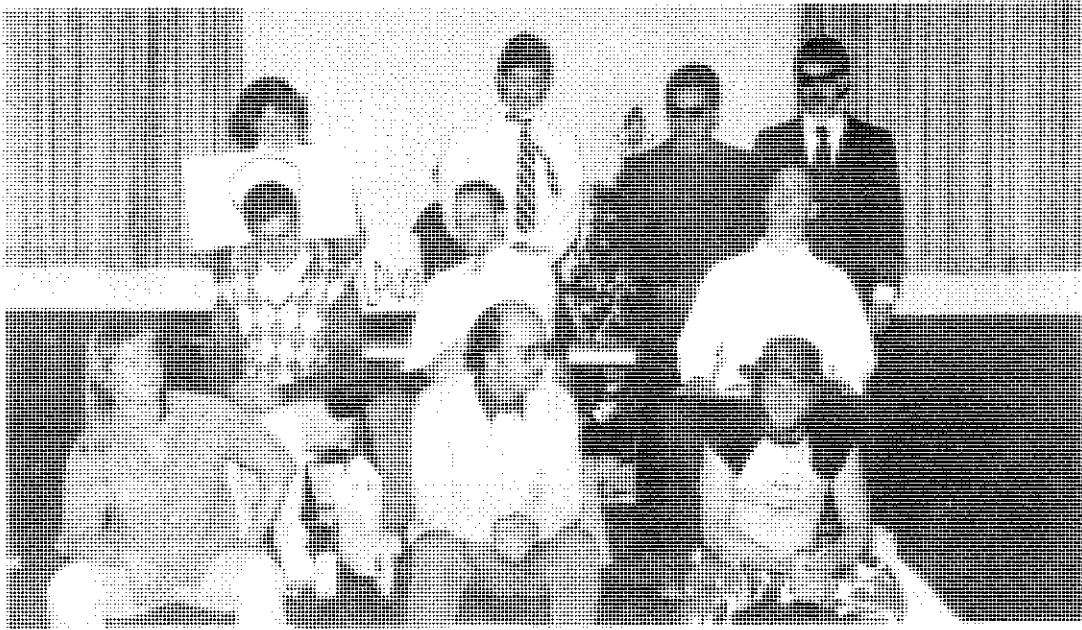
**LAYOUT • DESIGN • GRAPHICS**

774-8888

**NOTHING WITHOUT LABOUR**

# Christmas Party 1987

American Legion



THE FACULTY SQUARES CELEBRITIES: Bottom Row, L-R; Margaret Moore, Bill Groman, David Patton; Middle Row, L-R; Bruce Fox, Merton Richards, Brent Wood; Top Row, L-R; Dick Behan, J.P. McTague, Steve Andarlese, Larry Young



Hmmmm...

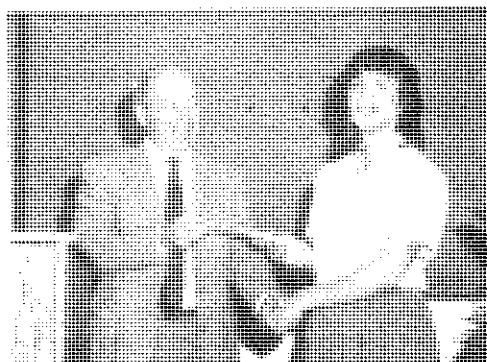
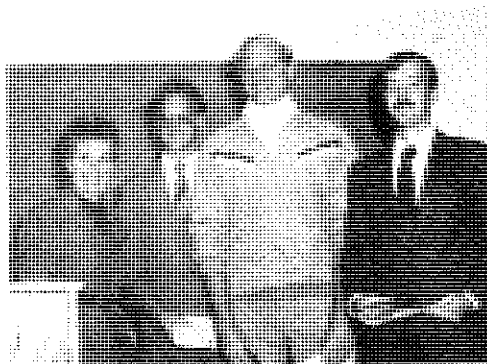
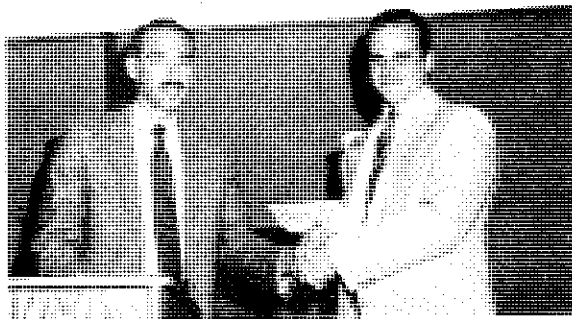


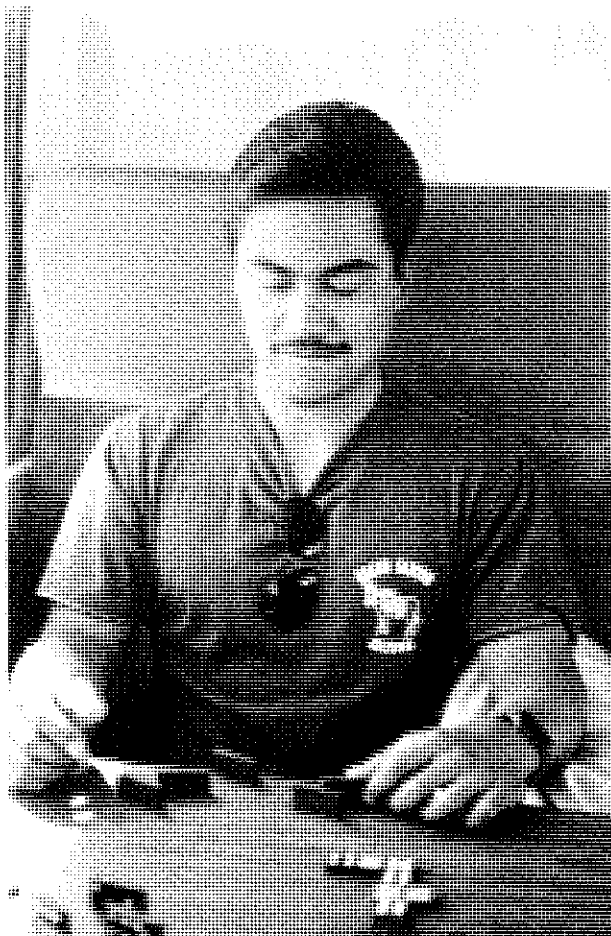
YOU MEAN THE PIZZA'S  
NOT COOKED, EITHER?

# FORESTRY

## HONORS CONVOCATION

Sherrie Alford Forestry Scholarship - JEFF JENNESS  
Alta Vista Garden Club Scholarship - MARK KERRIGAN  
Applequist Award - PRISCILA FRANCO  
Applied Biometrics Labs, Ltd. Scholarship - THOMAS CRIDER  
Laurel and Dorothy Brenn Forestry Scholarship - JEFF KULON  
Tony Czak Memorial Scholarship - SCOTT SPLEISS  
Dave's Lumber Forestry Scholarship - ROBERT LACAPA  
DuBois Foundation Scholarships - PETE BUKOWSKI  
DARWIN SCHULZ  
WILLIAM READING  
Von Dunford Forestry Scholarship — ANNETTE PINTADO  
Empire Southwest Forestry Honor Scholarship - TOM FITZMAURICE  
Forestry Alumni Scholarships - JOHN AICHOLZ  
KENSUKE YASUMURA  
Forestry Club Award - KEVIN GERICKE  
Greenlaw Forestry Scholarships - D. KEN GREENE  
Tommy Knoles Jr. Forestry Scholarship - STEVE DeBONIS  
JEFF TIPTON  
Kaibab Forest Products Company Awards - ROBERT ONG  
DENNY HILL  
Navajo Forest Products Industries Scholarships - ED SAM  
JONATHAN MANYGOATS  
Northern Arizona Loggers Association Scholarship - TED JAMES  
Raymond Foundation Forestry Scholarship - JULIE TIGHE  
Sharalon Runyon Forestry Scholarship - ROBERT FALQUEZ  
Stan Samuels Forestry Scholarship - MICHAEL MADRID  
Stone Container Corporation Forestry Scholarships - CHRIS JONES  
JENNIFER NELSON  
Glen Voorhies Scholarship - KEVIN GERICKE





YES, I'M STUDING LINEAR  
PROGRAMING. CAN'T YOU TELL?



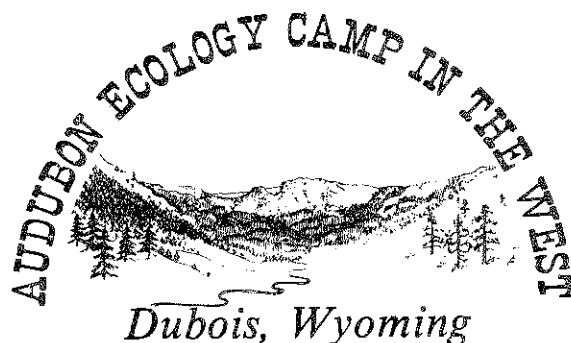
THANKS DR. GARRETT  
CLASS OF 1988

**FINANCIAL ASSISTANCE FOR EDUCATION**  
**Undergraduate College Level**

Inquiries regarding our loan and grant program are invited from students with genuine financial need and serious educational purpose. All inquiries must come directly from applicant.

**B.F. Foundation**  
114 North San Francisco Street, Suite 100  
Flagstaff, Arizona 86001

774-1094



**NATIONAL AUDUBON  
SOCIETY WILDERNESS  
RESEARCH BACKPACK**

Join Audubon biologists in scenic northwest Wyoming (Wind River or Absaroka Mtns.). Learn research skills - bird, mammal, plant and insect survey. Contribute to scientific knowledge and enjoy this magnificent wild country.

4 12-day trips, June - August.

Contact: Registrar, Nat. Audubon Society 613 Dept. B Riversville Rd. Greenwich, Ct. 06831 203-869-2017

SINCE 1981

**L.S.M.F.B.B.Q.**

LONE STAR MEANS FINE BAR-B-QUE

**10% OFF  
ANY DINNER**

WITH THIS COUPON  
Offer expires Feb. 1, 1989

LONE STAR  
BAR-B-QUE

4 SOUTH SAN FRANCISCO ST.  
774-1519

# XI SIGMA PI

## Forestry Honors Fraternity

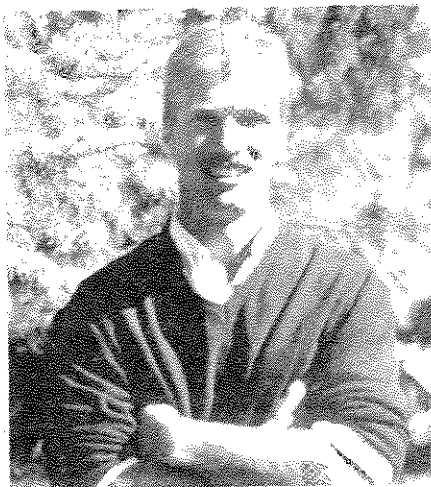
INITIATES — 1987

MARGARET L. ABBOTT  
CHANDRASHEKHAR M. BHOOPAL  
GARRY M. DOMIS  
THOMAS M. FITZMAURICE  
PRISCILA SCHUYLER FRANCO  
DAVID FRANTZ  
BRENDA GEESEY  
KEVIN L. GERICKE  
DENNY A. HILL

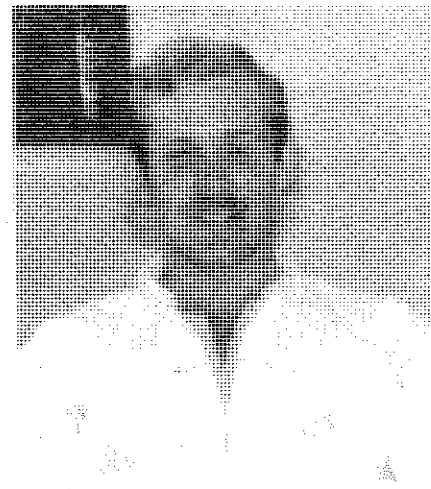
CHRISTOPHER K. JONES  
MARY ANN KELLER  
JEFFREY P. KULON  
JENIFER NELSON  
DAVID A. SAMPSON  
ANDREW J. SCHLOSBERG  
FLOYD G. SEBALD  
ROBERT A. TISDALE



KEVIN GERICKE  
Forester



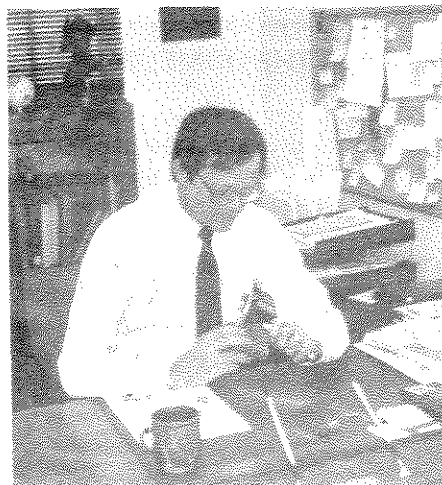
FLOYD G. SEBALD  
Associate Forester



JEFFREY P. KULON  
Secretary/Fiscal Agent



JENIFER NELSON  
Ranger



ROBERT E. LARSON  
Advisor



IT'S KINDA PANICY—LIKE!



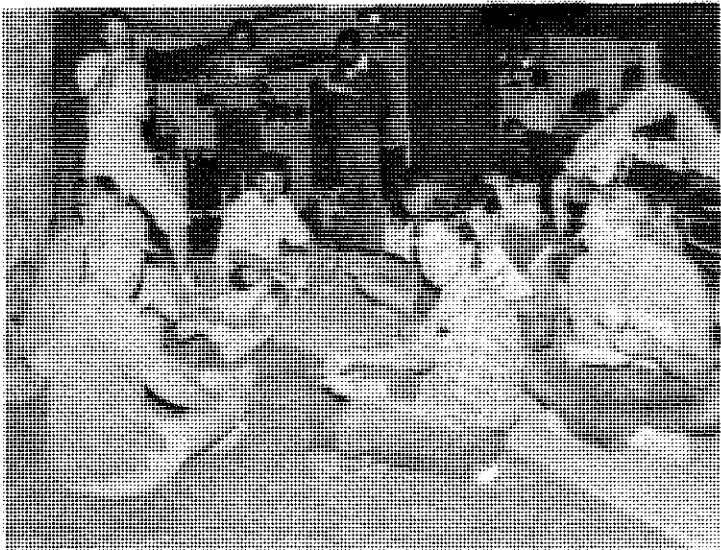
"HOLLYWOOD HERE WE COME!"

Top Row, L-R:

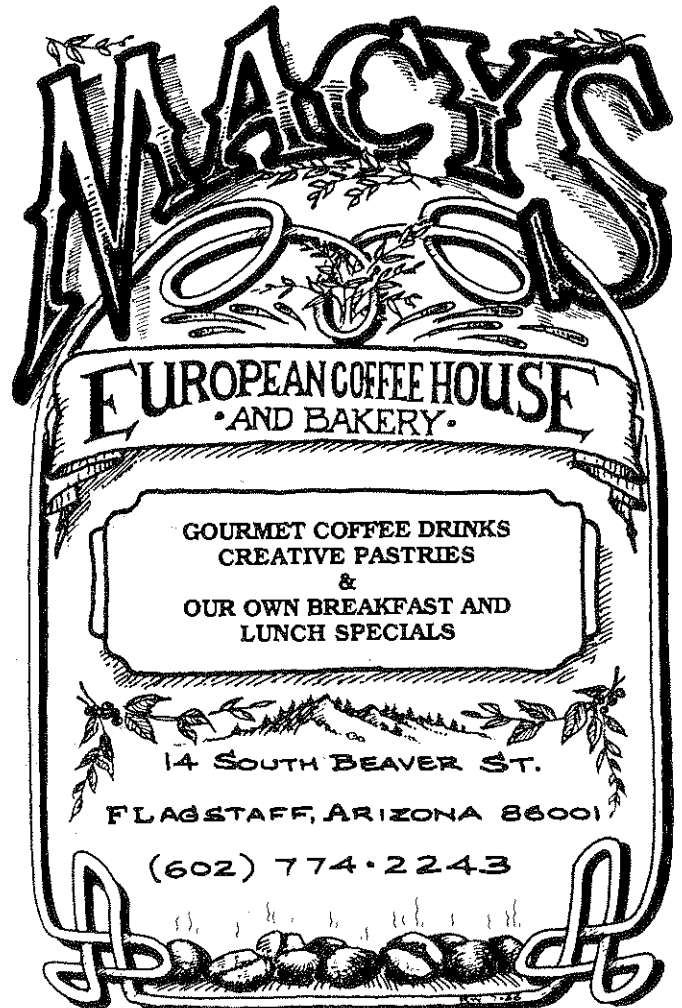
"Cool Hand Kerrigan"  
MARK KERRIGAN  
"Lustful Lucy"  
SANDY JACKETT

Bottom Row, L-R:

"Carl Masters"  
TOM CRIDER  
"Hugh Hefner"  
KEN YASUMURA  
"Don Gill"  
JEFF TIPTON



FLAGSTAFF SHELTER  
FOR THE HOMELESS



I DON'T UNDERSTAND  
... CLEARCUT?!

---

America's largest producer  
of coal...our nation's most  
abundant fuel.

**Peabody**

---

**Peabody**

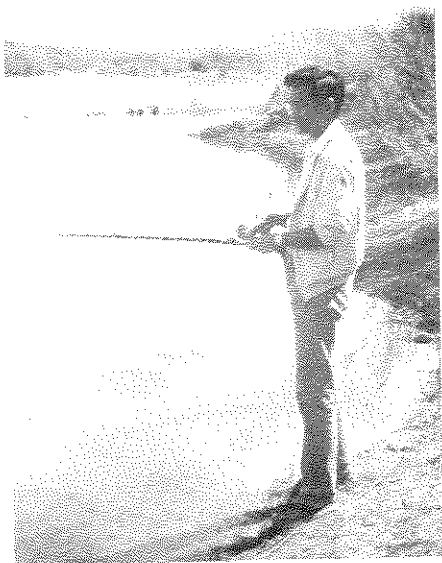
**PEABODY COAL COMPANY  
Western Division**

1300 South Yale  
Flagstaff, Arizona 86001

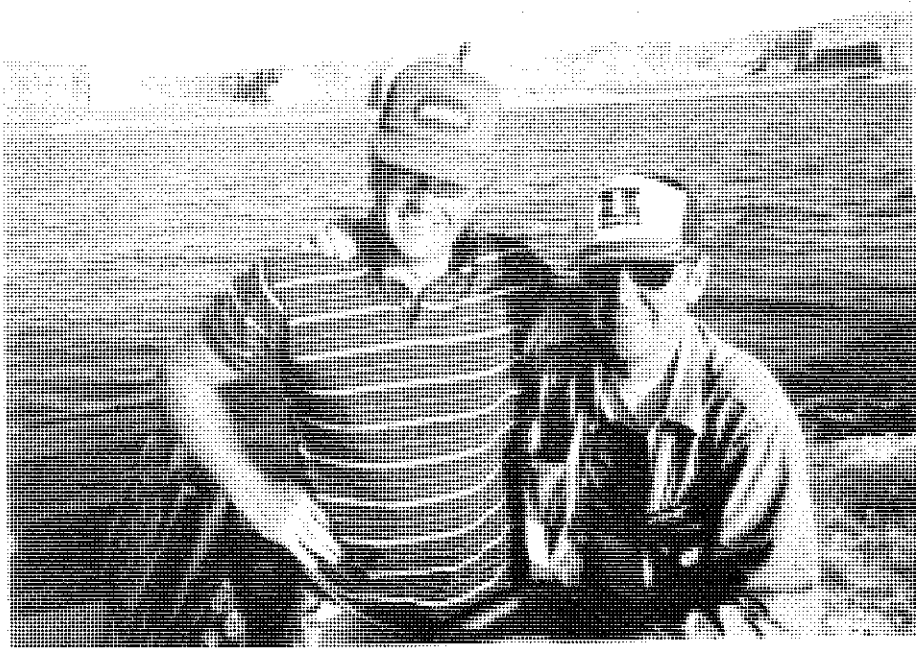


**NORTHERN CRYOGENICS  
&  
WELDING SUPPLY**

Flagstaff	Show Low	Cottonwood
779 4501	537-8388	646-5860
<b>Serving the Logging Industry Since 1970</b>		



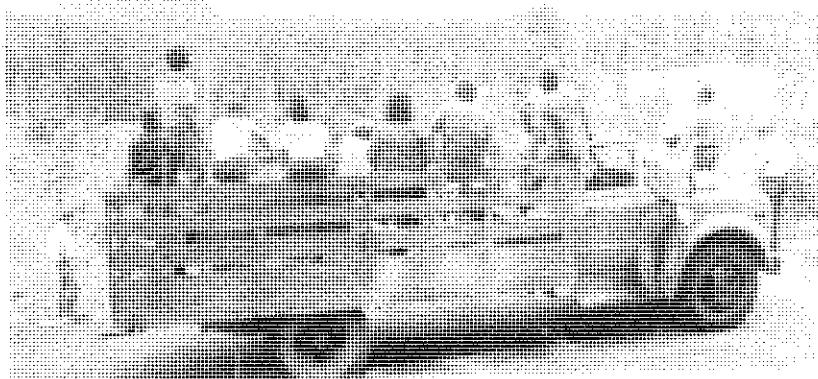
Of Course I'm Using Bait!  
Any Other STUPID Questions?



What Do You Mean We Have Papers To Grade?



Tell Mert We'll  
Go To Class Later



So You Mean We Went  
To CA To See Real Trees?



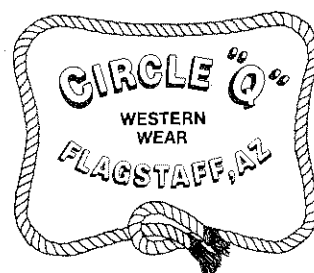
The REALLY Big  
One Got Away!



New & Used

LP's • Cassettes • CD's • 45's  
Posters • Tee Shirts • Buttons  
& More

DISCOVER FLAGSTAFF'S  
LOWEST REGULAR PRICES  
ON LP & TAPES  
● TRADE IN'S WELCOME ●  
BARGAIN HUNTERS DISCOVER  
OUR USED CD SELECTION



**Bob  
and  
Margot  
Childers**

Owners  
1716 East  
Santa Fe  
86001  
(602) 774-4672



BAR & RESTAURANT  
Flagstaff, Arizona  
86001

101 South San Francisco

602/779-1820

- ➡ BEST PIZZA IN FLAGSTAFF (By the Slice Too)
- ➡ HOAGIES & HAMBURGERS
- ➡ GREAT DRINK PRICES
- ➡ LIVE ENTERTAINMENT (No Cover)
- ➡ 4 Color Televisions
- ➡ 4 Pool Tables & Video Games

**FLAGSTAFF'S BEST EATIN'  
N'**

**DRINKIN' ESTABLISHMENT**

SINCE 1973

101 S. SAN FRANCISCO 779-1820

## LUNCH FOR TWO

ANY TWO MENU ITEMS  
FOR  
\$5.50 +TAX

11:30-2:00 Daily

EXPIRES 5/30/83

## SUNDAY MONDAY SPECIAL

TWO LARGE SLICES OF  
PIZZA AND A COKE  
FOR \$1.99

EXPIRES 5/30/83

## BURGER SPECIAL

ANY HAMBURGER,  
FRIES, POTATO SALAD  
OR COLE SLAW FOR  
\$2.99

EXPIRES 5/30/83

## PIZZA SPECIAL

LARGE 16" PIZZA WITH  
TWO (2) ITEMS  
FOR \$8.99

EXPIRES 5/30/83



### FORESTRY POSITIONS OVERSEAS

Foresters are needed in Asia, Africa, the Pacific, South and Central America, and the Caribbean. We train our foresters for overseas work in developing countries threatened by overcutting, slash and burn farming, droughts, and runaway deserts. You will be provided room and board, medical coverage, and a monthly allowance plus \$5000. Call today to start your Forestry Career. New positions open up four times a year. Peace Corps (602) 774-4253 Mail: Peace Corps, Northern Arizona University, Box 4098 Flagstaff, AZ 86011



## SPELLMAN HARDWOODS

OF NORTHERN ARIZONA, INC.

1940 E. BUTLER AVE.

● FLAGSTAFF, ARIZONA 86001

● 779-0317

HARDWOODS ● HARDWOOD PLYWOOD ● HARDWOOD VENEERS  
CABINET GRADE PARTICLE BOARD ● HARDBOARD ● LAMINATES  
CUSTOM OAK MOLDINGS ● KILN DRIED SUGAR PINE ● KILN DRIED DOUG FIR  
LAMINATES ● VINYL BOARD ● CUT STOCK ● MILLWORK



I TOLD MY WIFE  
I'M DOING SCHOOLWORK!



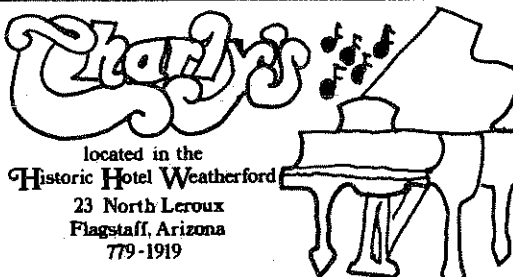
NEXT?!



WILL THE REAL PAUL BUNYAN  
PLEASE CHOP THIS TREE DOWN.



PETE'S FINGER  
IS WHERE?!



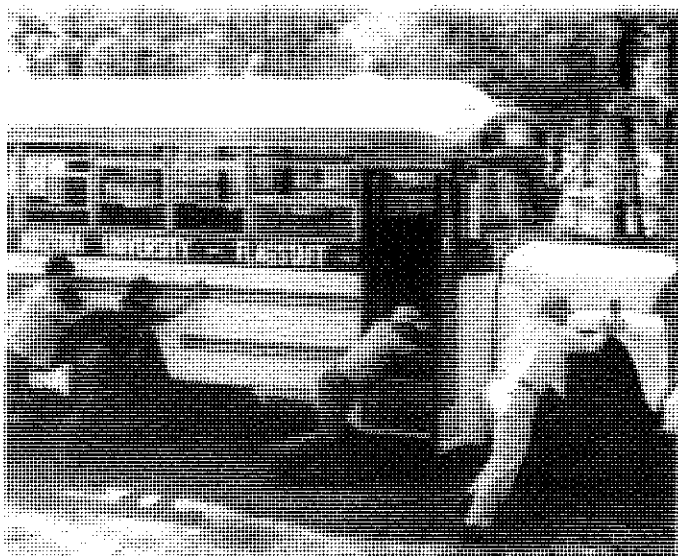
located in the  
**Historic Hotel Weatherford**  
23 North Leroux  
Flagstaff, Arizona  
779-1919



**THE INNER BASIN**

- Cross Country Ski Sales & Rentals
- Hiking and Rock Climbing Equipment
- Mountain Bike Rentals

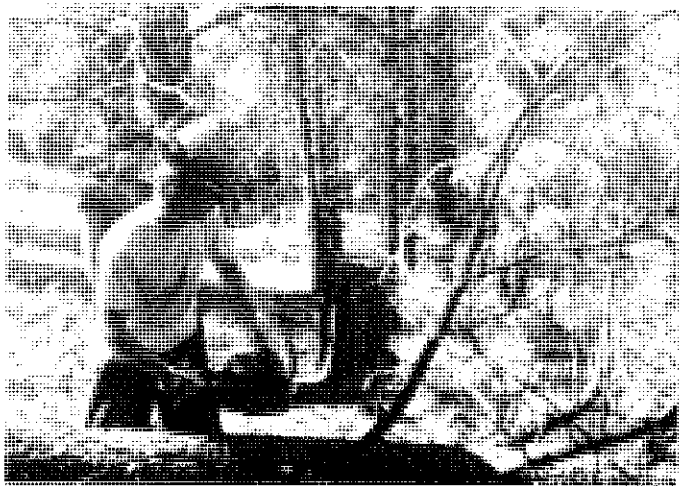
**111B S. San Francisco • Flagstaff, AZ 86001**  
**779-0259**



DOES THIS MEAN WE GET  
AN EXTENSION ON THE PAPER?



OK, GUYS NOW YOU'RE  
PUSHING THE RIGHT WAY!



JEFF! YOU JUST CUT  
THE SITE TREE!



TOLD YOU SO!



AH, WILDERNESS  
AT LAST



I HEARD IT WAS GOIN'  
TO RAIN, MAN!

# ALUMNI

- Fernando Abeita 1971 • PO Box 291; Isleta, NM 87002  
Bureau of Indian Affairs, Albuquerque office.
- Ralph Barela 1971 • PO Box 295; Mora, NM 87732  
Pres., Barela Timber Management Company
- Dave Behrens 1970 • 4120 W. Rose Dr., Phoenix, AZ 85019  
State Lands Dept., Division of Forestry, Fire Control
- Dennis Blerer 1977 • PO Box 238, Bernalillo, NM 87004  
Forester, Bates Lumber Company, Albuquerque
- Kent Bingham 1963 • PO Box 466, South Fork, CO 81154  
Stone Container Corp., In charge of operations  
Married; Two Children
- Dan Binkley 1977 • Dept. of Forest and Wood Sciences,  
CSU; Fort Collins, CO 80523 Professor
- Norm Birtcher 1978 • PO Box 1626, Window Rock, AZ 86515  
Navajo Forest Products Industries, Logging Superintendent  
Married
- Gary Blackwell 1968 • Rt. 7, Box 110-G, Santa Fe, NM 87501  
NM State Forestry, Head of Timber Management  
Married, Two Children
- Elizabeth Blake 1981 • PO Box 1314, Flagstaff AZ 86002  
NAU School of Forestry, research Assistant, Dr. Wagner  
Married, One Child
- Dave Borland 1975 • 3650 Lake Mary Road, Flagstaff, AZ 86001  
AZ State Division of Forestry
- Alvin Brown 1976 • 3351 E. Ascona Way, Flagstaff, AZ 86004  
USFS, Coconino National Forest, Long Valley District  
Silviculturalist
- Dave Brown 1972 • PO Box 2167, Santa Fe, NM 87503  
NM State Forestry, Forest Products Utilization, Forester
- Ken Broyles 1964 • 5107 Seminole Dr., Flagstaff, AZ 86004  
USFS, Coconino National Forest, Assistant, Staff Timber  
Management. Married, One Child
- Ken Butler 1968 • Box 811, Lakeside, AZ 85929  
Fort Apache Tribal Forests, Chief, Fire Control
- Rick Cables 1976 • PO Box 762, Overgaard, AZ 85933  
USFS, Carson National Forest, District Ranger
- Dave Clark 1965 • 1109 Sherwood, Arlington, TX 76013  
Retail Lumber
- Dean Cook 1961 • 4721 W. Cheryl Dr., Glendale, AZ 85302  
Consultant
- George Duda 1968 • 11401 Eaglerock NE, Albuquerque, NM 87111  
Duke City Lumber Company, Married
- Robert Dyson 1975 (MS) • PO Box 374, Alpine, AZ 85920  
USFS A-S National Forest, Recreation & Lands Staff, Married
- Fay Fisk 1979 • PO Box 7548, Phoenix, AZ 85011  
Stone Container Corporation, Public Relations
- Fred Fuchs 1962 • R-6, USFS, Box 3623, Portland, OR 97208  
USFS Region 6, Regional Aviation Officer
- Maureen Gallagher 1976 • 1563 Placit Santa Rita, Rio Rico, AZ 85621  
Past President, NAU Forestry Alumni Association, Married
- Dexter Gill 1963 • PO Box 1827, Gallup, NM 87301  
Tribal Forestry, Forest Manager, Married, Three Children
- Jim Haisley 1980 • 6511 Louis XIV St., New Orleans, LA 70124  
Law Firm
- Mike Hart 1967 • 12659 N. 25th Ave., Phoenix, AZ 85029-2533  
State Lands Department, Director, Forestry Division
- James Himel 1977 • 20 N. Beaumont Ave., Catonsville, MD 21228  
Environmental Consultant
- Cary Huli 1962 • 1232 Zena Lona NE, Albuquerque, NM 87112  
Soil Conservation Service, Chief Forester, Married
- Stacie Harris 1980 • Address Unknown  
Consultant for own Firm
- Sharon Hoover 1981 • PO Box 952, Dolores, CO 81323  
Dames & Moore, Environmental Consultant
- Robert Irvine 1966 • 517 Murphy Dr., Alamosa CO 81101  
Colorado State Forestry, District Forester
- Robert Joslin 1964 • 11 Fairwood Lane, Winchester, KY 40391  
Last Known: USFS, Second Assistant to Director of Timber  
Management, Washington, D.C.
- Fred Larson 1966 • For. Sci. Lab, 201 E 9 Ave #303,  
Anchorage, AK 99501-3620. Researcher, Forest Measurements,  
Forest Lands Lab, Married
- Bruce Main 1977 • PO Box 617, Bieber, CA 96009  
Big Valley Lumber Co., President & General Manager
- Jim Matson 1965 • 1012 E. Laguna Dr., Tempe, AZ 85282  
Kaibab Industries, Vice President, Timber. Married, Two Children
- Ron Partin 1980 • 21510 S. Cloudview, Oregon City, OR 97045-9105  
Last Known: Kaibab Industries, Quality Control and  
Timber Superintendent
- William T. Pawley 1973 • c/o USFS, 324 25 ST., Ogden, UT 84401  
Intermountain Forest & Range Experiment Station
- Stewart Pequignot 1968 • Rt. 1, Topeka, IL 61567  
State of Illinois, Nursery Operator
- Roy Rains 1973 • Address Unknown; Potlatch  
Married
- Don Richard 1963 • 875 E. David Dr., Flagstaff, AZ 86001  
USFS, Kaibab National Forest, Range Staff
- Edward Richards 1969 • Navajo For. Prod. Ind., PO Box 1280,  
Navajo, NM 87328. Navajo Forest Prod. Ind. General Manager
- Keith Runyon 1964 • 603 Clark Cir. SW, Albuquerque, NM 87105  
President of own Lumber Company, Married, Two Children
- Dan Sims 1980 • PO Box 1189, Sedona, AZ 86336  
Own Real Estate Firm
- John Smith 1966 • 909 Warren, Winslow, AZ 86047  
Duke City Lumber Company
- Ken Sowles 1961 • PO Box 18413, Tucson, AZ 85731  
Retired from U of ID, International Consultant
- Eugene Story 1966 • PO Box 300, Dolores, CO 81323  
Retired, Chemical Company, Has Own Sporting Goods Store
- Steve Templin 1979 • PO Box 10, Bentley, LA 71407  
Davis Forestry Consultants, Area Manager, Married
- Charles Thomas (MS) 1974 • 7807 Birch St., New Orleans, LA 70118  
Southern Forest Experiment Station, Married, Two Children
- Wayne Thornton 1976 • 11632 Nambe NE, Albuquerque, NM 87123  
USFS, Cibola National Forest, Married, Two Children
- Gerald Tuskan 1979 • Hort. and Forestry Department  
NDSU, Professor
- Tom Wahlquist 1975 • c/o Hualapai Tribal Forestry, Peach Springs  
AZ 86434. Hualapai Tribal Forestry
- Steve Walker 1978 • Kaibab NF Super Off. 800 S. 6th Street  
Williams, AZ 86046. USFS, Kaibab National Forest, Computer Work  
for Kaibab Forest Plan. Married, Two Children
- John Wehrman 1970 • Rt. 7, Box 47, White Salmon, WA 98672  
Champion International, Area Forester

